

Edited by:
Sylvia Johnson

MG WOOD WORKS

President: Linda Timmons

An introduction to your 2016 executive committee.

Linda Timmons, President. I haven't been very active in the Master Gardener program for the last few years so I don't know most of you very well. I don't even really know the executive committee so I decided for this first "President's Letter" I would do an interview with each of the officers and share something about your elected officers.

When did you take your Master Gardener training?

I took the first Master Gardener training offered in Wood County in 2003. I was an officer for the first 6 years because there weren't very many of us and we all had to do something. I was president in 2006. That was Clint's first full year as agent here in Wood County. That's probably why he calls me "Mom".

Our Vice President is **Melissa Deakins**. This is Melissa's second year as VP. She took her Master Gardener training in 2014.

Take note trainees, next year we may tap you for

an office!

Molly Mathis, our Secretary, took her training in 2013.

Jan Whitlock, this year's Treasurer completed training in 2011. Jan was our 2015 Volunteer of the year.

What did you learn from your Master Gardener training?

The thing I learned that helped me the most was about pH. It doesn't matter what you do to the soil, [\(click here\)](#)

Inside this issue:

| | |
|---|--------|
| President cont. | 2 |
| AgriLife Agent—Landscaping | 3 |
| Commissioner Court Check Presentation | 4 |
| OABG-Stinson House | 5 |
| MNP-Wildscape | 6 |
| What is a Weed? Caruncles | 7 8 |
| Class Schedule 2016 | 10 |
| WCMG Awards | 11 |
| TMG Magazine | 12 |
| Christmas Party | 13 |
| Obituary: Donal Gallier | 17 |
| Work Days/Misc. | 18 |

VP: Melissa Deakins - KICKING OFF THE NEW YEAR

When winter arrives, we gardeners begin dreaming up new ideas for our gardens and start planning for the days of spring. WCMG has some very talented members willing to give us tips for our endeavors.

On **January 21** Kathi Ladewig will share her knowledge of landscape

design with us. In our outdoor environment we are continually challenged to conform to the changes nature brings. Loss of a tree can call for a new sunny garden design instead of that shade garden you had. Kathi to the rescue!

February 18 will be an

interesting investigation "First Detectors". Ellen Atkins, Linda Bradley and Peggy Rogers have just completed a course on detecting diseases in our gardens. They will share this information with us and give us some guidelines on how WCMG can help handle problems in our area.

2016 Slate of Officers

President: Linda Timmons

VP: Melissa Deakins

Treasurer: Molly Mathis

Secretary: Jan Whitlock



President Article Cont.

if the pH is off the plants simply can't absorb nutrients.

Melissa and Molly also thought learning about soil was the event that helped them most in their gardening.

Molly was a big city girl all her adult life and never had a garden, she was like a blank slate, everything helps her with her garden.

Jan added that she has learned a lot from the other trainees and MGs.

What is your gardening style?

I have discovered over the years that I am what is called a plant collector. I used to want to grow every new plant I saw, now I just want to grow everything that will grow happily in East Texas.

Jan loves perennials and enjoys a natural landscape, half sun, half shade.

Melissa is challenged with a shady country yard. She doesn't have a lawn but grows hydrangeas in tubs doing her watering by hand from collected rain water. Melissa is looking for shade loving Texas natives.

Molly loves working in her garden. She grows old fashioned roses and a small vegetable garden. Bell peppers are her favorite vegetable to grow and use.

What is your favorite MG project?

My favorite project since becoming a Master Gardener was the National Earth-kind Rose trial. Wood County hosted one of the first complete national trials. It took contributions from the city of Mineola (the site and mulch), the county (site preparation), businessmen (roses and equipment) and lots of volunteer workers (us). After the trial was completed some of the top roses were kept and the area was turned into a garden. It's called Beverly's garden and it is located about ½ block west of the train depot in Mineola.

Molly's favorite project is the nature preserve. She loves the beauty out there and enjoys working with the other volunteers.

Melissa was very active last year in our spring conference. Her forte is organizing.

Jan's heart is at the Arboretum but she has been involved in most of our current projects.

What would you like to see WCMGA start or improve?

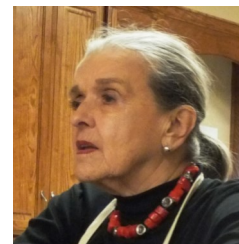
Melissa is concerned with finding something our association can do to raise funds for expanding our educational projects.

Molly would like us to be active in increasing awareness of what we can do to improve our environment.

A priority for Jan and for me is to make WCMGs a more cohesive group. We all enjoy Master Gardening and the many friends we've made. We're looking forward to sharing horticulture knowledge with Master Gardeners and our county in the coming year.



Linda Timmons



Melissa Deakins



Molly Mathias



Jan Whitlock

Photos by: Sylvia Johnson

[Click to return to index](#)

Plan Before Planting

The winter season is an ideal planting time and a good time to take a critical look at your landscape and to make plans for future plantings and improvements.

The wise gardener plans ahead, particularly when it comes to a new shrub and tree selection. Do not put the cart before the horse. Be sure there is a basic landscape need before choosing new plants for the landscape. Choose the best plant available to fit your needs.

A good landscape design is one that achieves a maximum of enrichment or beauty, is useful to your needs and one that you can enjoy. Emphasis is placed upon how well the landscape functions so as to satisfy the need.

In my opinion, the ideal landscape is designed for an individual's need, and it is difficult to say what is a good landscape or what is a poor landscape. What might be an ideal design for one individual might be totally wrong for another. Landscape design is an art that has few rules. Yet, there are definite guidelines for developing and improving a landscape design.

Basic Steps to follow:

Look at your landscape with a critical eye, and observe the existing home site. Take note of the wind and sun direction in relation to the outdoor and indoor living arrangements. Also notice the existing plants, structures, walls, walkways, and natural drainage.

First observe the site to discover your landscape requirements and/or desires. Perhaps the entrance walk is not located properly, or there is a desire for a pleasing view from the kitchen window. The next step is to list all the landscape requirements and needs.

Once you have discovered your requirements for the landscape, select the location that will support the requirements best. For example, the children's play area may best be located to take advantage of an existing tree, yet in view from the kitchen window but somewhat removed from the patio area.

After you have identified a location that best meets your requirements, the next step is to turn these requirements into activity spaces and give them size and shape. Think in terms of outdoor rooms for these activity spaces and give them meaning just as you would in the interior of the home.

The final step in the design process is to select the materials you need for your design implementation: plants, walls, surfacing, etc., which will best satisfy the original requirements, only then will you know the plants and other materials to order to make wise choices. The gardener must consider the ultimate plant size, form, and seasonal interest, growth requirements and the general character of the plant. Will the plant do the job it is intended to do?

(cont. on next page)

County Extension Agent-Ag/NR: Clint Perkins:

Wood County TX
AgriLife Extension Service
618 South Main Street
Quitman, TX 75783-0968
Phone: 903-763-2924

Interested in becoming a Master Gardener and contributing to your county? If so, call the Wood County AgriLife Extension office for more information and to sign.

TEXAS A&M
AGRI LIFE
EXTENSION

AgriLife Agent Clint Perkins cont.:

I like simplicity, others like complicated. Whatever you intend, be sure the plants are doing a specific job and meeting the needs of the intended use of the landscape. Do not over plant and be patient with small plants; they will grow into larger ones with time. Be sure to group like plants together rather than scattering them out. Use lines and masses of the same plant in odd number groups.

Landscape maintenance is to be considered. Plant only what you can properly maintain. Make plant selections in regard to the time and efforts you can give. A well planned landscape will promote outdoor enrichment and enjoyment. Landscapes do not just happen. They must be carefully planned for future enjoyment.

Happy Gardening

If the landscape design meets the requirements, hodgepodge results and “overgrownia” (later) can be avoided. sj

[\(click to return to index\)](#)

Volunteer Hours Count in Wood County by Sylvia Johnson



WCMGs submitted a check to the Wood County Commissioner Court Friday December 4, 2015 for the amount of \$155,160.72!!!! The value of the independent sector for Texas Volunteers is \$24.66 per hour for 2014. That is 6,292 hours that Wood County Master Gardeners volunteered for the benefit of Horticultural Education and Garden Management throughout the county. This ceremony gives credence to the hard work and many hours of labor we provide our county and it's citizens.

Representing the Association were: (L-R) Jenna Nelson, Karen Anderson, Sandra McFall, Petra Jones, Sylvia Johnson,

Linda Timmons and Clint Perkins.

Photo by: Terry Jones

[\(click to return to index\)](#)

INSIDE AND OUTSIDE THE PICKETT FENCE by: Jan Whitlock

QUITMAN ARBORETUM AND BOTANICAL GARDEN

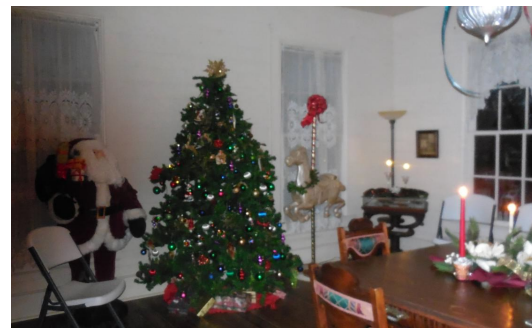
THE OPEN HOUSE AT CHRISTMAS FOUND THE NEIGHBORHOOD WITHOUT ANY POWER, AND THOSE OF US AT THE STINSON HOUSE WERE SCURRYING AROUND LOOKING FOR CANDLES AND MATCHES. THE GUESTS DID NOT MISS THE ELECTRICITY. ALL OF THE FOOD AND BEVERAGES WERE CONSUMED WITH GUSTO AND AN ACCOMPANYING AMOUNT OF ANIMATED CONVERSATION. THE OLD HOUSE BEAMED WITH PRIDE AS IT HAD BEEN DECORATED "TO THE GILLS". A GREAT EVENING WAS HAD BY ALL. IF YOU MISSED THIS PARTY, WE DO HOPE YOU WILL JOIN US FOR THIS CELEBRATION NEXT YEAR.



Stinson House Christmas Invitation

THE ROSE GARDENS HAVE ENJOYED THIS MILD FALL WITH ITS WARM DAYS AND COOL NIGHTS. THE REMAINING GARDENS HAVE SETTLED INTO THEIR WINTER MODE. A FEW BLOOMS HERE AND THERE, AND THE GRADUAL DYING BACK OF SUMMER GROWTH REVEAL THOSE SELECTIONS THAT WERE SUCCESSFUL, THOSE THAT NEED TO BE RE-THOUGHT, THOSE THAT NEED A NEW LOCATION, THOSE THAT WERE A BIG MISTAKE AND THOSE THAT WERE "PROVEN WINNERS". WE DO HOPE THAT YOU WILL JOIN US AS SPRING ARRIVES TO JOIN THE GARDENING SQUAD AS WE READY THE BEDS FOR ANOTHER YEAR OF UNPREDICATBLE TEXAS WEATHER AND MANY GUESTS WITH THEIR CAMERAS.

Stinson Open-House by: Petra Jones



Once again the Stinson House was decorated in its usual glory, lots of Christmas trees and table decorations. It is always a great joy to see the different rooms.

There was an abundance of food put out for all of the visitors to sample. When the lights went out, candles were placed about and they gave the rooms a Christmas flair. Thank goodness the musicians brought their own battery powered lights and could play to entertain the crowds. Thanks to Association member Ann Norris and her group "In Harmony's Way" for providing the uplifting seasonal music.

[\(click to return to index\)](#)

WILDSCAPE EDUCATIONAL GARDENS

The year 2015 was a very strange and challenging year for all gardeners. First it was cold and flooding, then switched to drought thru the summer and then back to flooding for the fall. It made it very hard to schedule work days when it seemed like it was raining every Tuesday, but we were able to squeeze in some days.

Again this year, we used the Rainwater Collection system to demonstrate and inform the trainee classes from Wood County and Van Zandt County. In September the Ag tour made a stop at the Mineola Nature Preserve for lunch and a tour of the “Wildscape” gardens and Rainwater Collection system.

In the spring and again in the fall the rains came and kept coming. Flooding made it difficult keeping the beds in shape and the weeds out. Due to the rains and then the heat, it took most of the summer to get the horse trough planters installed and plants in place under the pergola. In June we were again blessed with some young adults to help at the gardens but of course it rained 2 of the 3 days. However, they really worked hard that one day. Oh to be so young and strong again.

We did apply for a grant to help establish a “Monarch Butterfly Way-Station” in the gardens. There were so many proposals to the grant offer, the funding organization had to reduce the grants. Our \$500 request /proposal was reduced to \$100 actually received, but every little bit helps.

The year of 2016 is going to be a busy one if the rain will give us a break. First on the agenda is “Spring Fling” which will be held on April 23 from 9:00-12:00 at the Pavilion. Our theme is “No Green Thumb Required” and the topics that will be presented by Wood County Master Gardeners are “Lasagna Gardening”, “Sensory Garden plants and design” and “Gardening on Wheels” with guided tours of the “Wildscape Educational Gardens”. So keep this date open on your calendar and come join us for an informative and fun day. You can also receive volunteer hours for any work you do on this project.

We are also replanting the bed under the “Overgrownia” shade tree, re-vamping the “Monarch Butterfly Way-station”, “Sensory Garden” and acquiring more grasses for the “Grass Hill Garden”. If anyone has ideas or suggestions for the garden please let us know (Karen Anderson or Joan Morgan).

Despite all the cold and rain the flowers were beautiful this spring and again in the fall. All the grasses planted the previous year were spectacular and some were over 5 ft. tall. The Princess Caroline Napier grass has now survived through 2 seasons and looks beautiful each year.

In March, the Wood County Master Gardeners lost one of it's long time members, Lucy Germany, “The Edible Weed Lady”. Lucy loved the “Wildscape Gardens” and would have let every weed live out its life at the Preserve. During the “Spring Fling” we will be placing a memorial brick in the “Monarch Butterfly Way-Station” in honor of Lucy.

What is a weed? Nothing? Everything? By: Sylvia Johnson

The definition of a weed varies greatly just read these websites to confirm:

<https://en.wikipedia.org/wiki/Weed>

weed is a plant considered undesirable in a particular situation, "a plant in the wrong place". Examples commonly are plants unwanted in human-controlled settings, such as farm fields, gardens, lawns, and parks. Taxonomically, the term "weed" has no botanical significance, because a plant that is a weed in one context is not a weed when growing in a situation where it is in fact wanted, and where one species of plant is a valuable crop plant, another species in the same genus might be a serious weed, such as a wild bramble growing among cultivated loganberries. Many plants that people widely regard as weeds also are intentionally grown in gardens and other cultivated settings. The term also is applied to any plant

[Ww w.gardeningknowhow.com](http://www.gardeningknowhow.com): Weeds are competitive, fighting your garden plants or lawn grass for water, light, nutrients and space. Most are quick growers and will take over many of the areas in which you find them. While most types of weeds thrive in favorable conditions, native types may be found growing nearly anywhere the ground has been disturbed. In fact, they may even offer clues to your current soil conditions.

<http://www.kitchentablemedicine.com/what-is-a-weed/> June 20, 2008 by Dr. Nicole Sundene

"The only difference between a flower and a weed is judgment." Did you know that some of the "weeds" you are pulling from your garden are actually medicinal herbs? For instance... "weeds" such as stinging nettles, dandelions, red clover, plantain, cleavers, devil's club, stinky Bob, and what not all have medicinal values that can be used after the "weed" is pulled from the garden.

"Love is no hot-house flower, but a wild plant, born of a wet night, born of an hour of sunshine; sprung from wild seed, blown along the road by a wild wind. A wild plant that, when it blooms by chance within the hedge of our gardens, we call a flower; and when it blooms outside we call a weed; but, flower or weed, whose scent and colour are always, wild!"

~John Galsworthy

<http://www.merriam-webster.com/dictionary/weed>

1. *1 a (1)* : a plant that is not valued where it is growing and is usually of vigorous growth; *especially* : one that tends to overgrow or choke out more desirable plants *(2)* : a weedy growth of plants *b* : an aquatic plant; *especially* seaweed.
2. *2 a* : an obnoxious growth, thing, or person *b* : something like a weed in detrimental quality; *especially* : an animal unfit to breed from

The following is a great example of "any plant can be a gem":

<http://agrilifenews.tamu.edu/showstory.php?id=1905>

Dakota Gold: a Texas Superstar 'weed-to-riches' story

Science marries a common roadside weed and produces a 'princess'. By: Robert Burns

So to answer the question "What is a weed?" the answer is plain...Depends!

This article is about plants specifically called weeds.

For the drug commonly called "weed", see cannabis (drug) (Wikipedia)!



Clipart

[\(click to return to index\)](#)

Caruncles & Wattles Oh My! By: Lynn ArronSpeer

So you're going to buy chickens. Chances are you've already picked a breed or two, know what colors their feathers will be and also what colors to expect from their eggs should you be lucky enough to get any. But wait. Do you know how their caruncles will appear? Yes. Caruncles. According to Mirriam Webster, this generally refers to protuberances found on the head and neck including combs, earlobes, and wattles. Apparently their uses vary but are primarily employed in mating and controlling body temperature. These come in all shapes sizes and a couple of colors. For instance, Ayam Cemani and Silkies have black combs.

A rooster's comb may increase slightly in size and brilliance when mating behavior is evident; more blood is being pumped into the area in order to attract hens. The rooster's comb may also appear brighter when warm temperatures increase blood flow to the comb in an attempt to cool the bird

Combs

The fleshy growth atop the bird's head is referred to as the comb and occurs most commonly in chickens, turkeys and pheasants. Currently there are nine recognized combs: buttercup, cushion, pea, rose, single, strawberry, Silkie, 'V' and walnut. As referred to above, the primary function of the comb is to cool the birds through vascular blood flow to both the combs and wattles.

Buttercup: *Sicilian Buttercup*

This comb is a bowl shaped crown, sitting atop the center of the skull and the deep center recess is completely surrounded by points or serrations. This is a rare breed, imported from Sicily as hatching eggs during the 19th Century and accepted into the *American Poultry Association's* Standards of Perfection in 1918.



By AbbyDog 11 Mo. old hen



Cushion Comb: *Chanteclar*

The cushion comb is exclusive to the Chanteclar breed that was developed in Quebec to produce a chicken ideal for egg and meat production in Canada.. The cushion comb begins at the approximate place where the beak meets the skull and extends to the middle of the head.

By RhodeRunner - Partridge Chanteclar - 1 yr.

Pea Comb

Breeds: *Ameraucana, Araucana, Asil, Brahma, Buckeye, Cornish, Cubalaya, Shamo, Sumatra, Yokohama*

The pea comb sits low on the head and is of medium length. It has three ridges running lengthwise with the center ridge being slightly higher and larger than the other two. Both outer ridges have small rounded serrations. By MooMee56 Louie, Brahma - 1 yr. Cockerel



Rose Comb

Breeds: *Ancona, Belgian D'Anver, Dominique, Dorking, Hamburg, Minorca, Rosecomb, Seabright and Wyandotte*

This is a long, broad, nearly flat comb that should have a convex shape to the top and protrude well over the back of the skull. The shape can differ significantly between breeds.

By Mama Hen Chris - Gold Laced Wyandotte - 2.5 yrs. hen



Single Comb

Breeds: Ancona, Andalusian, Australorp, Barnevelder, Belgian D'Uccle, Campine, Catalano, Cochin, Delaware, Dorking, Dutch, Favorelles, Fayoumi, Holland, Java, Jersey Giant, Lakenvelder, Leghorn, New Hampshire, Marans, Minorca, Orpington, Plymouth Rock, Production Red, Rhode Island, Sussex, Turken and Welsummer

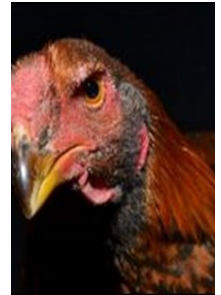
A properly formed comb will extend from the beak past the skull and will contain several serrations that are small in the front and very distinct in the mid-section. An older hen's comb may become floppy but is no indication of a health concern on its own.

By BarnGoddess01 - Jackson, Blue Copper Marans - 6 mos. Cockerel

Strawberry Comb

Breeds: *Malay*

This comb is similar to both the pea comb and the cushion comb but it distinctly sits further forward on the skull than either of those and protrudes over the top of the beak. Additionally, it is wider than either of those two and resembles the hull of a strawberry in texture.



By The Bird-



"V" Comb

Breeds: *Appenzeller, Crevencoeur, Houdan, La Fleche, Polish and Sulta* The prominent "v" is very evident, along with the extreme wattles.

By TexCalkas – Polish – 2 yrs. Cockerel

Walnut Comb

Breeds: *Orloff, Silkie, Yokohama*

The unmistakable walnut shape and lumpy texture is the singular mark of the Walnut Comb whose comb sits far forward over the beak.



By SilkiesForEver - Murphy - Silkie - 7 mos. - Cockerel

Note from the Editor: Just as in gardening and landscaping it pays to do your research before you buy. Sj

[\(click to return to index\)](#)

2016 Training Class Schedule

| 2016 WCMG Intern Class Schedule | | | | |
|---------------------------------|---|--|-------|---------|
| Date | Subject | Speaker | Hours | Chapter |
| 1/5/2016 | Botany, Structure, & Process | Clint Perkins | 3 | 1 |
| 1/12/2016 | Soil 1 | Clint Perkins | 2 | 2 |
| | Reporting of Volunteer Hours | Peggy Rogers | 1 | |
| 1/19/2016 | Soil 2 | Clint Perkins | 1 | 2 |
| | propagation 1 | Katie Cater | 2 | 1 |
| 1/26/2016 | Propagation 2 | Katie Cater | 2.5 | 1 |
| | Project Introductions | Project Leaders | 0.5 | |
| 2/2/2016 | Composting/Vermicomposting/Containers | Holly Ross | 3 | 3 |
| 2/9/2016 | Herb Gardening/ Gardening in Containers | Kathy Ladewig | 1.5 | 6 |
| | Keyhole Gardening/ Square Foot Gardens | Deena Taylor | 1.5 | 6 |
| 2/16/2016 | Vegetable Farming | Lowell Tanksley | 1.5 | 6 |
| | Home Vegetable Gardening | Ellen Atkins | 1.5 | 6 |
| 2/23/2016 | Growing Turf | Clint Perkins | 1 | 8 |
| | Drip Irrigation | John Fox | 2 | 3 |
| 3/1/2016 | Entomolgy | Allen Smith (TFS) | 3 | 4 |
| 3/8/2016 | Intergrated Pest Management | Linda Timmons | 3 | 4 |
| 3/15/2016 | Gowing Fruit & Nuts | Tommy Phillips | 1.5 | 5 |
| | Texas Natives | Liz Soutendijk | 1.5 | 3, 7 |
| 3/22/2016 | Earth-Kind | Peggy Rogers | 2 | 3 |
| | 1st Detector | Peggy Rogers & Linda Bradley | 1 | |
| 3/29/2016 | Tree I.D. | Eric Taylor (TFS) | 1.5 | 7 |
| | Trees for the Urban Environment | Daniel Duncam TFS) | 1.5 | 7 |
| 4/5/2016 | Landscape Design | Linda Timmons | 3 | 7 |
| 4/12/2016 | Rainwater Harvesting | Karen Anderson | 3 | 3 |
| 4/19/2016 | Field Trip | Peggy Rogers | | |
| 4/26/2016 | Graduation | St Dunstans Episcopal Church (Invite Friends & Family) | | |
| | | | | |
| | | Total Hours | | 50 |
| | | | | |
| | | Tuesdays 8:30- 11:30 a.m. | | |

As we know all schedules are subject to change. However, changes will be sent out via E-mail ASAP when they occur. All Associates are encouraged to attend as many classes as possible. Come to update/reinforce your knowledge. Come to see current Associates and to meet possible new Associates. We need to support the instructors, the presenters, each other and the trainees.

See you in class, SJ

[\(click to return to index\)](#)

2016 Wood County Master Gardener Awards by: Clint Perkins

Master Gardener of the Year:
Jan Whitcomb



Innovator of the Year:
Melissa Deakins



Community Outreach Person of the
Year:
Gloria Jean Rosewall



Project Leader of the Year:

Linn Grado

clipart



Rookie of the Year:

Keith Zimmerman



Great job everyone! And a special thanks to those who took the time and effort to vote this year. Recognizing each other is one of the ways we all feel better about ourselves, our organization and our volunteerism. sj

[Click to return to index](#)

Texas Master Gardener Magazine by Karen Anderson

Time sure sneaks up on you when you least expect it. If you have friends or family who like to garden or want to learn more about gardening in Texas, a gift subscription to Texas Gardener Magazine would make a great gift. It is easy and puts a little money in the Wood Co. Master Gardener bank account for educational programs and projects during the year.

Attached is an application for a gift subscription or one for yourself. If for a gift, be sure and include all the information for the recipient and your name for the acknowledgment. It will take a few weeks for the order to be processed but a card will be sent letting your friend or family know they will soon be receiving a wonderful magazine about gardening.

If you have a subscription up for renewal and renew it thru our Master Gardener association, we receive a percentage of the renewals.



Picture from TG website

Do you have an "Oops, I forgot someone" in my Holiday list"? This is a great gift that is meant not to arrive until after New Year! sj

2016 MG Associate's Christmas Party by: Sylvia Johnson

The yearly Christmas Party was held again this year at St. Dunston Church in Mineola. The Rector Rev. Thomas A. Pantle gave a warm Christmas prayer and bid us all welcome to his hall. While the turnout was small (where were you all?) it was a warm and heart lifting affair. The food this year was a smorgasbord of Master Gardener favorites, homemade with love and contained enough variety to fill everyone's plate at least once! Thank You to all who brought those ever popular East Texas staple, the Casserole. The salads were inventive and fresh and added a great counterbalance to the rich casseroles. Thanks to the MGs who brought the Ham and the Pork Roast, they just topped off the meal. Speaking of topping off the meal, the dessert table was once again groaning under the weight of the many sweet and beautiful cakes, cookies, pies and candy. If anyone went home hungry they must have slept through the event. However, I don't think that would have been possible because we had lovely and lively Christmas music provided by MG Associate Ann Norris and her musical group "In Harmony's Way". What a popular local group and what a treat for all attendees. "In Harmony's Way" provided wonderful entertainment for both the MG Associate's Christmas Party and the Stinson House Holiday Party.



"In Harmony's Way"

We met each other while playing in music productions with the Quitman Community Theater. Glenda has her Master's Degree in piano and organ, but saw us playing portable instruments and wanted to get involved. Thus, the ukuleles. A.N.

Once again this year, our special thanks to the MG Associates who arranged our use of the hall and worked so hard setting up/taking down and working the kitchen. We appreciate the hard work and hours you provided on our behalf.



There is so much talent in our Association and it is during the annual Christmas Party we see some of the artistic Associates shine. This year the table center pieces were inventive and cleverly spectacular. Nature provided most of the components and our artistic Associates found inspiration in the landscape around Wood County. Creative and quirky, they were a site to behold. Great job!





One centerpiece came with great toys for boys. Linda Timmons included small gourds that just happened to be shaped just like twirling tops. Twyla's boys could not resist. Hey mom, watching them entertained us too!



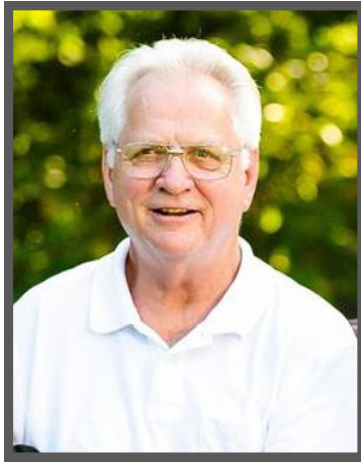
The following are pictures of the party and those who attended. We loved having our friends and families join us in this special occasion. Enjoy...





Clip art

[\(click to return to index\)](#)



Don Lewis Gallier

April 25, 1939—December 16, 2015

A CLOUD OF SADNESS HAS PASSED OVER THE HISTORIC STINSON HOUSE AND THE SURROUNDING GARDENS AS WE MOURN THE LOSS OF DON GALLIER.

THIS TRUE SOUTHERN GENTLEMAN WAS A GRADUATE OF THE MASTER GARDENER CLASS OF 2010 AND WENT ON TO SERVE AS THE VICE PRESIDENT OF THE GROUP FOR ONE YEAR. HIS HEART WAS TRULY IN THE EARTH AND ALL ITS ABOUNDING BEAUTY. THERE WAS NEVER A TASK TOO LARGE OR SMALL FOR DON TO TACKLE, HE FACED EACH PROJECT WITH AN EAGERNESS THAT GAVE THOSE AROUND HIM THE ENERGY TO FORGE ON THRU STIFF KNEES, ARTHRITIC HANDS, ETC.

HIS GENTLE MANNER AND KIND DEMEANOR WILL BE MISSED BY ALL.



Project Leader of the Year:

Lin Grado

Photo by Sylvia

Work Days and Schedules

Wildscape—Tuesdays starting around 8:00. Bring your basic gardening tools. We do have larger tools like shovels, rakes, etc. We will work every Tues. unless there is a chance of severe weather or high percentage of rain.

QA&BG—Wednesdays at 0900. Bring your own gardening tools. Please come and help us maintain our public garden.

Due to winter weather times may change, please call the project leaders for info. All are welcome to come out and help. sj

Online with WCMG

—**Website** at <http://txmq.org/woodcounty> for up-to-the-minute news and scheduled events, back issues of the newsletter and seasonal videos. Any new content for the web-site can be sent to Keith Zimmerman.

—**Facebook**, search for **Wood County Master Gardeners, Inc.** You should find 3 pages to choose from,

- Page 1 is a blank site that has been removed
- Page 2 is Wood County Master Gardeners / Kentucky
- Page 3 Wood County Master Gardeners, Quitman
- Then "like" us!

—**CEU**—ON LINE: <http://txmq.org> -look to side of page, click on Training, click on Training Opportunities, click Earth-Kind Training for Master Gardeners, almost to bottom of page you will find Directions. There are 12 subjects, click

on arrow in front of subject for video then click on survey or test. You are not graded on the test.

—**Sunshine:** If you know of a member who needs a warm thought or sympathy contact **Joyce Hol-loway**

—**Volunteer Hours:** <http://texas.volunteersystem.org> Just click on the link and you will see where to enter your password. Before logging in, right click on the page and save to favorites or bookmark or Create Shortcut to you desktop. Thanks for entering your hours. If you need help contact Peggy Rogers.

Editor—you can find all E-mail address and/or contact information on the Membership Roster sent to you by E-mail or on the Member Roster on the Volunteer Hours Website site above.

Unless otherwise annotated, all photos in this publication were taken by the author of the article in which they appear. SJ Editor

[\(click to return to index\)](#)