

MG Wood Works



November—December 2012

Edited by: Sylvia Johnson



WCMG teach Jr. Master Gardener Classes

for Girl Scout Troops and Jr. High Classes

Table of Contents

Dear Readers, you will find a new exciting way to help you follow the stories in this issue. You will find blue words ([see more info](#)) which are not links to a website but rather are a shortcut (hyperlink) to articles within this issue.

1) When you see “([see more info](#))” roll your curser across the text until it turns into a finger

2) Then Left click

You will be automatically be taken to another page in this issue. Just remember your original page number to return. Try left clicking on a [BLUE](#) chapter name below to go right to that article. I hope this helps you enjoy your newsletter even more!

Sylvia Johnson, Editor

3	President's Corner	
4	VP Corner - Upcoming Meeting	16 Area 4-H Club
5	Agriculture Agent	17 Arboretum and Botanical Garden Quitman
7	Jr. Master Gardeners—Yantis	19 Annual Agriculture Tour
8	Jr. Master gardeners—Girl Scouts	21 Tips & Tricks // Seed Project
9	2013 Intern Class Information	22 Facebook // Schedule of Events
10	WCMG Info Booths	24 Other Garden Assoc. News
11	Texas Native Plants	25 WCMG's History—Part 5
13	Wild Scape—Mineola	27 Project & Committee Chair Listing
15	Public Library Garden—Quitman	



Vision

To be the premier 21st Century outreach and continuing education organization in Texas responding to the needs of the people.

Mission

To improve the lives of people, business and communities across Texas and beyond through high quality, relevant education

President's Corner

ALL ABOARD! Last stops.



What happened? It can't be November already??? It feels like I got onboard the bullet train this year. I'd like to request a transfer to a slow coal train please, so I can enjoy myself instead of watching life whiz by!!

It is hard to believe that we have journeyed into November 15th and December 20th station meetings. Our journey for the 2012 year is almost at the last station. Remarkable!

This means it is coming to the end of the line for your current board of engineers and it has been my pleasure to be the President Engineer on our leadership journey. What a wonderful group this has been to serve with. Without their cooperation, time, creative ideas and good humor this year's journey would not have been as enjoyable a trip. Joan Morgan acted as our great secretary by keeping and recording accurate minutes to preserve our history. Karen Anderson, as treasurer, you have efficiently kept us abreast of expenditures and filed all reports on time. Marti McAree, as V-P, you have done a fabulous job of bringing us speakers. Clint Perkins, our advisor, always there for us, well, you did take a few months out and we so welcome you back with us. To all of you members, you have been a fantastic crew as we have journeyed. Project leaders you have been in there all the way. Committee Chairmen, thank you for your leadership. I am forever grateful for your support and volunteer hours. Whew! Looks like my wish for getting on the coal train won't work. We have been speeding along with all of our activities right up to the year end. Hope each of you have been along with us and enjoyed the ride (year)!!!!

The nominating committee is fast at work procuring officers for 2013. It's not too late to volunteer. Also, Gail Newman is completing the schedule and confirming speakers for the 2013 Trainee Class.

TMGA Awards Program: Texas Master Gardener Association in cooperation with The Texas A&M AgriLife Extension Service and The Texas A&M University System recognizes and presents awards for exemplary achievement in the ten following award categories: Association, Educational Program, Graphic Presentation, Mass Media, Website Education, Newsletter, Project, Publication, Individual Master Gardener and Exhibit/Poster Exhibit Showcase. The Texas Master Gardener Association encourages full participation in the Awards Program. All Certified Texas Master Gardener Associations that are members of the TMGA are eligible to participate if dues were paid by March 01.

Happy Thanksgiving and Merry Christmas! There are not any gardening mistakes, only experiments!

Peggy Rogers

The WCMG Association thanks you for your leadership. It was a pleasure to know ahead of time what would be discussed at meetings, to be kept informed on current activities and receive timely memos during the month. We appreciate the "train being on time" at each stop!

Editor

VP's Corner

By: Marti McAree



November 15:

The November meeting will be fun and busy.

We will have our membership annual plant trade or buy. Bring your extra plants or cuttings to share and enrich your garden with new additions.

We will also share our gardening experiences...the good, bad and the ugly! Think about what you would do differently in your yard, flower and vegetable beds. Mistakes? Great ideas? Tips? Plants that did well during the difficult weather or plants that croaked? Do you have landscaping ideas? Feel free to share photos. You may E-mail your photo to Lin Grado has volunteered to make a Power Point presentation to show during the meeting.

Send photos to: lingrado@gmail.com.

It is also time to elect officers for 2013. If you want to know who has been nominated or to nominate someone contact Nancy Weaver, Mike Ferguson, or Carolyn Fitzgerald.

December 20:

This year's party will be at the AgriLife
Extension office meeting room.

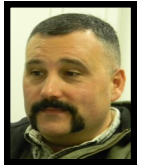
Please consider bringing a snack.

Meeting 9:30 — Regular business meeting.

Association Awards for 2012 will be

Presented by Clint Perkins, AgriLIFE Agent.





By: Clint Perkins, Wood County Agriculture Agent

The Why's and How's of Soil Testing

We get a many phone calls and people stopping by the office to ask questions about their land, crops, animals, etc. Often, these people do not know what questions to ask, or they are not familiar with “ag lingo.” Many want an answer that is very different from the one I give them.

I offer answers based on facts, figures, research, and common sense. One of those ‘common sense’ things is to get the most out of every dollar, stretch that dollar bill as far as you can. One of the tools to milk that dollar is to collect soil samples annually or at least every other year and get an analysis done before you apply fertilizer.

Soil tests are used to estimate the kinds and amounts of soil nutrients available to plants. These tests are used a lot in our county. Properly conducted soil sampling and testing can be cost-effective indicators of the types and amounts of fertilizer and lime needed to improve crop yield.

There are three steps involved in obtaining a soil test:

- 1) obtain soil sample bags with test types, instructions and pricing
- 2) collect composite samples,
- 3) mark/select the proper test, complete the information sheet and mail to the TAMU Soil, Water, and Forage Testing Laboratory at 345 Heep Center, College Station, TX 77843-2474. The contact number for the TAMU lab is (979) 845-4816, their website is <http://soiltesting.tamu.edu>, click on facilities and scroll down to soil laboratory for additional information.

or

Send to the Stephen F. Austin State University Soil Laboratory. SFA's laboratory can be reached at (936) 468-4500 or their website <http://soils.sfasu.edu>.

You can obtain soil sample bags, instructions, and information sheets for mailing samples from the Wood County Extension office. ([see more info](#)) All samples are mailed by you to the laboratory of your choice. Fill the sample bag with soil approximately 1 pint of soil. The goal in obtaining a sample is to collect a composite sample of soils that represent the entire area to be fertilized or limed. This “composite” sample is made from 10 to 15 cores or slices of soil from 15 cores or slices of soil from the sample area. Before you start digging up samples, map out your field to designate where subsamples will be taken. Field areas where there are

(continued on next page)

Soil Sample cont.

differences in slope, soil structure/types, organic matter, past crops, etc. will require several composite samples. The same field markers should be used each time samples are collected from that field to measure changes over time. Factors that can affect results include sampling tools, number of sub samples, depth of sampling, and soil compaction and moisture.

The sampling tool can be anything from a trowel, a spade shovel, to a soil testing tube. The selected tool must be able to cut a slice or core through the desired layer of soil up to a depth of 6 inches. In a field up to 40 plus acres, collect at least ten slices or cores of soil per sample. In a small garden or lawn, four to five cores may be adequate. Because soil types, and sub samples are variable, it is important to obtain a good representation from the entire lawn, garden or field.

Which test do I want to run? There are several different tests that are available and all have a specific use. The routine test determines the soil pH, salinity, nitrates, and levels of primary nutrients available to plants. This test will provide the basic N-P-K fertilizer recommendation for the selected crops. The micronutrient test estimates the levels of zinc, iron, manganese and copper in the soil that are available to plants. This test is conducted for specialty crops, in high pH soils, and to provide general guidelines for troubleshooting deficiencies. The boron test determines the level of water extractable boron in the soil. This test is conducted where clover, or other legumes are grown on sandy soils, are on soils that are irrigated with low quality water. The information form, which can be picked up at our office requests information about soil conditions, acreage sampled, past cropping, fertilization and an estimate of the expected yield. Do not store the samples for a long time after they are collected and then send them in, the results will be altered due to microbial activity.

The instructions for mailing are included with the instruction form. Send the payment for the test with the soil sample. It will normally take about two weeks to obtain results for a routine analysis. If you wait until it is time to fertilize, then take a soil sample and mail it to the lab, do not expect the results back as quickly. Conduct your sampling and testing early in the season to ensure you can make necessary fertilizer and lime applications when you need to instead of when you have to.

Extension programs serve people of all ages regardless of socioeconomic level, race, color, sex, religion, disability or national origin. The Texas A&M University System, U.S. Department of Agriculture, and the County Commissioners Courts of Texas Cooperating.

Wood County TX AgriLife Extension Service

618 South Main Street

Quitman, TX 75783-0968

Phone: 903-763-2924, Fax: 903-763-2092

Wood County Extension Agent

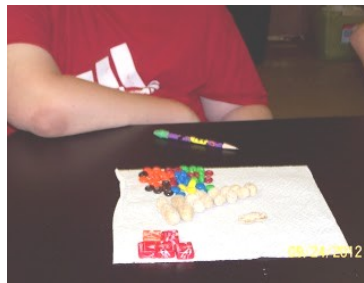
Clint Perkins

Email: ctperkins@ag.tamu.edu

WOOD COUNTY :



This is the 4th year Mrs. Watkins' 7th grade class has hosted the Junior Master Gardener Program in Yantis, TX. The Wood County Master Gardeners meet with the class at least 8 times a semester and do a community project with each class. This year's 1st semester class has fifteen students. We teach plant classification by sub-dividing the students by hair color, eye color, and height. We then have them sub-divide candy into various classifications such as chocolate, vanilla, and fruit flavors. Next they make cornstarch "plant plastic" (think "silly putty") which they use to make a faux plant following special species criteria. They are eager learners and keep us "Master Gardeners" on our toes.



Jr.
M.
G.
M
A
S
C
O
T



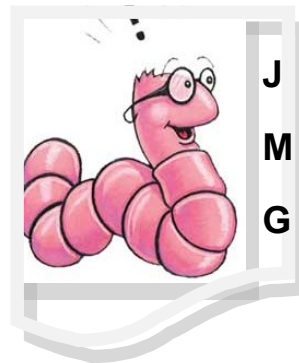
Master Gardner teachers: Connie Amsden, Pat Johnson and myself, Linda Avant





Girl Scout Troops

The Wood County Junior Master Gardeners are teaching Girl Scout Troops as part of our JMG outreach. We are currently involved with Troop #394 and #395 from Quitman, TX. These troops are comprised of Brownies and Jr. Scouts. Crystal Nichols, the leader for both troops, holds troop meetings every other week at the Quitman Arboretum and Botanical Gardens. The girls help weed, plant and do general clean-up of the garden beds. They learn to identify butterflies, plants and tree varieties using the JMG curriculum for younger children. The girls earned the thanks of supporters of the Arboretum and Botanical Garden during the recent plant sale fund raiser ([see more info](#)). They showed their knowledge of plants as well as helped with sales and loading.



It is amazing what they can remember. Working with these Troops helps to ensure that we will have future

Master Gardeners.

2013 Master Gardener Intern Classes

Well, the time has arrived to start thinking about the 2013 Master Gardener Classes. We have 10 prospective students now, which is great, but we need all of you recruiting people for our classes. My Committee and I (Gail Newman) are getting everything organized. I have a great group with me this year. Peggy Rogers, Karen Anderson, Connie Amsden, Lin Grado and Edwin & Lois Boyce have been a great help.

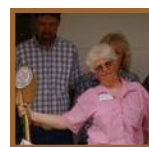
Below is a short description of scheduled classes and who will teach them. I have confirmed teachers for some classes and am in the process of securing teachers for the classes that are still open.

Our "Wonderful Leader", Clint Perkins, has returned home where he belongs. Yeah!!!! He will be teaching the Botany, Structure Process and Soil classes again. We will be sending in soil samples to TAMU for all Interns. Clint will use results from these samples to explain his subjects. Anyone in the WCMGA is welcome to send a soil sample. You will have to pay for the soil sample but the association will cover the mailing. Samples must be turned in by the 1st class (1-8-13) and will be mailed that afternoon. Clyde & Fran McKinney (MG Propagation Specialists) will teach a 5 hour class & will include hands-on training (time and date to be announced).

The current schedule is;

- 1) Peggy Rogers is teaching the basic EarthKind program from the beginning, the changes and the future of the program,
- 2) Vegetable Garden (teacher not confirmed yet),
- 3) Home Vegetable Garden (Andrea Hawk),
- 4) Basic Bulb (Lin Grado),
- 5) Southern Bulbs (Chris Wiesenger) "The Bulb Hunter" Chris will also be bring some of his books for anyone who wishes to purchase,
- 6) Trees: Hoping to have Eric Taylor and Daniel Duncum. Daniel has confirmed. This year he will be able to hold a hands on pruning demo for us at the Quitman Arboretum,
- 7) Landscape Design,
- 8) Herbs for East Texas (Lee Ann Martin). She owns Bittersweet Herb Farm here in Wood county,
- 9) Entomology (Alan Smith),
- 10) IPM, Pest & Disease with Good Bug/Bad Bug information. (Linda Timmons),
- 11) Turf Grass & Other Choices (Ellen Atkins),
- 12) Bees,
- 13) Fruit and Nuts (Innis Freeman),
- 14) Peaches (Galen Logan),
- 15) Composting and Gardening in Containers (Holly Ross),
- 16) Wildscape/Natives (Liz Soutendjik),
- 17) Edible Wild Plants (Lucy Germany).

This list is to provide you some information to give prospective students and a heads-up for those WCMGs who are interested in joining us to acquire Continued Education Units (CEUs). Orientation class will be held early December. Exact date will be sent by E-mail to all WCMG. Looking forward to a great year, Gail Newman



WCMG Informational Booths



Every weekend from September until November you can find the WCMG manning a booth at Wood County Fairs and Farmers Markets. We provide resource handouts, seed packets, information on our current Projects as well as information on how to become a Master Gardener. We recruit many new members by being in the public eye and answering questions and providing handouts. We also sale our Tip Book for purchase which helps us with the cost of booth supplies. This year you could find us at :

- ⇒ **Winnsboro Farmer Market each weekend in October**
- ⇒ **Winnsboro Expo**
- ⇒ **Golden Sweet Potato Festival**
- ⇒ **Hawkins Oil Days Festival**
- ⇒ **Alba Street Festival**
- ⇒ **County Chili Cook-Off**
- ⇒ **Mineola Spring Conference**
- ⇒ **And many more throughout the year**

We have several sets of informational materials that allow us to attend and educate at multiple events per week.
[\(see more info\)](#)



Featured Plant: **Texas Native Plants**

The richness of native plant variety along East Texas Roads.

Here are some places to find large areas of native plants blooming along roadsides or in pastures. So many people never look out their car windows and thus don't have a clue as to what is out there for their enjoyment. It's a free show and we should take advantage of it. I'm going to make the list into a "card handout" to give people at the Oil Festival and Winnsboro Farmer's Market.

--When and Where to Look--

Sand Verbena: A low-growing plant which can be seen along most of our major roads throughout the summer and on into early fall. It has a long bloom season—purple flowers stand out against the frequently mowed road shoulders.

Snake Cotton: Blooming—if you can call it that—at the end of summer (September) and early fall. Tall, rangy plants studded with tufts of what looks like cotton. You can spot them in pastures and along roadsides.

Bitterweed: Check out the connecting road (778) between Hainesville and Loop 564 in Mineola. On the left hand side Bitterweed has turned vast areas of pasture into a cloth of gold. Earlier, Bitterweed brightens the margins of Highway 80 between Hawkins and Mineola.

Maximilian Sunflower: No specific vistas but this flower can be spotted in small but profuse areas along most of the major roads in the area. It is tall, usually bent over, heavy with large yellow flowers.

Texas Prickly Poppy: Tall white, particularly noteworthy along a brief portion of Highway 49 just as you cross Loop 154 east.

Missouri Primrose: A striking low growing but bushy plant along FM 2869 from Highway 14 over to FM 49. Large yellow blooms.

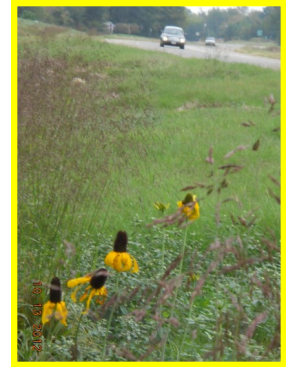
Coreopsis: There once was a whole sea of blooming coreopsis along Highway 80 between Highway 14 and on into Mineola but they were either mowed once too often or they have just decided to move elsewhere (plants do that). Watch for them anyway in their old stomping ground along 80 because they could come back. Small roundish yellow blooms with dark centers.



(continued on next page)

Native Plants cont.

Giant Coneflower: An early spring bloomer along Highway 14 between Pine Mills and Highway 154 as well as along Highway 154 all the way into Quitman. Very tall with large yellow flowers



Henbit: This is one of the earliest spring blooming plants with compact purple blooms. Look for entire pastures to be covered. If you see purple fields or purple coated roadsides, and it's early spring, it's henbit.

Daffodils: A spectacular patch of these lies along FM 14 between Pine Mills and 154. It is on the left only—as you go north. Yellow, small but thickly sown plants cover a wide swath of the road shoulder. Early spring. At this time also you should check out Mrs. Lee's Gardens just south of Gladewater. There is a sign on the Highway going south. Really worth seeing.

Other plants to watch for in spring and on into summer:

- Old Plainsman (a sturdy well-branched plant with soft wooly purplish blooms. On open plains and pastures.
- Prickly Pear Cactus: in clumps in open pastures and along roadways. Large open bright yellow blooms.

Keep a record of what you see in large, showy quantities along area roads and let us know so we can maintain a list from year to year. East Texas flowering plants are truly spectacular.

Contact: Lucy Germany, Master Gardener, lgermany@etex.net (e-mail)

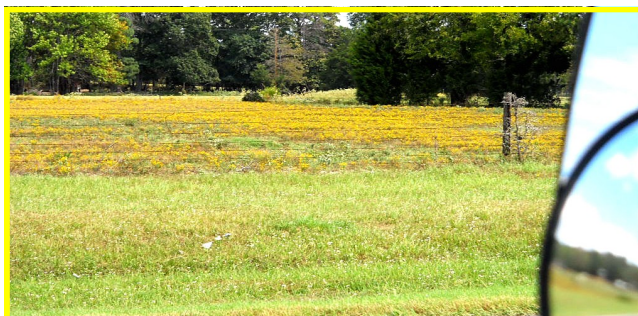
You can find pictures of the flowers mentioned in this article at the

Lady Bird Johnson Wildflowercenter website:

<http://www.wildflower.org/>

For example:

http://www.wildflower.org/plants/result.php?id_plant=FRGR3 == *Snake Cotton Flower*



Article by: Lucy Germany

Photos by: Sylvia



Wildscape Garden

at the



We are definitely into Fall with changing temperatures with each day. We so welcome with cooler temperatures. It is just amazing to see the flowers in bloom at this time of the year, as you expect only leaves changing colors to provide our color in the fall.

Please note the photos of color/flowers and gorgeous butterfly which were taken by Karen Anderson earlier this week at the Wildscape at the Mineola Nature Preserve. Karen planted and is maintaining the bed showing the common mullein plant as well as Esperanza in the background.



We have been very busy at the Wildscape preparing the Wildflower Bed for planting seeds and doing basic cleanup of other beds. The rain has generated re-growth of plants that are usually finished by this time of the year, some are welcome and some not so welcome. Come out and help us prepare for winter and earn those last few volunteer hours for 2012.

Last Friday we had a meeting at the Preserve's Pavilion to discuss our future plans and enjoyed the nice weather at the same time.

Jim Willis reported that David with Wilhite Landscaping will hold two Continuing Education Classes (CEUs) in the coming months to demonstrate the installation of our drip watering system at the Wildscape. He has invited another landscape person to join us and jointly they will handle the education of our volunteers. The date and time to be determined once they have the additional materials needed to make the installation. We will provide you with more information once we have the details.

(continued on next page)

Wildscape Garden cont.

Jim has installed the signs for each plant bed, as featured in the last issue of “MG Wood Works”. We are pleased with the signs’ design, featuring Jim’s photos, and the educational information which is now available to visitors at our Wildscape Garden at the Preserve. He will be installing the individual plant signs, like the one below, in the near future. We anticipate they will help generate even more interest in our landscaping, hardscaping, EarthKind measures and our Wood County Master Gardeners Educational Programs.



Photo and sign by: Jim Willis

Karen Anderson suggested that as a fund raiser, we decorate 50 gallon rainwater barrels by painting butterflies, plants, etc. on them. We would like to sell them by raffle at one of our WCMG educational events in 2013. This would further our efforts to educate the public about our “Rain Water Harvesting Programs” taught by our Certified Master Gardeners. Thanks to Peggy for volunteering to take on the task of designing and painting the barrels. What talent we have among our volunteers.

Fall is a nice time of the year to visit our area with the cooler temperatures but still lots of warm sunshine, so come out and enjoy our Wildscape Beds as well as the colorful views of the Preserve.



Article by: Joan Morgan



Quitman Public Library Garden

TEXAS SAGE SHRUBS

Botanical name: *Leucophyllum frutescens*

Hardiness zone: 7-9

Light requirements: Full Sun

Water usage: Low

Soil: Well-drained

Height: 5' - 8' – average

Width: 5' - 6' average

Blooms: June and Sept

Deciduous / Evergreen

Texas Native

Wildlife and Butterflies love this plant

Texas Sage is found throughout in the southern United States and is native to Texas. It is also commonly known as "Cenizo, Texas Sage, Texas Ranger, Texas Rain Sage, Texas Silverleaf, Ash-bush, and Wild Lilac. It requires very little care. Shade will stunt the growth of the shrub and prevents the bush from blooming. They like alkaline soil and in home planting they will do very well in raised beds. The hotter the weather the better they thrive. Texas Sage will go dormant in the winter. They will take moderate cold weather but you could lose them to extended hard frosts and freezes.

Texas Sage has silvery leaves and lavender bell shape flowers that bloom two times a year usually in June and Sept. Watering the Texas Sage bush is not recommended, since over watering will cause your plant to die. **"Pay Attention", don't water your plant unless you have a draught for months!**

While I was doing research on the Texas Sage, I came across the reference to something my Granny called, "That pretty purple flowery weather plant that could tell you when it was going to rain". Now, how in the world could she have known such a thing? Well, let me tell you what I found about this pretty shrub. It has a nickname, "The Barometer Plant". When the humidity is high enough to start raining, these gorgeous little purple buds will burst wide open and show their beauty in masses. Now that has to be God at work! My dear Granny did it again; she knew one more folklore fact about plants. I wish I could have picked her brain before she headed for that Great Garden in The Sky.



Un-pruned Texas Sage

(continued on next page)

Sage is used in landscaping in towns and cities in the southwest where outdoor watering is kept to a minimum. You will see a fine example of Texas Sage in the landscape at the WPL on the west side of the building. “To prune or not to prune” that is the question. I like the natural look, since it is a bushy plant which gives Texas part of its desert charm. If you are the type which has to prune and have your Texas Sage looking all dressed up, light pruning produces a fuller bush and you can determine its shape. Prune in late winter or in spring before the buds start to form.

P.S. Please.... *No fertilizers* on THE TEXAS SAGE SHRUB

Pruned Texas Sage



Article by: Linda Cowan
Photos by: Sylvia



District 5 4-H and Youth Development

Area 4-H Club members participated in the 2012 Agriculture Tour and brought fresh and interesting questions during the day's events. Their help with the lunch clean-up was appreciated. WCMG are looking forward to having a continuing interface with the future Farmers, Gardeners, and Ranchers.

Per the County Extension Agent (Agriculture), Clint Perkins, “These Tour stops are just a sample of the many diverse agriculture and natural resource commodities that Wood County has to offer it's residents and visitors”.

We thank the Wood County Industrial Commission, Wood County Extension Office and the Leadership Advisory Board for sponsoring this year's tour. If you did not join us this year, be sure to look for next year's tour announcement in the local media.

[\(See more info\)](#)

Quitman Arboretum and Botanical Gardens

This is the time of year when the Stinson House and The Quitman Arboretum and Botanical Garden really show their adaptability. The Wood County Master Gardeners, in conjunction with the Friends of the Stinson House, The Friends of the Arboretum, and the City of Quitman, will be hosting many events during the next three months. Volunteers are needed to help make this season special. Please see next page for upcoming events.



October 13: Did you attend the plant sale and **Scarecrow** contest? Money was raised to help with the Stinson House roof and porch repairs.



The scarecrows were a big hit as you can tell by these fun photos:



(continued on next page)

Upcoming Events at Arboretum

OCTOBER 27: Quitman City Community Day of Service. All Master Gardeners are encouraged to assist the Friends of the Arboretum supervise local volunteer groups as they help with putting the plant beds, the Trail in the Woods, and the Stinson House yard to sleep for the winter. Drinking water will be plentiful and lunch will be served to volunteers. Bring gloves, basic gardening tools, and mosquito repellent. Wear long pants and long sleeves.

NOVEMBER 12-16 : Let's all turn out to help decorate the Stinson House and the Arboretum. We will be decorating every day this week inside and outside. This is a great time to put your creativeness to use. All decorations will be provided. What better way to get into Christmas spirit!

DECEMBER 13: Quitman Chamber of Commerce Open House 5:30 -7:00: This year's event will feature catered food, live "Old Time Country" music, and an auction. Volunteers will be needed for set-up, service, and, of course, clean-up. Items that are needed for the auction are Homemade Holiday themed crafts and special Holiday foods. Each donated item needs to be gift wrapped. Clear cellophane wrapping, with a pretty bow, will make your donation a great visible "gift" on which the attendees can bid. Proceeds go for the upkeep of the house and grounds. Help us show the Wood County Businesses what their donations are accomplishing for their community and their county.

DECEMBER 15 & 16: General Public Open House. Volunteers are needed these two days to answer questions and help educate the community about Master Gardeners' work at the Stinson House and in the Arboretum and Botanical Gardens. This is a great opportunity to educate Wood County residents on Master Gardeners programs in general and to recruit new members.

To learn more or volunteer please contact: Pam Riley at (903) 466-4327 or visit the Quitman Arboretum website: www.quitmanarboretum.com

By: Sylvia with input by Pam, Linda and Lynnette

Photos by: Sylvia



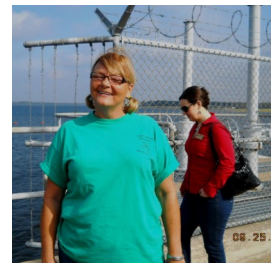
Master Gardeners and Friends of
the Arboretum

2012 Wood County Agriculture Tour

WCMG were well represented on this year's Annual Wood County Tour of Agriculture on September 25th. We visited the Sabine River Authority (SBA), Quitman, TX where we toured the dam and laboratory after seeing an educational film on the mission and accomplishments of the Authority. As Master Gardeners (MG) we were reminded of our duty to the run off area in which we live and grow our gardens. For information on the Lake Fork Reservoir and the SBA visit: www.sra.dst.tx.us



Viewing the
Sabine River Dam
Quitman, TX



LUNCH AT JIM HOGG CITY PARK, QUITMAN TX

Lunch was provided by the Wood County Electric Cooperative. The Friends of the Arboretum and MGs served BBQ.



During and after lunch MG were available to answer the tourist's questions about the Stinson House and the Quitman Arboretum and Botanical Gardens which are located at the park.

AgriLIFE Tour cont.

Next stop on the tour was the Douglasville Timber Company where we learned how the company, which started in July 2012, takes harvested Wood County trees and makes them into Rail Road Ties and pallets for shipping. It was fascinating to see how quickly they processed an oak tree into ties in no more than five minutes per tree. It was explained that this will be a sustainable enterprise and process due to the rate of growth and number of hardwood trees in East Texas.

The third and final stop for the day was at the 5-G Poultry Farm, Winnsboro, TX. Here we learned from the owner and a Pilgrim Company representative how chickens lay fertilized eggs and how the eggs are then processed. The tour explained there are many steps taken to ensure the safety and health of the chickens. It was a rare treat to be allowed into a live chicken facility; they are usually highly restricted places since 911. To protect the birds and our health, visitors can only see an operation that is temporally closed and empty of birds. As the 5-G was currently replacing roofs on the facility, we were able to learn about and actually see where and how the farm works.



View of barn showing circulation fans at far end.



5-G Owner and Pilgrim Representative answering questions



View of boxes where hens lay eggs.



View of feeders with openings sized for hens heads.

Gardening Tips and Tricks

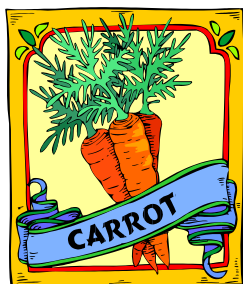


Time to bring delicate plants and bulbs inside for the winter. Try not to “scare” them too much!

Follow the directions found on the extension website for your particular plants. Treat them nice this fall and they will reward you next spring. Also remember to clean those garden tools and lightly oil them before winter storage.

<http://mastergardener.tamu.edu/>

Article & Photo by: Sylvia Johnson



SEEDS FOR LIFE PROJECT:

Through our WCMG Association affiliation with the Tyler Area Council of Garden Clubs, we will resume collection of unopened, commercially packaged seeds to be forwarded to the national Seeds For Life Project. The seeds are used in establishing urban, school, church and food bank gardens across the United States. Please bring your seed packets to any Master Gardeners Association meeting prior to December 2012 and I will see that they are delivered to the office of Texas Garden Clubs, Fort Worth, TX.

Submitted by: Judy Dooley





If anyone is interested in finding our page, all you have to do is go on Facebook, search for Wood County Master Gardeners, Inc. You should find 3 pages to choose from,

1. is a blank site that has been removed
2. is Wood County Master Gardeners from Kentucky
3. Wood County Master Gardeners, Quitman.

Then "like" the page and it will be listed on your profile. In case you don't find it, I am listed as Peggy Smith Rogers and I'll be glad to be your friend. Happy Facebooking!

Peggy Rogers

Upcoming WCMG Scheduled Events

- Every Week end in Oct. Winnsboro Farmer's Market
- Oct. 27 Golden Sweet Potato Festival
- Oct. 27 Volunteer Day at Arboretum
- Nov. 1 Volunteer Hours Due ellen.atkins@hotmail.com
- Nov. 20 WCMG Association Meeting
(Remember the meetings are a great way to earn CEUs!)
- Dec. 1 Volunteer Hours Due ellen.atkins@hotmail.com
- Dec. 10 "MG Wood Works" Newsletter articles and Project Reports due
mgnewsletter@hotmail.com
- Dec. 20 WCMG Association Meeting & **Christmas Party**

SUNSHINE— Reach out to Members



As the Sunshine Chair I request that all the MGs please promptly contact me with any information on member or family illnesses, surgeries, hardships, deaths, or any reason we need to spread a little sunshine on behalf of the WCMGs. We need to stay aware and let our members know we care in their time of need. We all may need our MG family at some time and it is important that we be there for one another.

E-mail: amsdentx@yahoo.com

Thank You, Connie Amsden

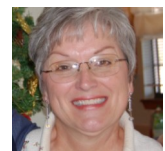


Volunteer Hour Records.



1. Put your name on the form
2. Don't skip lines
3. *Use only listed codes*
4. Interns include class CEU hours and keep reporting even after your 50 hrs. are finished.
5. Interns do not use T (training) or SPKR (speaker) codes
6. No mileage is counted for class hours, only for volunteer hours

E-mail: ellen.atkins@hotmail.com



Other Garden Associations News:

East Texas Chapter Master Naturalists of Tyler invite you to join our upcoming Master Naturalist Certification class and attend our introductory seminars.

The next East Texas Master Naturalist class will be starting up January 19, 2013. The course consists of 60 hrs. of lecture & field trips. Topics of courses include Ecological concepts, Geology and Soils, Weather & Climate, Botany, Ornithology, Entomology, Ichthyology, Herpetology, Mammalogy, Archeology, Forestry, Wetland ecology and more..

We offer introductory seminars for you to sample what our classes will be like. These seminars each count as one of your classes (which is great in case you need to miss one of the regular classes!) The seminars cost \$10 and the cost is applied toward the tuition of \$125 for the course. TPWD/AgriLIFE employees and immediate families can attend for the cost of Books and supplies (\$50)

The next Seminar is Saturday Oct 6 (9AM-12PM) on Ornithology

Monthly chapter meetings are scheduled for the fourth Thursday of each month beginning at 6:30pm and are held at The Nature Center (11942 FM 848, Tyler Texas). Meetings and seminars are open to the public! All Classes and Seminars are held at the Nature Center.

For info please contact Janet Cook: 903-497-0407 or visit: <http://txmn.org/etwd/>

-
- Oct. 30 Dinner tonight—Cooking School— Sulphur Springs
 - Nov. 6 Idea Garden—Trees for Every Yard—Susan Linnar—Tyler Rose Garden
-

November 10: Living From the Ground Up

Mt. Pleasant, Texas

2nd Agricultural Field Day

Our own **MG Holly Hill** will be conducting one of the break out sessions.

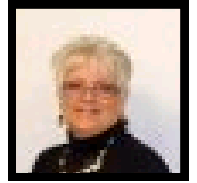
Conference Topics: Sustainable Agriculture, Backyard Homesteading, Specialist lead discussions groups & farmers share their experiences in breakout sessions on various topics including: Raised Bed gardening, Controlling Wild Hogs, Rain-water Harvesting, Farming Your Woodlands, Poultry, Beekeeping and more...

Contact: Lisa York (903) 434-8134 or for info: www.facebook.com/events/205361822929436/?ref=nf

Wood County Master Gardeners'

History

2003 - 2011



Compiled by: Peggy Rogers**

Part 5

2010 Officers: Connie Amsden-President, Jim Willis-Vice President, Karen Anderson-Secretary and Peggy Rogers-Treasurer. Directors were Karen Anderson and Billie Wilder with state conference being in Dallas. Library – Anita Baker – Historian/Scrapbook. Kathleen Denmon – email coordinator.

Ellen Atkins followed Nancy Weaver as the Volunteer Hours Coordinator with Bart Bartlett's assistance.

At the Quitman Chamber of Commerce Banquet, the Wood County Master Gardeners were awarded the Pilot Club of Quitman's "Humanitarian Award" for their contributions toward the rebuilding of the Wood County Special Education Greenhouse and their continued support.

First time to enter the Pilot Club of Quitman Chili Cook-off, WCMG won 2nd place for the Judge's Choice (best chili) with Sandy Marshall's husband Marvin doing the cooking.

March 6, 2010, 8th annual Spring Conference program was entitled "The Buzz About Our Environment - Saving Water...Saving Bees". Speakers Dotty Woodson and Bobby Etherton treated the audience to informative and interesting information on water conservation and all about bees. 2009 Conference Committee served for this year also.

The Association joined the Tyler Area Council of Garden Clubs and Judy Dooley would be the contact person.

2010 TMGA Awards for work performed in the Year 2009

1st place – Pam Riley, Outstanding Individual

(continued on next page)

WCMG HISTORY

3rd place – Outstanding Association in Texas

3rd place – Mass Media for the Website

3rd place – Education for the Science Day Field Trip

2nd place – Project for the Special Ed Greenhouse

2nd place – Newsletter MG Wood Works

2nd place – Posters for Wildscape by Liz Soutendijk (ribbon)

2010 WCMG Association End of Year Award recipients were:

Linda Avant – Master Gardener of the Year

Clyde & Fran McKinney – Project leaders of the Year

Linda Avant – Innovator of the Year

Pam Riley – Community Outreach

Shirley Boles – Rookie of the Year (member of 2010 class)

Pam Riley – Top Volunteer with most hours volunteered (1st year for award)

By the end of the year, Master Gardeners had volunteered 5,165 hours which translated into \$104,586.20.



2012 MG Officers

Peggy Rogers	President
Marti McAree	Vice President
Karen Anderson	Treasurer
Joan Morgan	Secretary



****Thank you to: Clint Perkins – AgriLife Extension, Linda Timmons, Eileen Bartlett, Pam Riley, Billie Wilder and Judy Dooley for their time of looking through their personal records for information and to all of the MG's that I inundated with emails looking for information. Additional information was taken from records in AgriLife Ext office, scrapbooks, newsletters and minutes**

WOOD COUNTY MASTER GARDENER			
PROJECT		2012 PROJECTS	
CHAIR		EMAIL	
Hawkins Helping Hands		Lucy Germany	lgermany@etex.net
Junior Master Gardeners		Linda Avant	linavant@peoplescom.net
Mineola Nature Preserve Sensory Garden		Peggy Rogers	peggyrogersc21@gmail.com
Mineola Nature Preserve Wildscape		Joan Morgan	vjmorgan903@gmail.com
Quitman Arboretum & Botanical Garden		Pam Riley	pam_riley2003@yahoo.com
Quitman Public Library		Linda Cowan	ladypeanut1255@yahoo.com
Quitman Special Ed Greenhouse		Fran McKinney	mckfran@gmail.com
		Clyde McKinney	mckclyde@gmail.com
Winnsboro Depot		Jerrie Sutphin	granfarm@peoplescom.net
		Sandra Patrick	sppat57@suddenlink.net
Winnsboro Garden Club		Jerrie Sutphin	granfarm@peoplescom.net
		Sandra Patrick	sppat57@suddenlink.net
Winnsbo Library		Jerrie Sutphin	granfarm@peoplescom.net
		Sandra Patrick	sppat57@suddenlink.net
Winnsboro Morgan Mercy Mission		Jerrie Sutphin	granfarm@peoplescom.net
		Sandra Patrick	sppat57@suddenlink.net
WCMGA		COMMITTEES	
Awards	2012	Eileen Bartlett	ebartlet3@yahoo.com
Budget Development		Karen Anderson	kkjta46@yahoo.com
Community Service		Connie Amsden	amsdentx@yahoo.com
Facebook		Peggy Rogers	peggyrogersc21@gmail.com
Festivals		Lynette Irizary	platinumfish@msn.com
Festival CoChair		Lin Grado	lingrado@gmail.com
Historian/Scrapbook			
Intern Class	2012	Gail Newman	travlinnewman@aol.com
Newsletter		Sylvia Johnson	mgnewsletter@hotmail.com
Nominating		Nancy Weaver, Mike Ferguson, Carolyn Fitzgerald	
Spring Conference	2012	Ellen Atkins	ellen.atkins@hotmail.com
Sunshine		Connie Amsden	amsdentx@yahoo.com
Volunteer Recorder (Hrs/CEUs)		Ellen Atkins	ellen.atkins@hotmail.com
Website			
Website Email		Ruth Allen	ruth_allen1@msn.com
		Lynette Irizarry	platinumfish@msn.com
OFFICERS			
CEA-Advisor			
President	Peggy Rogers		peggyrogersc21@gmail.com
Vice President	Marti McAree		dmcaree1313@gmail.com
Secretary	Joan Morgan		vjmorgan903@gmail.com
Treasurer	Karen Anderson		kkjta46@yahoo.com
TMGA Director	Karen Anderson		kkjta46@yahoo.com
TMGA Director	Peggy Rogers		peggyrogersc21@gmail.com