

Over the Garden Gate



www.txmg.org/wichita

Volume XIV, No 9, September, 2022



Thank you Lord for the long awaited rainfall!
Photo & comment from Georgia Spoonemore.

Enter your volunteer (15) & Training (6) hours in the MG
volunteer management system <https://vms.texasmg.org/>

Association Contacts: Rob Cherry, President, 940-500-2675 ; Vice-president, vacancy; Georgia Spoonemore, Secretary, 580-467-4696; Mary Alfert, Treasurer, 940-782-9745.

State Directors: Dennis Dohrer and Anne Dohrer; alternates: Mary Barry and Marie Hoover.

WCMG Webpage: Michelle Howard, administrator **Newsletter & Facebook:** Gail Elmore, editor/admin

Educational programs of the Texas A&M AgriLife Extension Service are open to all people without regard to race, color, religion, sex, national origin, age, disability, genetic information or veteran status. The Texas A&M University System, U.S. Department of Agriculture, and the County Commissioners Courts of Texas Cooperating.

Georgia's Project!

During the heat of the summer I decided to do something about the dwarf yaupon holly shrubs in front of our house. They had gotten to 4 ft tall before the bad freeze of 2021. That summer they barely made a showing. I thought they would surely be dead by the next summer. This summer they were covered with leaves but only on the outer layer. They looked great from the road but the insides were so dead. So, I knew it was either pull them up or take a chance and cut them back severely. I chose to start with cutting them back, and boy was I surprised at the outcome. Photos & comments from Georgia Spoonemore





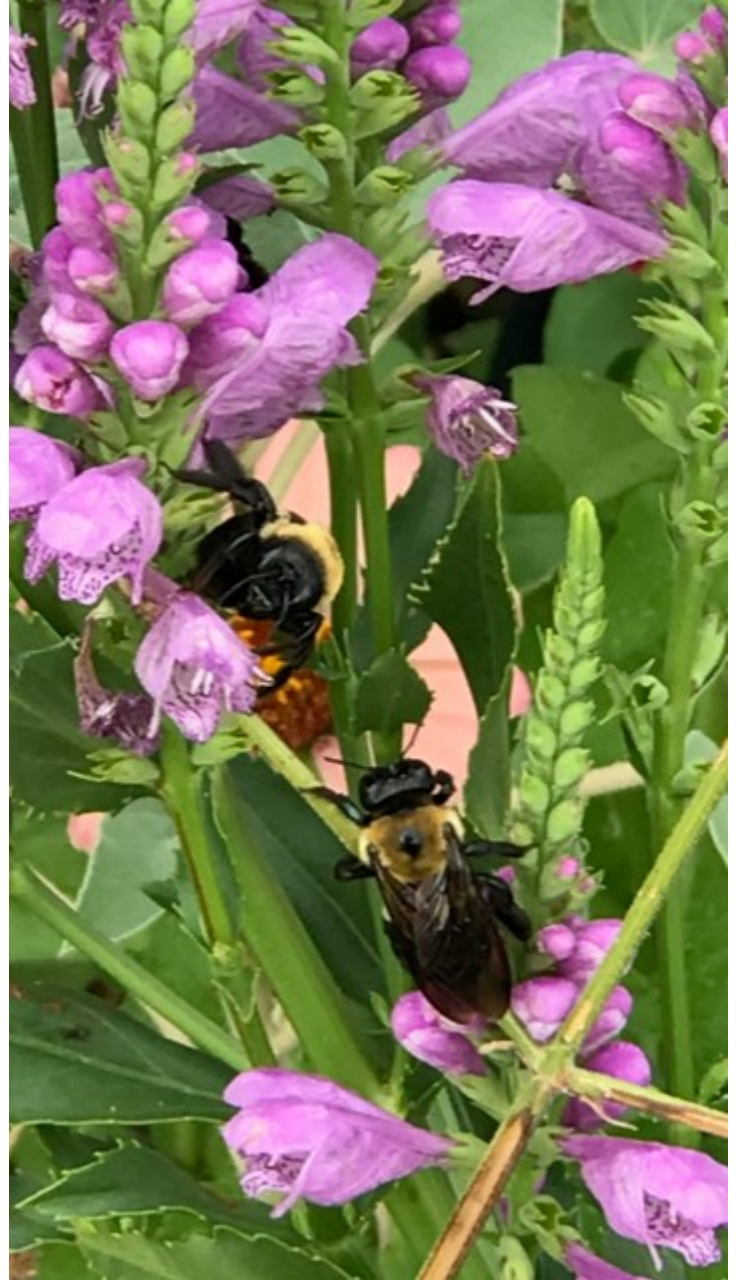
Farmer's Market

Pictures from the August Farmer's Market.

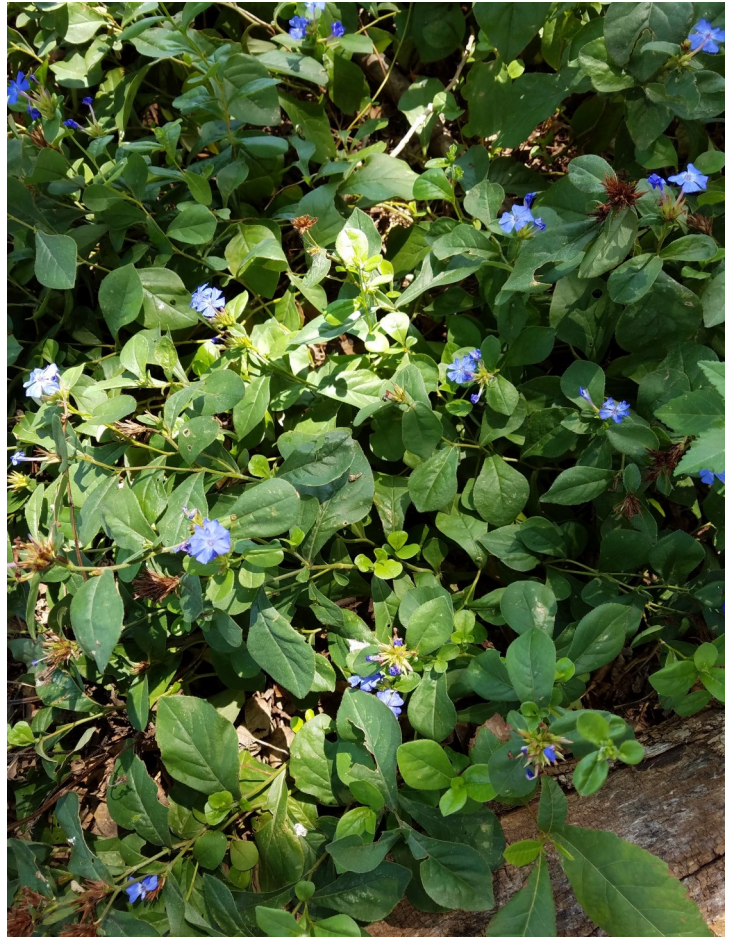
This was the last Market at the 8th and Ohio location. Most of the produce vendors are moving to the 8th and Austin location.

We passed out information on planting a fall garden to about 100 interested people. They were very happy to receive many of the donated seeds. Many first time Gardeners were going to try growing their seeds in pots. Hopefully the rain will be an encouragement to the "first time Gardeners." Photos & comments from Marilyn Putthoff.





Top & Center: Beautiful bees pollinating obedient plant. **Bottom:** Some of our resident grasshoppers. Photos & comments from Georgia Spoonemore.





Facing page-Top, left: Rain Lilies.

Right: Plumbago is blooming again!

Bottom, left: close up of a clump of Oxblood or Schoolhouse Lily (*Rhodophiala bifida*), **Right:** Several clumps of Oxblood Lilies.

This page-Top, left: Crape Myrtle with Snow on the Mountain

(*Euphorbia marginata*), **Right:** Flame Acanthus (*Anisacanthus quadrifidus* var.) humming birds love this bush!

Bottom: Snow on the Mountain by itself. Use care around this plant—the sap causes an irritating, itching rash!

Photos & comments from Gail Elmore



Traveling Gardener

We have traveled to Minnesota during the summer for a number of years. We are always amazed at the cool weather and what we see when we walk in nature.

Photos & comments from Becky Trammell

Northern
Leopard Frog



Broadleaf
Arrowhead





Waterlily



Lake
Bemidji

Local Events

September 10, Farmer's Market: Herbs. Season Extenders like greenhouses & row covers. Good time to thin your mint & other herbs. Please label them!

September 15, 5:00 pm: The Burk Garden Club will meet at First Bank, in their community room.