

Over the Garden Gate



www.txmg.org/wichita

Volume XIV, No 7, July 2022

President's Report

Hello Friends! We are having an absolutely scorching summer and I hope you are able to keep your gardens going and alive, using water-wise techniques and mulch-mulch- mulching! I am getting ready to start some veggies for my fall garden and thinking of cooler days already.

I have not heard from anyone concerning the final version of the Wichita Master Gardener Bylaws, which was emailed to members June 21. We found a few typos and changed the wording for checks and signatures, but I believe it is a workable document. We will have a vote at the August general meeting.

We had one of the greatest state conferences. There were over 750 participants from 103 counties! Recordings will be available to registered participants in the Texas Master Gardener Conference portal under the Recordings tab from May 25th until September 20, 2022.

SEARCH FOR EXCELLENCE AWARDS

We are still congratulating ourselves for placing in three categories for Search for Excellence Awards for 2021. They are the following:

- **3rd Place**-Youth Category for medium class –Burkburnett Boys and Girls Club Garden- Mary Rhoads- coordinator
- **1st Place**–Project in medium class- Wichita Falls Arts Alive Home and Garden Festival-Wichita Master Gardener Booth- Elsie Berry - coordinator
- **2nd Place**- Outstanding Individual in medium class- Georgia D. Spoonemore

THANK YOU TO ROB CHERRY, JEFF BLACKLOCK AND ELSIE BERRY FOR WORKING ON THE SUBMISSIONS FOR THESE AWARDS. (Continued on page 2)

Local Events

July 5, 5:30 pm: The Wichita County Master Gardener Association will meet at Rolling Meadows. Our program will be Bees & Pesticides by Rob Cherry.

July 9, Farmer's Market: Bulbs & tubers. This is a good time to thin your lilies, cannas, iris, etc. Please label them!

July 21, 5:00 pm: The Burk Garden Club will meet at First Bank, in their community room.



Enter your volunteer (15) & Training (6) hours in the MG volunteer management system <https://vms.texasmg.org/>

Association Contacts: Elsie Berry, President, 817-988-9846; Rob Cherry, Vice-president, 940-500-2675; Jeff Blacklock, Secretary, 940-867-0310; Mary Alfert, Treasurer, 940-782-9745.

State Directors: Dennis Dohrer and Anne Dohrer; alternates: Mary Barry and Marie Hoover.

WCMG Webpage: Michelle Howard, administrator **Newsletter & Facebook:** Gail Elmore, editor/admin

Educational programs of the Texas A&M AgriLife Extension Service are open to all people without regard to race, color, religion, sex, national origin, age, disability, genetic information or veteran status. The Texas A&M University System, U.S. Department of Agriculture, and the County Commissioners Courts of Texas Cooperating.

(continued from page 1) VMS reporting- I sincerely hope that everyone has been able to figure out and solve any problems reporting their hours on the VMS system. I still appreciate the helpful zoom meeting coordinated by Jayla Fry in May!

Marie Hoover, our project coordinator has been appointed over the VMS calendar. Please let her know as soon as possible when you have a calendar item or need help so she can get it on the calendar as early as possible and also work on calling for help among members. Remember that you can go on the VMS calendar and click on the individual projects to sign up and let the project leaders know you are coming. Of course, Jeff Smith is general VMS coordinator.

Please get your project reports in to David Graf, Marie Hoover and copy also to Elsie Berry before the 29th of each month so we can tally them up and plan! Please send these by email if at all possible! Please get your hours in each month by the 29th also!

Special thanks to Kristen Hoskins for the wonderfully informative June program on Hoop house Update- what she has learned. She has invited WMGA to come out for a visit and we need to set a date for that at the next meeting.

Upcoming events:

Rob Cherry will be presenting a program on Bees and pesticides at the July 5 meeting at Rolling Meadows.

Ed Bond will present a program on gardens ponds for August.

Bill Holcombe, Clay County AgriLife agent will present the September program- Help with the most frequent calls.

This will bring us to October and November, so we need two more suggestions for programs. Please let me know if you know a good speaker for our group.

I'm so glad to hear that Marilyn Putthoff is doing much better and former member Joann Plaxco is doing well too.

Stay well and cool and see you all soon!

Elsie Anne Berry

President WMGA



Left: June speaker Kristen Hoskins.

Right: Awards of Excellence Winners: Elsie Berry, **1st Place** –Project in medium class

Mary Rhoads, **3rd Place**- Youth Category for medium class

Georgia Spoonemore, **2nd Place**- Outstanding Individual in medium class





Sandy's Gems

Top: Crape myrtle 'Sequoia'

Bottom: Pincushion, scabious
sp.

Photos & comments from
Sandy Ledy.



Marie's Gardens



Top: Annual Garden

Center: Zinnia Garden

Bottom: Shade Garden

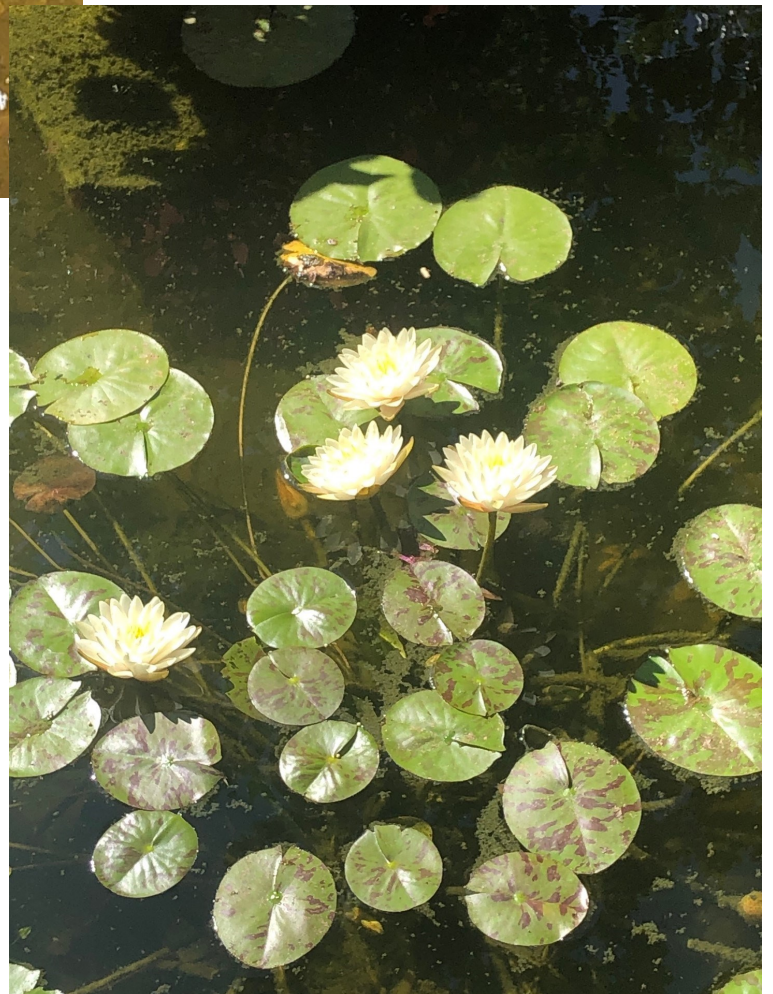
Photos & comments
from Marie Hoover



Mary Rhoads' Gardens

Water lilies in my water garden.

Photos & comments from Mary
Rhoads.



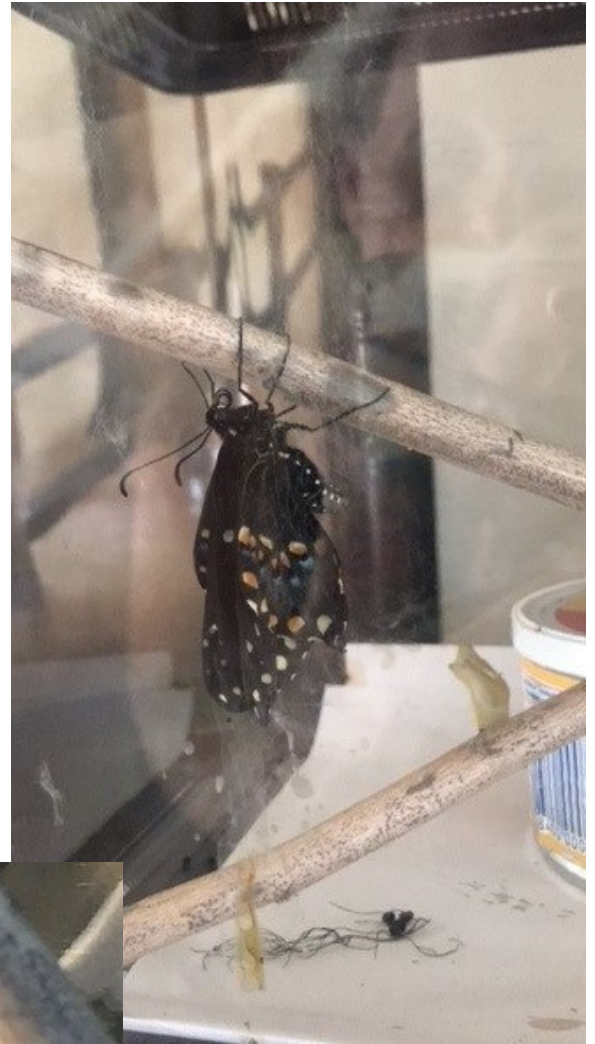
Enjoying lots of butterfly activity in the gardens. I've also raised a few inside to raise the numbers outside. Georgia Spoonemore



Top, Left: Eggs of the Tiger Swallowtail butterfly. Found on Wafer Ash tree. **Right:** Giant Swallowtail caterpillar on Wafer Ash tree.

Bottom: Honey bees enjoying our Russian Sage.

Photos & Comments from Georgia Spoonemore.



Top, Left: Eastern Black Swallowtail caterpillar on dill. **Right:** Eastern Black Swallowtail newly eclosed, and pumping up her wings.

Bottom: Gorgeous Eastern Black Swallowtail ready for release.

Photos & Comments from Georgia Spoonemore.

Farmer's Market

A variety of activities were presented at the June Market.

Ann Dohrer and Judy Beechler helped children make terrariums with plastic bottles. Georgia Spoonmore placed butterfly tattoos on over 80 children.

Rob Cherry brought his "bee hive" to the delight of children and adults.

Information on Native Plants and Pollinators and lots of seeds and plants were given to many interested patrons.

Thanks to everyone for all the plants. Next month is Bulbs and Tubers. A good time to "thin" out the lilies and iris! Photos & comments from Marilyn Putthoff



We had a great turnout at the Farmers Market. Lots of tattoos, plants, seeds, and info was given away. Some even planted seeds in a bottle greenhouse. Photos & comments from Georgia Spoonmore.



Elsie's Fairy Garden

Photos from Elsie Berry



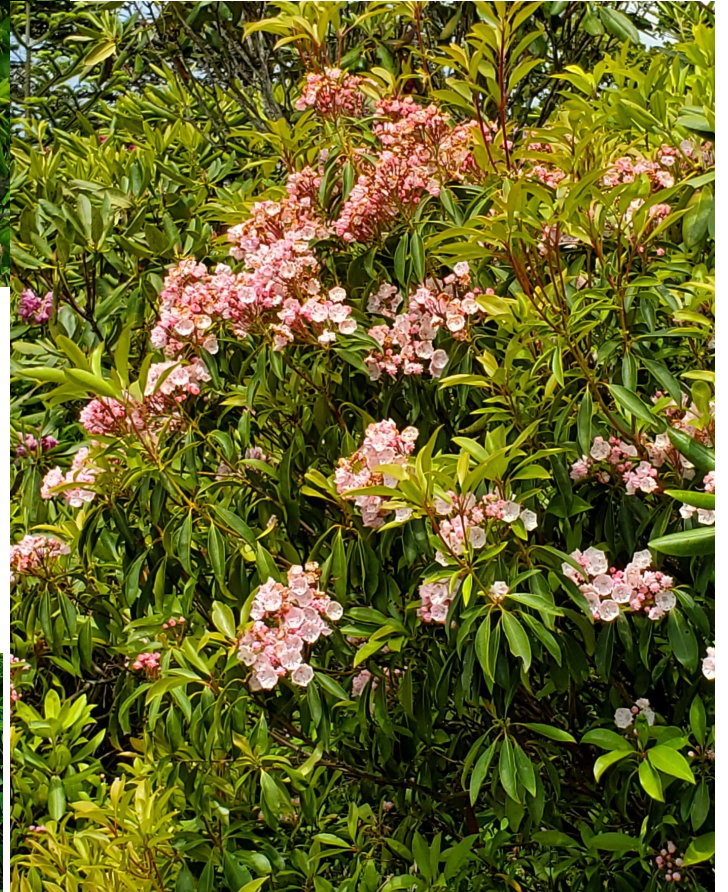
Welcome Back

Gail's Beauties!

Photos from Gail Elmore



Traveling Gardener



North Carolina Flame Azalea (bottom) , Mountain Laurel (right), and Rhododendron (top). Along the roadside of the Blue Ridge Parkway. Photos & comments from Becky Trammell.

