

COMPLETE SPECIES LIST

HABIT	COMMON NAME	SCIENTIFIC NAME	HEIGHT	SOIL MOISTURE	WATER USE	LIGHT	STAGE	ROOT DEPTH	SG	FC	NL
GRASS / GRASS-LIKE	Big bluestem	<i>Andropogon gerardi</i>	4-8 ft	Moist	Low	Full Sun	Established	< 9 ft			✓
	Blue grama	<i>Bouteloua gracilis</i>	1-3 ft	Dry	Low	Full Sun	Established	< 4 ft	✓	✓	
	Broomsedge bluestem	<i>Andropogon virginicus</i>	2-5 ft	Moist	Low	Full Sun	Established				✓
	Buffalograss	<i>Bouteloua dactyloides</i>	0-1 ft	Dry	Low	Full Sun	Established	< 8 ft	✓		
	Bunchy bluestem	<i>Andropogon glomeratus</i>	2-5 ft	Moist	Low	Full Sun	Established		✓		✓
	Curly mesquite	<i>Hilaria belongii</i>	0-1 ft	Dry	Low	Full Sun	Established		✓		
	Green sprangletop	<i>Leptochloa dubia</i>	2-3 ft	Dry	Low	Full Sun	Established				✓
	Hairy grama [Chaparral]	<i>Bouteloua hirsuta</i>	1-3 ft	Dry	Low	Full Sun	Established		✓	✓	
	Halls panicum	<i>Panicum hallii</i> var. <i>hallsii</i>	1-3 ft	Dry-Moist	Low	Full Sun	Established		✓		
	Little bluestem	<i>Schizanthum scoparium</i>	2-4 ft	Dry	Low	Full Sun	Established	< 6 ft			✓
	Plains lovegrass	<i>Eragrostis intermedia</i>	1-3 ft	Dry	Low	Full Sun	Established			✓	
	Pyrene junegrass	<i>Koeleria macrantha</i>	1-4 ft	Dry	Low	Full Sun	Established			✓	
	Purple threeawn	<i>Arnica purpurea</i> var. <i>purpurea</i>	1-3 ft	Dry-Moist	Low	Full Sun	Established	< 4 ft	✓		
	Sand love grass	<i>Eragrostis trichodes</i>	1-5 ft	Dry	Low	Full Sun	Established				✓
	Sideoats grama	<i>Bouteloua curtipendula</i>	1-3 ft	Dry-Moist	Low	Full Sun	Established	< 8 ft	✓	✓	
	Silver bluestem	<i>Bouteloua verticillata</i>	3-6 ft	Dry	Low	Full Sun	Established				✓
	Switchgrass	<i>Panicum virgatum</i>	3-6 ft	Dry-Moist	Low	Full Sun	Established	< 13 ft			✓
	Texas cupgrass	<i>Eriochloa sericea</i>	1-3 ft	Dry	Low	Full Sun	Established			✓	
	Texas grama [Atascosa]	<i>Bouteloua rigidula</i>	0-1 ft	Dry	Low	Full Sun	Established		✓		
	Texas wintergrass	<i>Nassella leucosticha</i>	1-3 ft	Dry-Moist	Low	Full Sun	Established			✓	✓
White tridens	<i>Tridens albens</i>	1-3 ft	Moist	Low	Full Sun	Established				✓	
Yellow indian grass	<i>Sorghastrum nutans</i>	3-8 ft	Dry-Moist	Low	Full Sun	Established	< 9 ft			✓	

LEGEND

WATER USE
 Low: [1 box] Low-Medium: [2 boxes] Medium: [3 boxes] High: [4 boxes]

LIGHT
 Full Sun: [Sun icon] Part Shade: [Sun icon with circle] Shade: [Circle icon]

STAGE
 Early Colonizer: [Green box] Not an Early Colonizer: [Yellow box]

LANDSCAPE TYPE
 SG - Short Grass
 FC - Fine Grass
 NL - No-Limit

COMPLETE SPECIES LIST

HABIT	COMMON NAME	SCIENTIFIC NAME	HEIGHT	SOIL MOISTURE	WATER USE	LIGHT	STAGE	SG	FC	ML
	American basket-flower	<i>Centaurium americanum</i>	2-5 ft	DRY	■	☉	■			✓
	Black-eyed susan	<i>Rudbeckia hirta</i>	2-3 ft	DRY	■	☉	□		✓	✓
	Blue flax	<i>Linum lewisii</i>	2-3 ft	DRY	■	☉	■		✓	✓
	Clasping coneflower	<i>Gnaphalium angustifolium</i>	2-3 ft	MOIST	■	☉	■		✓	
	Common sunflower	<i>Helianthus annuus</i>	2-8 ft	DRY	■	☉	□			✓
	Cudweed	<i>Engelmannia perfoliata</i>	2-3 ft	DRY	■	☉	■		✓	✓
	Gayfeather	<i>Liatris scariosa</i>	2-3 ft	DRY	■	☉	■			✓
	Illinois bundleflower	<i>Desmodium illinoense</i>	2-3 ft	MOIST	■	☉	□			✓
	Indian blanket	<i>Gaillardia pinnatifida</i>	2-3 ft	DRY	■	☉	□		✓	✓
	Lanceleaf coneflower	<i>Coneopsis lanceolata</i>	2-3 ft	DRY	■	☉	□			✓
	Lemon mist	<i>Monarda citrifolia</i>	2-3 ft	DRY	■	☉	□		✓	✓
	Maximilian sunflower	<i>Helianthus maximiliani</i>	4-6 ft	DRY	■	☉	□			✓
	Meadow blue sage	<i>Salvia formosa</i>	2-3 ft	MOIST	■	☉	■			✓
	Pink evening primrose	<i>Oenothera speciosa</i>	2-3 ft	DRY	■	☉	□	✓		
	Plains coneflower	<i>Coneopsis tinctoria</i>	2-3 ft	MOIST	■	☉	□		✓	✓
	Prairie parley	<i>Polypogon monspeliensis</i>	2-3 ft	DRY	■	☉	■			✓
	Standing cypress	<i>Sporobolus vaginatus</i>	2-3 ft	DRY	■	☉	■			✓
	Texas bluebonnet	<i>Lupinus texensis</i>	2-3 ft	DRY	■	☉	□	✓		
	Texas yellow star	<i>Linum lewisii</i>	2-3 ft	DRY	■	☉	■		✓	✓
	White gaura	<i>Gaura lindheimeri</i>	2-5 ft	MOIST	■	☉	■			✓

FOR

WATER USE
 ■ LOW
 ■ E. LOW-MEDIUM
 ■ MEDIUM
 ■ HIGH

LIGHT
 ☉ SUN
 ☉ PART SHADE
 ○ SHADE

STAGE
 □ EARLY COLORIZER
 ■ NOT AN EARLY COLORIZER

LANDSCAPE TYPE
 ■ S - SHORT GRASS
 ■ FC - FINE COARSE
 ■ NL - NO-LAWN

SHORT GRASS ASSEMBLAGE

Overview:

COMMON NAME	SCIENTIFIC NAME
Blue grama	<i>Bouteloua gracilis</i>
Buffalograss	<i>Bouteloua dactyloides</i>
Curly mesquite	<i>Milina trisengen</i>
Hairy grama (Chaparral)	<i>Bouteloua hirsuta</i>
Half's panicum	<i>Panicum halfi</i> var. <i>halfi</i>
Pink evening primrose	<i>Oenothera speciosa</i>
Purple threeawn	<i>Arabis purpurea</i> var. <i>purpurea</i>
Sideoats grama	<i>Bouteloua curtipendula</i>
Texas bluebonnet	<i>Lupinus texensis</i>
Texas grama (Atascosa)	<i>Bouteloua rigidiflora</i>

Species descriptions:

Blue grama

(*Bouteloua gracilis*)



IDENTIFICATION INFORMATION

- 1-2' tall bunch grass
- Blades usually 1/4"
- Seedheads suspended horizontally from stem tip
- Seeds hang down on one side of seedhead, giving eyebrow-like appearance
- Gray-green in growing season, tan when dormant
- Blades smooth and nearly hairless
- No ligule



LEGEND		LIGHT		STAGE	
	LOW		SUN		EMPTY COLONIES
	LOW-MEDIUM		PART SHADE		NOT AN EARLY COLONIZER
	MEDIUM		SHADE		
	HIGH				

Buffalograss

(*Bouteloua dactyloides*)



IDENTIFICATION INFORMATION

- 3-12" tall grass, spreads with runners
- Nodes not hairy
- Short ligule
- Blades gray-green or blue-green, hairy
- Short, compact male inflorescences resemble tiny flags
- Female flowers and seeds resemble burrs without spines, occur lower on the plant



Curly mesquite

(*Milaria belangeri*)



IDENTIFICATION INFORMATION

- 6" tall grass, spreads with runners
- Nodes are hairy
- Tall ligule
- Leaves can become curly when dormant
- Leaf blades are somewhat hairy
- 1-1.5" inflorescence that sticks straight up on the end of the stem



WATER USE		LIGHT		STAGE	
LOW	SUN	EMERLY COLORIZER	EMERLY COLORIZER	NOT AN EMERLY COLORIZER	EMERLY COLORIZER
LOW-MEDIUM	HALE SHADE	EMERLY COLORIZER	EMERLY COLORIZER	NOT AN EMERLY COLORIZER	EMERLY COLORIZER
MEDIUM	SHADE	EMERLY COLORIZER	EMERLY COLORIZER	NOT AN EMERLY COLORIZER	EMERLY COLORIZER
HIGH	SHADE	EMERLY COLORIZER	EMERLY COLORIZER	NOT AN EMERLY COLORIZER	EMERLY COLORIZER

Hairy grama [Chaparral]

(*Bouteloua hirsuta*)



IDENTIFICATION INFORMATION

- 10-18" tall bunch grass.
- Inflorescence looks like an eyebrow, similar to blue grama, but with a long, pointed end
- Blades hairy on margins, especially near bottom
- Short ligule



Hall's panicum

(*Panicum hallii* var. *hallii*)



IDENTIFICATION INFORMATION

- 1-3' tall bunch grass
- Leaf blades are slick
- Open, spreading inflorescence



LEGEND		LIGHT		STAGE	
	LOW		SUN		EARLY COLORIZER
	LOW-MEDIUM		HEAT SHADE		NOT AN EARLY COLORIZER
	MEDIUM		SHADE		
	HIGH				

Pink evening primrose

(*Oenothera speciosa*)



IDENTIFICATION INFORMATION

- Sprawling, 2-3' plant with flowers up to 3" across
- Flowers have 4-petal and range from dark pink to white
- Leaves are dark green and frequently have dark purplish spots, shape can be variable



Purple threeawn

(*Aristida purpurea* var. *purpurea*)



IDENTIFICATION INFORMATION

- 18-30" tall bunch grass
- Leaf blades in a dense basal cluster around stems.
- Arching, narrow, hairless blades
- Each floret has three long, straight awns, or bristles, on the tip, giving the whole inflorescence a bristly texture
- Purple inflorescence in summer and fall, straw-colored when dry



LEGEND		WATER USE		LIGHT		STAGE	
■	LOW	■	SUN	■	EARLY COLORIZER	■	NOT AN EARLY COLORIZER
■	LOW-MEDIUM	■	HEAT SHADE	■		■	
■	MEDIUM	■	SHADE	■		■	
■	HIGH	■		■		■	

Texas grama [Atascosa]

(*Bouteloua rigidisetra*)



IDENTIFICATION INFORMATION

- 6-16" tall bunch grass
- Spreading, bell-shaped seeds are purplish on the outside and turn straw-colored when dry
- Seeds are distributed along a spike above the blades
- Can be confused with side-oats grama, but florets are more open and bell shaped and plant is much shorter



LEANS	WATER USE	LIGHT	STAGE
	LOW	SUN	EARLY COLONIZER
	LOW-MEDIUM	PART SHADE	NOT AN EARLY COLONIZER
	MEDIUM	SHADE	
	HIGH		

FINE COARSE ASSEMBLAGE

Overview:

COMMON NAME	SCIENTIFIC NAME
Black-eyed susan	<i>Rudbeckia hirta</i>
Blue flax	<i>Linum lewisii</i>
Blue grama	<i>Bouteloua gracilis</i>
Clasping coneflower	<i>Dioscorea angusticaulis</i>
Cortleaf daisy	<i>Engelmannia perstensis</i>
Hairy grama (Chaparral)	<i>Bouteloua hirsuta</i>
Indian blanket	<i>Gaillardia pulchella</i>
Lemon mint	<i>Monarda citriodora</i>
Little bluestem	<i>Schizachyrium scoparium</i>
Plains coneflower	<i>Coneopsis tinctoria</i>
Plains lovegrass	<i>Eragrostis intermedia</i>
Prairie junegrass	<i>Koeleria macrantha</i>
Sideoats grama	<i>Bouteloua curtipendula</i>
Texas bluebonnet	<i>Lupinus texensis</i>
Texas cupgrass	<i>Eriochloa sericea</i>
Texas grama (Amarisco)	<i>Bouteloua rigidula</i>
Texas wintergrass	<i>Moisetta leucosticha</i>
Texas yellow star	<i>Lindheimeria texana</i>
White tridens	<i>Tridens albescens</i>

Species descriptions:

Black-eyed Susan

(*Rudbeckia hirta*)



IDENTIFICATION INFORMATION

- 1-2' tall flowering plant
- Bright-yellow, 2-3" wide, daisy-like flowers with dark centers
- The ray florets (look like petals) may have a maroon splotch at the base
- The stems and scattered, oval leaves are covered with dense hairs.



Blue flax

(*Linum lewisii*)



IDENTIFICATION INFORMATION

- 18-20" tall flowering plant
- Grows in a clump, stalks often lean at an angle
- Five-petaled flowers are pale blue, 1-1.5" across, and veined in darker blue
- Each stem produces several flowers
- The stem is leafy when the plant is young, gradually losing most of its leaves as it matures
- Leaves are narrow and about 3/4" long



GROWTH	WATER USE		LIGHT			STAGE	
	LOW	LOW-MEDIUM	SUN	PART SHADE	SHADE	EARLY COLONIZER	NOT AN EARLY COLONIZER
■ ■ ■ ■	■ ■ ■ ■	■ ■ ■ ■	● ● ● ●	● ● ● ●	○ ○ ○ ○	■ ■ ■ ■	■ ■ ■ ■

Blue grama (*Bouteloua gracilis*)



IDENTIFICATION INFORMATION

- 3-2' tall bunch grass
- Blades usually <4"
- Seedheads suspended horizontally from stem tip
- Seeds hang down on one side of seedhead, giving eyebrow-like appearance
- Gray-green in growing season, tan when dormant
- Blades smooth and nearly hairless
- No ligule



Clasping coneflower (*Drosera amplicaulis*)



IDENTIFICATION INFORMATION

- 2-3' tall flowering plant
- Terminal, solitary flower heads
- Ray florets (look like petals) yellow with reddish-purple bases and droop away from the dark, elongated, cone-shaped center
- The leaves are oblong with heart-shaped, clasping bases



LEAF		LIGHT			STAGE	
	LOW		SUN		EMPTY CONEHEAD	
	LOW-MEDIUM		HOT SHADE		HOT AND EMPTY CONEHEAD	
	MEDIUM		SHADE			
	HIGH					

Cutleaf daisy

(*Engelmannia peristensis*)



IDENTIFICATION INFORMATION

- Up to 2' tall flowering plant
- Long-stalked, yellow flowers are about 1.5" across
- The 8-10 ray florets (look like petals) are indented at the tip
- Leaves are deeply cleft and toothed, form a large clump at the plant's base



Hairy grama [Chaparral]

(*Bouteloua hirsuta*)



IDENTIFICATION INFORMATION

- 10-28" tall bunch grass.
- Inflorescence looks like an eyebrow, similar to blue grama, but with a long, pointed end



WATER USE		LIGHT		STAGE	
Low	SUN	Early Colonizer	Low	Early Colonizer	Not an Early Colonizer
Low-Medium	Moist Shade	Trace	Medium		
Medium			High		
High					

Indian blanket

(*Gaillardia pulchella*)



IDENTIFICATION INFORMATION

- 1-2' tall flowering plant.
- Stems are hairy and usually much-branched
- Stems are mostly leafy near the base
- The flower heads are 1-2" across with a red center and a yellow outer band
- Ray florets (look like petals) have 3 teeth at the end
- The centers of the flower heads are brownish red



Lemon mint

(*Monarda citrifolia*)



IDENTIFICATION INFORMATION

- 1-2' tall flowering plant
- Stems have several whorls of purple to white flowers
- The lance-shaped leaves have a distinctive citrus scent when rubbed or crushed
- Leaves opposite
- Seedheads form distinctive globe-like clusters spaced up the stem



WATER USE		LIGHT		STAGE	
LOW	SUN	EMPTY COLORIZER	EMPTY COLORIZER	EMPTY COLORIZER	EMPTY COLORIZER
LOW-MEDIUM	PART-SHADE	PART-SHADE	EMPTY COLORIZER	EMPTY COLORIZER	EMPTY COLORIZER
MEDIUM	SHADE	SHADE	EMPTY COLORIZER	EMPTY COLORIZER	EMPTY COLORIZER
HIGH			EMPTY COLORIZER	EMPTY COLORIZER	EMPTY COLORIZER

Little bluestem

(*Schizachyrium scoparium*)



IDENTIFICATION INFORMATION

- 3' tall bunch grass
- Foliage 18-24" high
- Forms very dense mounds up to 1' across
- Slender, blue-green inflorescence stems appear in August, grow to about 3' by September
- Stems turn red or white in fall
- Seeds have white tufts, visible in winter



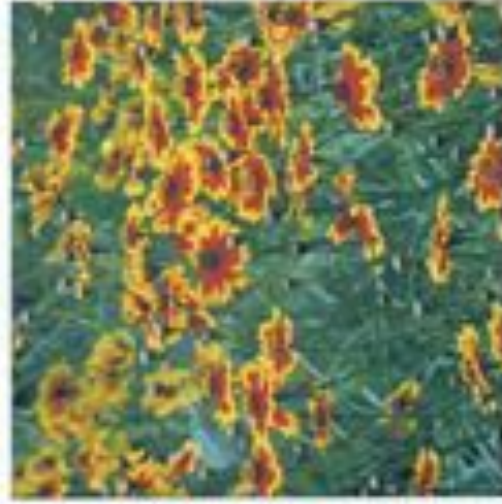
Plains coreopsis

(*Coreopsis tinctoria*)



IDENTIFICATION INFORMATION

- 1-2' tall flowering plant
- Stems branched
- Leaves are pinnately-compound
- Small, abundant yellow flowers have maroon centers
- Ray florets (look like petals) have notched edges



WATER USE		LIGHT		STAGE	
Low	SUN	EMPTY COLLECTOR	Low	EMPTY COLLECTOR	Low
Low-Medium	PART SHADE	NOT AN EMPTY COLLECTOR	Medium	NOT AN EMPTY COLLECTOR	Medium
Medium	SHADE		High		High
High					

Plains lovegrass

(*Eragrostis intermedia*)



IDENTIFICATION INFORMATION

- 1-3' tall bunch grass
- Long, narrow blades
- Inflorescence nearly half as long as the entire plant
- The seed head is airy and diffusely branched with many small spikelets
- Small tufts of hairs at base of inflorescence branches
- Herringbone pattern on seedheads



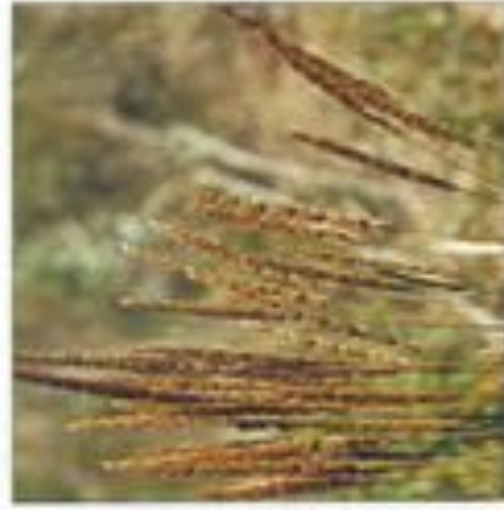
Prairie junegrass

(*Koeleria macrantha*)



IDENTIFICATION INFORMATION

- 1-2' tall bunch grass
- Dense, spike-like seedheads are silvery green in spring and turn tan or brown by mid-summer
- Blades are gray-green



LEGEND		LIGHT		STAGE	
	LOW		SUN		EMERG COLLECTOR
	LOW-MEDIUM		PART SHADE		POT W/EMERG COLLECTOR
	MEDIUM		SHADE		
	HIGH				

Sideoats grama

(*Bouteloua curtipendula*)



IDENTIFICATION INFORMATION

- 2-3' tall bunch grass
- Stems in erect, wiry clumps
- Purplish spikelets turn tan in the fall
- Wide, flat blades
- Edge of blade has evenly spaced hairs perpendicular to blade
- Nodes at base of hairs still visible when hairs fall off



Texas bluebonnet

(*Lupinus texensis*)



IDENTIFICATION INFORMATION

- Branching, 6-18" plant
- Leaves are light green, velvety, and palmately compound
- Stems topped by clusters of up to 50 blue flowers
- Tips of clusters are white
- Seed pods are velvety and light green to tan



LEGEND		WATER USE		LIGHT			STAGE	
■ ■ ■	LOW	■ ■ ■	SUN	□	■	□	■	
■ ■	LOW-MEDIUM	■ ■	HEAT SHADE	○	■	□	■	
■	MEDIUM	■	SHADE	○	■	□	■	
□	HIGH							

Texas cupgrass

(*Eriochloa sericea*)



IDENTIFICATION INFORMATION

- 3-3' tall bunch grass
- Fine, narrow blades
- Oldest leaf sheaths are white and fuzzy at the base
- Seeds are pressed tightly to branches of the seedhead, appearing to be set in a shallow cup
- Seedhead has a fuzzy appearance



Texas grama [Atascosa]

(*Bouteloua rigidisetra*)



IDENTIFICATION INFORMATION

- 6-16" tall bunch grass
- Spreading, bell-shaped seeds are purplish on the outside and turn straw-colored when dry
- Seeds are distributed along a spike above the blades
- Can be confused with side-oats grama, but seeds more open and bell shaped and plant is much shorter



ONSET	WATER USE	LIGHT	STAGE
■ ■ ■	LOW	SUN	EMPTY COLONET
■ ■ ■	LOW-MEDIUM	PART SHADE	NOT AN EMPTY COLONET
■ ■ ■	MEDIUM	SHADE	
■ ■ ■	HIGH		

Texas wintergrass

(*Missillia leucotricha*)



IDENTIFICATION INFORMATION

- Up to 3' tall grass
- Blades are dark green, stiff, and have short, stiff hairs that feel like sandpaper
- Awns (bristles) up to 4" long, may be straight or bent
- Tip of seed very sharp (will stick to clothing)



Texas yellowstar

(*Lindheimeria texana*)



IDENTIFICATION INFORMATION

- 6-24" tall flowering plant
- Stems and branches are hairy
- Lower leaves are alternate and coarsely toothed, but the upper ones are opposite and smooth on the edges, 2-2.5" long
- Flower heads 1-1.25" across with 5 bright yellow petals, each with 2 prominent veins and indented at the tip



LEGEND		LIGHT		STAGE	
	LOW		SUN		EARLY COLOR/STAGE
	LOW-MEDIUM		PART SHADE		NOT EARLY COLOR/STAGE
	MEDIUM		SHADE		
	HIGH				

White tridens

(*Tridens elbescens*)



IDENTIFICATION INFORMATION

- 1-3' tall bunch grass
- Blades are long, narrow, and roll inward when dry
- The stem is swollen at the base and white to purple
- Seedhead is dense, narrow, and varies from green to purple to white
- Herringbone pattern on seedheads visible from side



Photo credit: Agri-Systems and Forestry Center



Photo credit: Agri-Systems and Forestry Center

OR3081	WATER USE		LIGHT		STAGE	
	LOW	LOW-MEDIUM	SUN	PART SHADE	EARLY-COLORED	NOT AN EARLY-COLORED

NO LIMIT ASSEMBLAGE

Overview:

COMMON NAME	SCIENTIFIC NAME
American basket-flower	<i>Centaurea americana</i>
Big bluestem	<i>Andropogon gerardi</i>
Black-eyed susan	<i>Rudbeckia hirta</i>
Blue flax	<i>Linum lewisii</i>
Bronze-leaf bluestem	<i>Andropogon virginicus</i>
Bushy bluestem	<i>Andropogon glomeratus</i>
Common sunflower	<i>Helianthus annuus</i>
Curlew daisy	<i>Engelmanna pernitens</i>
Gayfeather	<i>Liatris mucronata</i>
Green sprangletop	<i>Leptochloa dubia</i>
Illinois bundleflower	<i>Desmanthus illinoensis</i>
Indian blanket	<i>Gaillardia pultenae</i>
Lanceleaf coreopsis	<i>Coreopsis lanceolata</i>
Lemon mint	<i>Monarda citriodora</i>
Little bluestem	<i>Schizachyrium scoparium</i>
Maximilian sunflower	<i>Helianthus maximiliani</i>
Mealy blue sage	<i>Salvia formicosa</i>
Plains coreopsis	<i>Coreopsis tinctoria</i>
Prairie pansley	<i>Polytaenia nuttallii</i>
Sand love grass	<i>Eriogonum trichoides</i>
Sideoats grama	<i>Bouteloua curtipendula</i>
Silver bluestem	<i>Bothriochloa pacchiaroides</i>
Standing cypress	<i>Ipomopsis rubra</i>
Switchgrass	<i>Panicum virgatum</i>
Texas cupgrass	<i>Eriochloa tenax</i>
Texas wintergrass	<i>Hesperilla leucosticha</i>
White gaura	<i>Gaura lindheimeri</i>
Yellow indiangrass	<i>Sorghastrum nutans</i>

Species descriptions:

American basket-flower

(*Centaurea americana*)



IDENTIFICATION INFORMATION

- 1.5-5' tall flowering plant
- Stout, leafy, much-branched stem
- Flower heads are 4-5" wide, lavender-pink with cream-colored centers
- Straw-colored bracts below flowers make both the buds and dried flowers look like baskets
- The plant looks similar to a thistle but is not prickly



Big bluestem

(*Andropogon gerardii*)



IDENTIFICATION INFORMATION

- 4-8' tall bunch grass
- The seedhead is usually branched into three parts and resembles a turkey's foot
- Fall color is maroonish-tan



LEGEND		LIGHT		WATER USE		STAGE	
	LOW		SUN		EARLY COLONIZER		NOT AN EARLY COLONIZER
	SLOW-MEDIUM		PART SHADE				
	MEDIUM		SHADE				
	HIGH						

Black-eyed Susan

(*Rudbeckia hirta*)



IDENTIFICATION INFORMATION

- 3-2" tall flowering plant
- Bright-yellow, 2-3" wide, daisy-like flowers with dark centers
- The ray florets (look like petals) may have a maroon splotch at the base
- The stems and scattered, oval leaves are covered with dense hairs



Blue flax

(*Linum lewisii*)



IDENTIFICATION INFORMATION

- 18-20" tall flowering plant
- Grows in a clump, stalks often lean at an angle
- Five-petaled flowers are pale blue, 1-1.5" across, and veined in darker blue
- Each stem produces several flowers
- The stem is leafy when the plant is young, gradually losing most of its leaves as it matures
- Leaves are narrow and about 3/4" long



LEGEND		LIGHT		STAGE	
	LOW		SUN		EMPTY COLONIZER
	LOW-MEDIUM		PART SHADE		NOT AN EARLY COLONIZER
	MEDIUM		SHADE		
	HIGH				

Broomsedge bluestem

(*Andropogon virginicus*)



IDENTIFICATION INFORMATION

- 2-5' tall grass
- Seeds evenly distributed along stems
- Seeds have many fine white hairs
- Blades 10-15" long, ~3/8" wide
- Blades pale greenish yellow, turn tawny brown in fall



Bushy bluestem

(*Andropogon glomeratus*)



IDENTIFICATION INFORMATION

- 2-5' tall grass
- Inflorescence clumped at top of stem
- Each set of florets has a long bristle and tufts of feathery white hairs
- Sheaths surrounding inflorescence turn salmon-orange in fall
- Blades blue-green in summer



LEGEND		LIGHT		STAGE	
■ ■ ■ ■	LOW	☀	SUN	□	EMPTY COLONIES
■ ■ ■ ■	LOW-MEDIUM	☀	HEAT SHADE	■	NOT AN EMPTY COLONY
■ ■ ■ ■	MEDIUM	☀	SHADE		
■ ■ ■ ■	HIGH				

Common sunflower

(*Helianthus annuus*)



IDENTIFICATION INFORMATION

- 1.5-8' tall flowering plant
- Stout, branching stem
- Leaves and stem coarsely hairy
- Flower heads are yellow with maroon or brown centers, up to 5" across



Cutleaf daisy

(*Engelmannia peristenia*)



IDENTIFICATION INFORMATION

- Up to 2' tall flowering plant
- Long-stalked, yellow flowers are about 1.5" across
- The 8-10 ray florets (look like petals) are indented at the tip
- Leaves are deeply cleft and toothed, form a large clump at the plant's base



WATER USE		LIGHT		STAGE	
LOW	SUN	EARLY-COLORED	☐	NOT EARLY-COLORED	☑
LOW-MEDIUM	PART-SHADE				
MEDIUM	SHADE				
HIGH					

Gayfeather

(*Liatris mucronata*)



IDENTIFICATION INFORMATION

- 1-3' tall flowering plant
- Stems stiff, upright, unbranched
- Flowers purple and tufted, densely packed along the upper part of the stem
- Leaves narrow and crowded, becoming progressively smaller toward top



Green sprangletop

(*Leptochloa dubia*)



IDENTIFICATION INFORMATION

- 2-3' tall grass
- Bluish-green blades with waxy stems
- Inflorescence is 4-12" long, open and spreading, consists of 5-10 slender branches densely lined with florets



WATER USE		LIGHT		STAGE	
LOW	LOW-MEDIUM	SUN	SHADE	EARLY COLORIZER	NOT AN EARLY COLORIZER
MEDIUM	HIGH	☀️	☁️	🟢	🟡
LEAF					

Illinois bundleflower

(*Desmanthus illinoensis*)



IDENTIFICATION INFORMATION

- 1-3' Tall flowering plant
- Leaves twice divided into many small leaflets
- Leaves fold in strong sunlight or when touched
- Flowers are small, green and white, and arranged in ball-like clusters
- Seedpods are flat, leathery, and twisted around each other in a ball
- Seedpods turn from green to brown as they mature



Indian blanket

(*Gaillardia pūchella*)



IDENTIFICATION INFORMATION

- 1-2' tall flowering plant
- Stems are hairy and usually much-branched
- Stems are mostly leafy near the base
- The flower heads are 1-2" across with a red center and a yellow outer band
- Each petal has 3 teeth at the end
- The centers of the flower heads are brownish red



GREEN		WATER USE		LIGHT		STEMS	
		LOW	LOW-MEDIUM	SUN	PART SHADE	EARLY COLONIZER	NOT AN EARLY COLONIZER
		MEDIUM	HIGH	SHADE			

Lanceleaf coreopsis

(*Coreopsis lanceolata*)



IDENTIFICATION INFORMATION

- 1-2.5' tall flowering plant
- Leaves 3-4" long
- Some leaves are deeply cut, almost forming 3 leaflets, but most are lance-shaped
- Flower heads are yellow with a yellow center, 3-1.5" across
- Ray florets (look like petals) are 4-lobed
- Flower heads occur singly on long, leafless stalks



Lemon mint

(*Monarda citriodora*)



IDENTIFICATION INFORMATION

- 1-2' tall flowering plant
- Stems have several whorls of purple to white flowers
- The lance-shaped leaves have a distinctive citrus scent when rubbed or crushed
- Leaves opposite
- Seedheads form distinctive globe-like clusters spaced up the stem



LEGEND		LIGHT		STAGE	
	LOW		SUN		EARLY COLORER
	LOW-MEDIUM		PART SHADE		NOT AN EARLY COLORER
	MEDIUM		SHADE		
	HIGH				

Little bluestem

(*Schizochyrium scoparium*)



IDENTIFICATION INFORMATION

- 3' tall bunch grass
- Foliage 18-24" high
- Forms very dense mounds up to 1' across
- Slender, blue-green inflorescence stems appear in August, grow to about 1' by September
- Stems turn red or white in fall
- Seeds have white tufts, visible in winter



Maximilian sunflower

(*Helianthus maximiliani*)



IDENTIFICATION INFORMATION

- 3-50' tall flowering plant
- Leaves are long and narrow, up to 50" long
- Leaves are hairy, slightly wavy, often folded lengthwise, slightly toothed and very pointed
- Numerous yellow flowers, centers green to brown
- Flower heads are up to 5"
- Ray florets (look like petals) are deeply veined and slightly toothed on the end



WATER USE		LIGHT		STAGE	
LOW	SUN	EMPTY COLLECTOR	EMPTY COLLECTOR	EMPTY COLLECTOR	EMPTY COLLECTOR
LOW-MEDIUM	PART SHADE	NOT AN EARLY COLLECTOR	NOT AN EARLY COLLECTOR	NOT AN EARLY COLLECTOR	NOT AN EARLY COLLECTOR
MEDIUM	SHADE				
HIGH					

Mealy blue sage

(*Salvia farinacea*)



IDENTIFICATION INFORMATION

- 2-3' tall flowering plant
- Usually forms a mound as wide as the plant is tall
- Leaves long and narrow, grey-green, may be toothed
- Flower stems grow out of clusters of leaves
- Flowers are dark blue to white and tubular, in whorls along the upper stems, creating a 3-5" spike
- The base of each flower is fuzzy



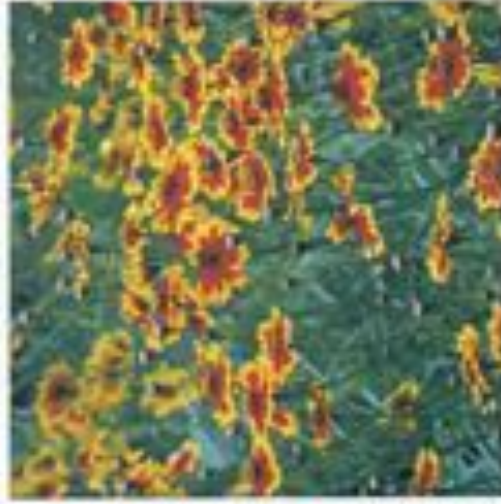
Plains coreopsis

(*Coreopsis tinctoria*)



IDENTIFICATION INFORMATION

- 1-2' tall flowering plant
- Stems branched
- Leaves are pinnately-compound
- Small, abundant yellow flowers have maroon centers
- Ray florets (look like petals) have notched edges



WATER USE		LIGHT			STAGE	
LOW	SUN	EARLY COLLECTOR	PART SHADE	EARLY COLLECTOR	NOT AN EARLY COLLECTOR	
LOW-MEDIUM	SHADE					
MEDIUM						
HIGH						

Prairie parsley

(*Polytaenium nuttallii*)



IDENTIFICATION INFORMATION

- 2' tall flowering plant
- Stems stiff and stout, become dry and brown and remain standing through winter months
- Leaves 1-3" long and nearly as broad, deeply cut, resembling parsley
- Upper leaves usually have 3 lobes, lower leaves 5
- Flowers are small, 1/4" across, greenish-yellow, and grow in umbel-like clusters 2" across



Sand lovegrass

(*Eragrostis trichodes*)



IDENTIFICATION INFORMATION

- Up to 5' tall grass
- Graceful, arching habit
- Inflorescence purplish, open, lacy
- Blades turn rusty-tan when dormant



WATER USE		LIGHT		STAGE	
LOW	SUN	EARLY COLONIZER	LOW	EARLY COLONIZER	NOT AN EARLY COLONIZER
LOW-MEDIUM	PART SHADE	NOT AN EARLY COLONIZER	MEDIUM	NOT AN EARLY COLONIZER	
MEDIUM	SHADE				
HIGH					

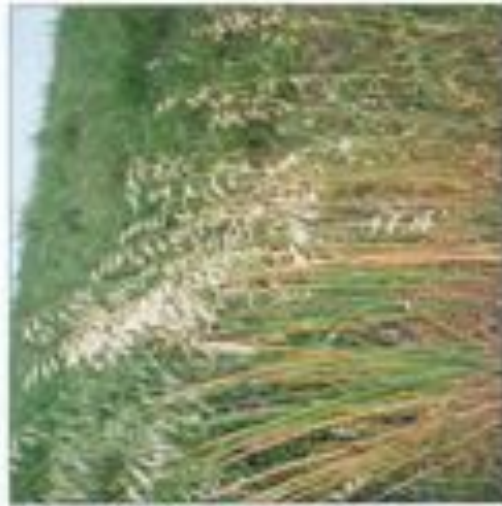
Sideoats grama

(*Bouteloua curtipendula*)



IDENTIFICATION INFORMATION

- 2-3' tall bunch grass
- Stems in erect, wiry clumps
- Purplish spikelets turn tan in the fall
- Wide, flat blades
- Edge of blade has evenly spaced hairs perpendicular to blade
- Nodes at base of hairs still visible when hairs fall off



Silver bluestem

(*Beetriochloa taccaroides*)



IDENTIFICATION INFORMATION

- 2-3' tall grass
- Blades 2-8" long
- Stems round at the base and sometimes branch at nodes
- Tall, papery ligule
- Seedhead is silky white
- Lower stem is purplish during growing season and usually has a ring of white hairs at the nodes



LEGEND		WATER USE		LIGHT			STAGE	
	LOW		SUN		EARLY COLOR/DEEP			NOT AN EARLY COLOR/DEEP
	LOW-MEDIUM		PART SPACE		SPACE			
	MEDIUM							
	HIGH							

Standing cypress

(*Ipomopsis rubra*)



IDENTIFICATION INFORMATION

- Up to 6' tall flowering plant
- Stem stiff and usually unbranched
- Inflorescence is a thick spike of showy, red, tubular flowers with orange or yellow spots inside
- Leaves are deeply divided, giving them a feathery appearance



Switchgrass

(*Panicum virgatum*)



IDENTIFICATION INFORMATION

- 3-6' tall bunch grass
- Seedhead reddish-purple with an open, lacy appearance
- Bright green leaves occur all along the stem
- Leaves turn bright yellow in fall
- Dead leaves persist, becoming curly and tan



WATER USE		LIGHT		STAGE	
LOW	SUN	EMPTY COLONIDER	EMPTY COLONIDER	EMPTY COLONIDER	EMPTY COLONIDER
LOW-MEDIUM	PART SHADE	EMPTY COLONIDER	EMPTY COLONIDER	EMPTY COLONIDER	EMPTY COLONIDER
MEDIUM	SHADE	EMPTY COLONIDER	EMPTY COLONIDER	EMPTY COLONIDER	EMPTY COLONIDER
HIGH		EMPTY COLONIDER	EMPTY COLONIDER	EMPTY COLONIDER	EMPTY COLONIDER

©N2017

Texas cupgrass

(*Eriochloa sericea*)



IDENTIFICATION INFORMATION

- 3-3' tall bunch grass
- Fine, narrow blades
- Oldest leaf sheaths are white and fuzzy at the base
- Seeds are pressed tightly to branches of the seedhead, appearing to be set in a shallow cup
- Seedhead has a fuzzy appearance



Texas wintergrass

(*Nassella leucotricha*)



IDENTIFICATION INFORMATION

- Up to 2' tall grass
- Blades are dark green, stiff, and have short, stiff hairs that feel like sandpaper
- Awns (bristles) up to 4" long, may be straight or bent
- Tip of seed very sharp (will stick to clothing)



WATER USE		LIGHT			STAGE	
LOW	SUN	EARLY COLONIZER	EARLY COLONIZER	NOT AN EARLY COLONIZER	EARLY COLONIZER	NOT AN EARLY COLONIZER
LOW-MEDIUM	PART SHADE	EARLY COLONIZER	EARLY COLONIZER	EARLY COLONIZER	EARLY COLONIZER	EARLY COLONIZER
MEDIUM	SHADE	EARLY COLONIZER	EARLY COLONIZER	EARLY COLONIZER	EARLY COLONIZER	EARLY COLONIZER
HIGH		EARLY COLONIZER	EARLY COLONIZER	EARLY COLONIZER	EARLY COLONIZER	EARLY COLONIZER

White gaura

(*Gaura lindheimeri*)



IDENTIFICATION INFORMATION

- 3-5' tall flowering plant
- Flowers delicate and white, arranged in clusters both at the end of the stem and in leaf axils
- Flowers have four petals and turn pink with age
- Stems branched in upper portion
- Often forms extensive colonies
- Flower fragrance has been compared to cat urine



Yellow indiagrass

(*Sorghastrum nutans*)



IDENTIFICATION INFORMATION

- 3-8' tall grass
- Blades broad, blue-green
- Seedheads large, golden-brown, and plume-like
- Deep orange to purple in fall



WATER USE		LIGHT		STAGE	
LOW	☐	SUN	☐	EARLY COLORIZER	☐
LOW-MEDIUM	☐	PART SHADE	☐	NOT AN EARLY COLORIZER	☐
MEDIUM	☐	SHADE	☐		
HIGH	☐				

UNDESIRABLE PLANTS

Overview:

COMMON NAME	SCIENTIFIC NAME
Bermudagrass	<i>Cynodon dactylon</i>
Johnson grass	<i>Sorghum halepense</i>
King Ranch bluestem	<i>Bothriochloa ischaemum</i> var. <i>songarica</i>
Pigweed	<i>Amaranthus</i> spp.
Rescuegrass	<i>Bromus catharticus</i>
Sowthistle	<i>Sonchus</i> spp.
Western ragweed	<i>Ambrosia psilostachya</i>

Species descriptions:

Bermudagrass

(*Cynodon dactylon*)

IDENTIFICATION INFORMATION

- Low turfgrass
- Spreads with runners
- Flowers through growing season
- Runners and stems branched

RECOMMENDED TREATMENT

- Spray repeated glyphosate application



Johnson grass

(*Sorghum halepense*)

IDENTIFICATION INFORMATION

- 3-4' tall bunch grass
- Prominent white midvein on blade, resembles corn leaf blade
- Branches of inflorescence loose, reddish, and arranged in whorls
- Flowers through the growing season

RECOMMENDED TREATMENT

- Hand pull to remove roots and rhizomes
- Spray repeated glyphosate application



King Ranch bluestem

(*Bouteloua ischaemum* var. *sougarica*)

IDENTIFICATION INFORMATION

- 1-2' tall bunch grass
- Blades have a cluster of white hairs at the base
- Flowers through growing season

RECOMMENDED TREATMENT

- Hand pull to remove roots
- Spray repeated glyphosate application



Pigweed

(Amaranthus spp.)

IDENTIFICATION INFORMATION

- Height varies by species
- Red stalks with bunches of tiny yellow-green flowers

RECOMMENDED TREATMENT

- Hand pull to remove roots
- Spray repeated glyphosate application



Rescuegrass

(Bromus catherinus)

IDENTIFICATION INFORMATION

- Up to 1' tall grass, usually 6-12"
- Inflorescence is large, openly branched, and nodding spikelets of flowers are flattened and yellow
- Stems unbranched
- *Need another picture!

RECOMMENDED TREATMENT

- Glyphosate application on seedlings, young plants, or when flowering



Photo: L. Hunsaker, University of Utah, Salt Lake City, Utah

Photo: L. Hunsaker, University of Utah, Salt Lake City, Utah

Sowthistle

(*Sonchus* spp.)

IDENTIFICATION INFORMATION

- Stems produce milky white liquid when broken
- Leaves lobed
- Base of leaves clasp the stem
- Flowers yellow, similar to dandelion
- Seeds have white tufts, also similar to dandelion



Western ragweed

(*Ambrosia psilostachya*)

IDENTIFICATION INFORMATION

- 3-2' tall plant
- Stems pale green, hairy
- Leaves dissected, lobes pointed
- Many small, drab yellow-green flowers that resemble downturned lampshades

