



**Officers, 2009**

President: Alvie Vesperman  
Vice President: Donna Hebert  
Treasurer: John Milligan  
Secretary: Julia Cosgrove

**Committee Chairs**

Go Texan Beds: Jennifer Corzine &  
Donna Hebert  
Ext. Office Beds: Julia Cosgrove & John  
Milligan  
Communications: Helen Quinn  
Children's: Jennifer Corzine & Sandy  
Robillard  
2010 Seminar: Sandy Robillard  
Fundraising: Julia Cosgrove  
Admin: Carolyn Guillotte  
Class: Jennifer Corzine  
Painting Texas w/wildflowers:  
Edmond McGee  
Co-op: Fred Vesperman

**Texas AgriLife Extension:**

Rodney Finch : County Agent  
Barbara Szymczak: Secretary  
\*\*\*\*\*

**Newsletter Editor:**

Helen Quinn  
Articles, photos and other  
Information due by 27<sup>th</sup> of each  
month. Send to:

[hortiq@embarqmail.com](mailto:hortiq@embarqmail.com)

**Website:**

[www.grimesmastergardeners.org](http://www.grimesmastergardeners.org)

# HOE! HOE! HOE!

## Grimes County Master Gardeners Newsletter VOLUME 5, ISSUE 9, Septembert 2009

---

### Current projects

#### New:

- \*compilation of fact sheet of recommended vegetable varieties for Grimes County. Please complete and return the questionnaire to Helen by **August 31st**, listing the best varieties and days to harvest.
- \*Introduction of fact-photos section on website, starting with insects by Sandra Williams .

#### \*Fall Vegetable Seminar

Sponsored by GCMG  
September12, 2009

#### Ongoing:

- \*Rose beds and landscaping at Go Texan Building, Fairgrounds.
- \*Landscaping at Texas Agri-Life Extension Office.
- \*Painting Texas with Wildflowers



## Vegetable Planting Guide

9/1- 10/20 Beets

9/1 – 11/30 Radish

9/1 – 10/15 Chinese Cabbage

9/5 – 11/25 Spinach

9/10 – 11/15 Broccoli, Brussels Sprouts

9/10 – 11/5 Lettuce, Head

9/15 – 11/30 Lettuce, Leaf

9/15 – 12/31 American Cabbage

9/15 – 11/30 Carrots

9/20 – 10/31 Cauliflower, Celery

9/20 – 11/30 Kale, Kohlrabi



Kohlrabi – the “sputnik plant”

*Try some new vegetables this fall – something not readily available in the produce section at the supermarket!*

## MEETING SCHEDULE 2009

Regular meetings are held on the 2<sup>nd</sup> Tuesday of each month at the Go Texan Building, Grimes Co. Fairgrounds, 9.00 am., except as noted below. Two evening meetings held at members' homes, and two Saturday field trips, enable members who work to participate.

- Sept 12 Reg. Monthly Meeting – Go Texan, program on Mushrooms  
Dr. Brian Shaw
- Oct 17 Saturday meeting at The Gergeni's, noon, pot-luck
- Nov 10 Mtg, Go Texan : speaker will be Barbara Volk-Tunnell, Ag Sci  
Teacher at Bryan High on Holiday Arrangements
- Dec ? Christmas Party/meeting

### HEADS UP!

**GCMG & AGRILIFE EXT. WILL HOLD A FALL VEGETABLE SEMINAR AT THE FAIRGROUNDS. THIS WILL BE A HALF-DAY EVENT, WITH SPEAKERS AND EXHIBITS/VENDORS, REFRESHMENTS. ALL MEMBERS ARE INVITED, AND WE HOPE EVERYONE WILL BE PRESENT, WEARING GCMG TEE-SHIRTS OF COURSE!  
8.30 – 12.30 LIONS' CLUB BUILDING  
SEPTEMBER 12TH, 2009**

\*\*\*\*\*

### **FREEZE YOUR SURPLUS JALAPENOS FOR LATER USE**

**By taking a few precautions during preparation, you can easily freeze jalapeños for use in future cooking, jellies, salsas, etc. Wear kitchen gloves if you have sensitive hands, wear glasses in case juice splashes into your eyes, and don't stand over the steam in the blanching pot!!**

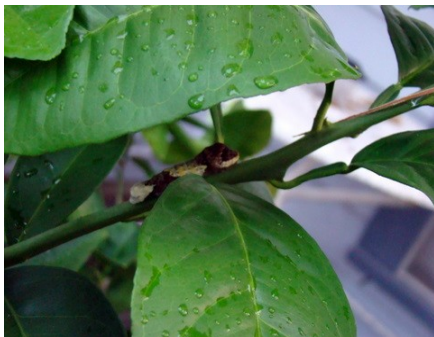
**Pick, wash, remove top & stem, cut in half and remove seeds/membranes. Drop in boiling water for one minute, plunge into ice cold water until cool. Drain, place in freezer bags or containers. Will keep up to 12 months.**

## 2010 GCMG TRAINING CLASS

The Committee, headed by Jennifer and Alvie, met on August 25<sup>th</sup> to produce a tentative schedule for the 2010 training class. Classes will start on January 26<sup>th</sup> and run for 13 weeks, ending April 20<sup>th</sup>. Once again we expect the classes to be held at the Go Texan Building at the Fairgrounds. We will have applications available at the September 12 Fall Vegetable Seminar, and hopefully we will have confirmed instructors/dates for publication in the October newsletter.

---

### Giant Swallowtail Caterpillars on Orange Tree



## ON THE CALENDAR – SEPTEMBER/OCTOBER/NOVEMBER

- Sep 8 GCMG meeting at Go Texan – program on Mushrooms by Dr. Brian Shaw, short business meeting
- Sep 14-15 Landscape Design School, Christ United Methodist Church, CS
- Sep 17-20 Rockport-Fulton Hummingbird Festival  
<http://www.rockporthummingbird.com/2009newsletter.pdf>
- Sep 22 First Day of Autumn (will it be cooler????)
- Oct 3 Rainwater Harvesting seminar, Coufal Prater, time tba
- Oct 3, 4 Scout instruction project, details tba
- Oct 15-16 Garden Study School, Hort. Lab, TAMU
- Oct 17 GCMG at Vicki's, noon. Potluck
- Oct 17 Madisonville Mushroom Festival 10-5 for non-gardening fun!
- Oct 30 Treats on the Street – details tba



“When all is said and done, you get about as much food out of an artichoke as you do from licking 40 or 50 postage stamps.”

Miss Piggy

## HUMMINGBIRDS KEEP OUT!!!



The word *pineapple* in English was first recorded in 1398, when it was originally used to describe the reproductive organs of conifer trees (now called pine cones.) When European explorers discovered this tropical fruit, they called them *pineapples* (term first recorded in that sense in 1664) because of their resemblance to the pine cone.

The natural (or most common) pollinator of the pineapple is the hummingbird. Pollination is required for seed formation; the presence of seeds negatively affects the quality of the fruit. In Hawaii, where pineapple is cultivated on an agricultural scale, importation of hummingbirds is prohibited for this reason.

Certain bat-pollinated wild pineapples, members of the bromeliad family, do the exact opposite of most others by opening their flowers at night and closing them during the day.

**HUMMINGBIRD FESTIVAL IN  
ROCKPORT, TX  
SEPTEMBER 17 - 20**