

# Woolly Bear Caterpillar

Prepared by  
Camille Goodwin, MG 2008

Texas AgriLife Extension Service  
Galveston County Office  
Dickinson, TX 77539



Educational programs of the Texas AgriLife Extension Service are open to all people without regard to race, color, sex, disability, religion, age, or national origin.

The Texas A&M System, U.S. Department of Agriculture and the County Commissioners Courts of Texas cooperating.



FIG. 1

Type Pest: chewing insect (*Hypercompe scribonia*)

Type Metamorphous: complete (egg, larva, pupa, adult stages)

Other Common Names: giant leopard moth

Period of Primary Occurrence:

- Caterpillars abundant in Spring and Fall
- Adult moths common under lights in mid-summer (can be two generations per year)

Plants Affected:

- Dandelion, plaintain and a variety of low-growing weeds and grasses. Will sometimes, but rarely attack ornamentals and food crops

Identifying Characteristics of Insect Pest

- Adults have a 3" wingspan, white with black open-circular spots on forewings and a metallic blue abdomen with orange markings
- Caterpillars grow about 3", and have fuzzy tufts of stiff black hair of equal length radiating around its body with red bands between body segments

Description / Symptoms

- Usually not considered a pest but are abundant enough to be noticed
- Does not sting as with some hairy caterpillars

Best Management Practices (BMP)

**CHEMICAL CONTROL**

- Not required

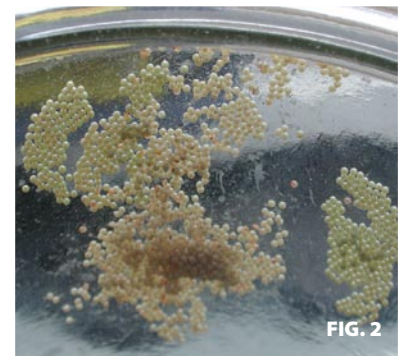


FIG. 2



FIG. 3



FIG. 4



The information given herein is for educational purposes only. Reference to commercial products or trade names is made with the understanding that no discrimination is intended and no endorsement by the Texas AgriLife Extension Service is implied.

Use pesticides only according to the directions on the label. Individuals who use chemicals are responsible for ensuring that the intended use complies with current regulations and conforms to the product label. If the information does not agree with current labeling, follow the label instructions. The label is the law.

Always remember to read and heed six of the most important words on the label: "KEEP OUT OF REACH OF CHILDREN"

All images are copyrighted by the Galveston County Master Gardener Association (GCMGA). These images are for educational use only and may not be used for commercial or non-educational purpose without written permission from GCMGA.

**Texas AgriLife Extension Service • Galveston County Office • 5115 Highway 3 • Dickinson, TX 77539  
281-534-3413 • <http://aggie-horticulture.tamu.edu/galveston>**