

Two-Striped Walkingstick

Prepared by
Camille Goodwin, MG 2008

Texas AgriLife Extension Service
Galveston County Office
Dickinson, TX 77539



Educational programs of the Texas AgriLife Extension Service are open to all people without regard to race, color, sex, disability, religion, age, or national origin.

The Texas A&M System, U.S. Department of Agriculture and the County Commissioners Courts of Texas cooperating.

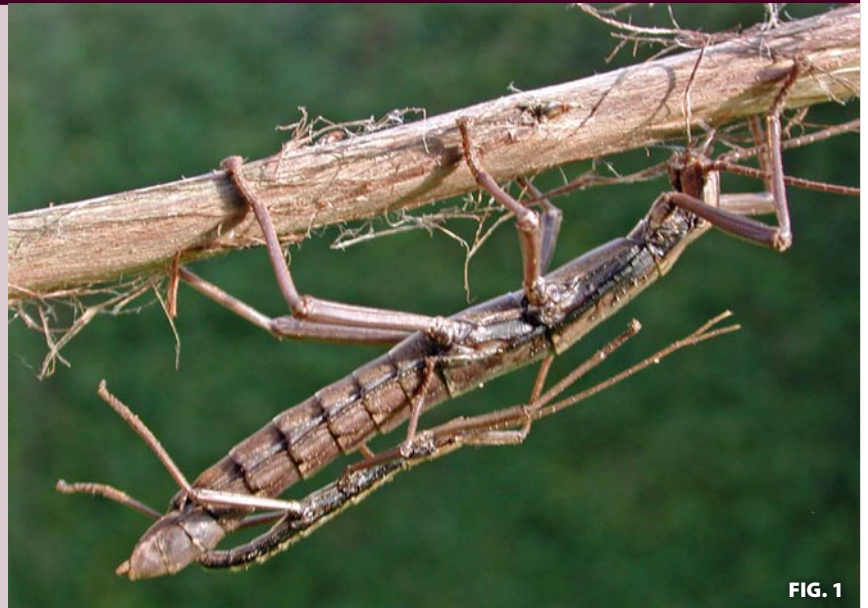


FIG. 1

Type Pest: chewing insect (*Anisomorpha buprestoides* Stoll)

Type Metamorphous: simple (egg, nymph, adult stages)

Other Common Names

- For walkingsticks in general: walking stick, devil's riding horse, prairie alligator, stick bug, witch's horse, devil's darning needle, and musk mare

Period of Primary Occurrence: late summer and fall

- Most abundant in late summer and fall when females are laying their eggs

Identifying Characteristics of Insect Pest

- Adult bodies are long and wingless and resemble sticks or twigs (Fig. 1)
- Females average 2½" length, while the males are smaller and more slender, averaging 1½"
- They have three conspicuous longitudinal black stripes down their bodies (Fig. 2)
- They are slow moving, will sway/vibrate in the breeze to look like vegetation
- Their first line defense is to look like a dead stick, so are sometimes hard to spot
- They are often seen with males attached to the larger female

Description / Symptoms

- They are herbivorous and feed on leaves of trees and shrubs including crepe myrtles, roses, oak, ligustrum, and rosemary
- They generally feed at night
- They have chewing mouthparts

Medical Interests

- This species can squirt a strong-smelling defensive "acidic" spray that is painfully irritating to the eyes and mucous membranes
- They can spray as far away as a foot in distance, so you should handle them carefully and away from your face



FIG. 2



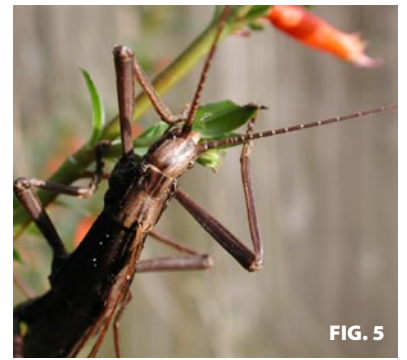
FIG. 3



FIG. 4

Best Management Practices (BMP)

- Control is not normally required, but they can reproduce rapidly to cause moderate plant damage



The information given herein is for educational purposes only. Reference to commercial products or trade names is made with the understanding that no discrimination is intended and no endorsement by the Texas AgriLife Extension Service is implied.

Use pesticides only according to the directions on the label. Individuals who use chemicals are responsible for ensuring that the intended use complies with current regulations and conforms to the product label. If the information does not agree with current labeling, follow the label instructions. The label is the law.

Always remember to read and heed six of the most important words on the label: “KEEP OUT OF REACH OF CHILDREN”

All images are copyrighted by the Galveston County Master Gardener Association (GCMGA). These images are for educational use only and may not be used for commercial or non-educational purpose without written permission from GCMGA.

**Texas AgriLife Extension Service • Galveston County Office • 5115 Highway 3 • Dickinson, TX 77539
281-534-3413 • <http://aggie-horticulture.tamu.edu/galveston>**