

Belinda's Dream

Caldwell Pink

Carefree Beauty

Cecile Brunner

Ducher



Duchesse de Brabant

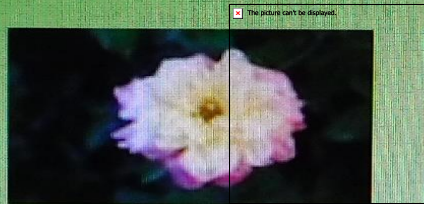
Else Poulsen

Georgetown Tea

Knock Out

La Marne

Marie Daly



Mme. Antoine Mari

Monsieur Tillier

Mrs. Dudley Cross

Mutabilis

New Dawn

Perle d'Or



Rev d'Or

Sea Foam

Souvenir de St. Anne

Spice

Marie Daly



Earth-Kind Roses

Texas AgriLife Extension Service

What is Earth-Kind® Landscaping?

- Earth-Kind® landscaping is an educational program developed by Texas A&M AgriLife Extension Service. The program promotes the use of proven techniques to provide maximum garden and landscape enjoyment, while also preserving and protecting the environment.
- This landscaping combines the best of organic and traditional practices to create a new approach to high-quality and productive landscapes and gardens while protecting the environment. The goals of the Earth-Kind® landscaping program include:
 - Water conservation
 - Reduction of fertilizers and pesticides
 - Landscaping for energy conservation
 - Reduction of landscape wastes entering landfills

What is an EarthKind® Rose?

- **OFFICIAL DEFINITION:** a special designation given to select rose cultivars by the Texas A&M AgriLife Extension Service through the Earth-Kind® landscaping program. It is based on the results of extensive research and field trials, and is awarded only to those roses demonstrating superior pest tolerance and outstanding landscape performance.
- **UNOFFICIAL DEFINITION:** nice roses that are really easy to grow in your landscape with only basic care and consideration.

HOW TO BRUTILIZE A ROSE BUSH

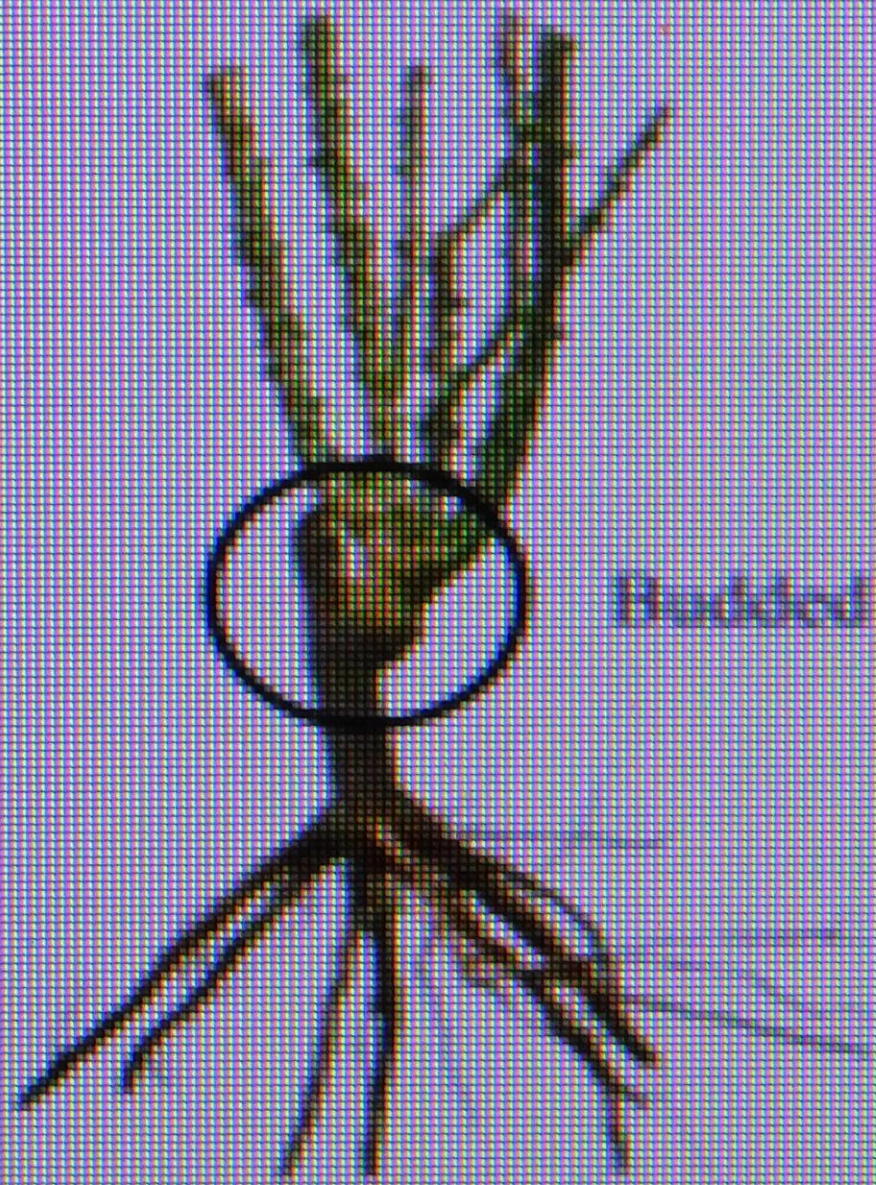
- Plant in alkaline clay soil (8.0 to 8.4) with no amendments!
- Never fertilize!
- Ignore disease and insects and never spray them!
- Never prune or deadhead (**except** to remove dead wood)!
- Supplement water during the first year, then none!
- **One act of kindness was allowed – 4 inches of mulch.**
(full sun and proper spacing were considered)

468 bushes (117 cultivars) were planted in 1997 and in 2002 only 11 cultivars were selected as the first Earth-Kind[®] Roses.

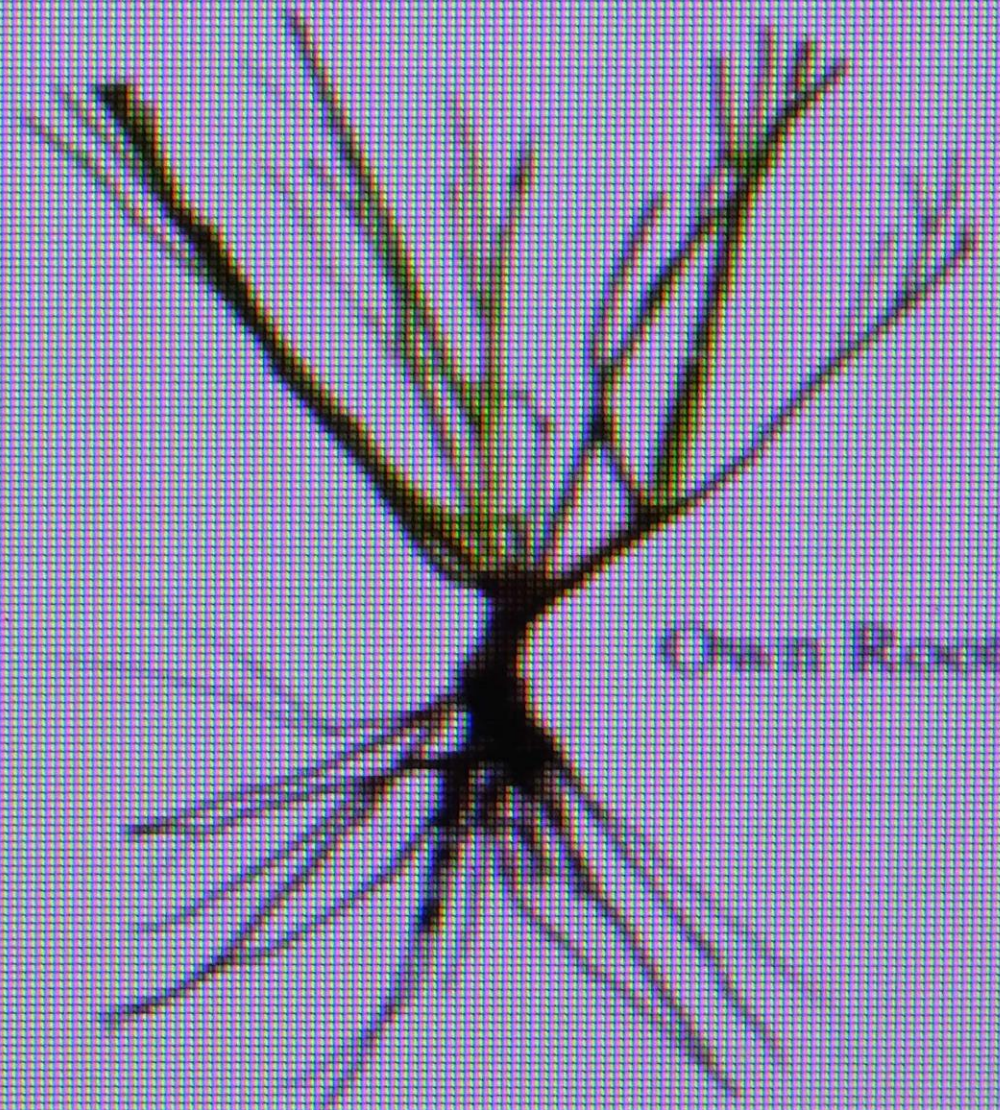


Earth Kind® Rose
And
Display Rose Garden

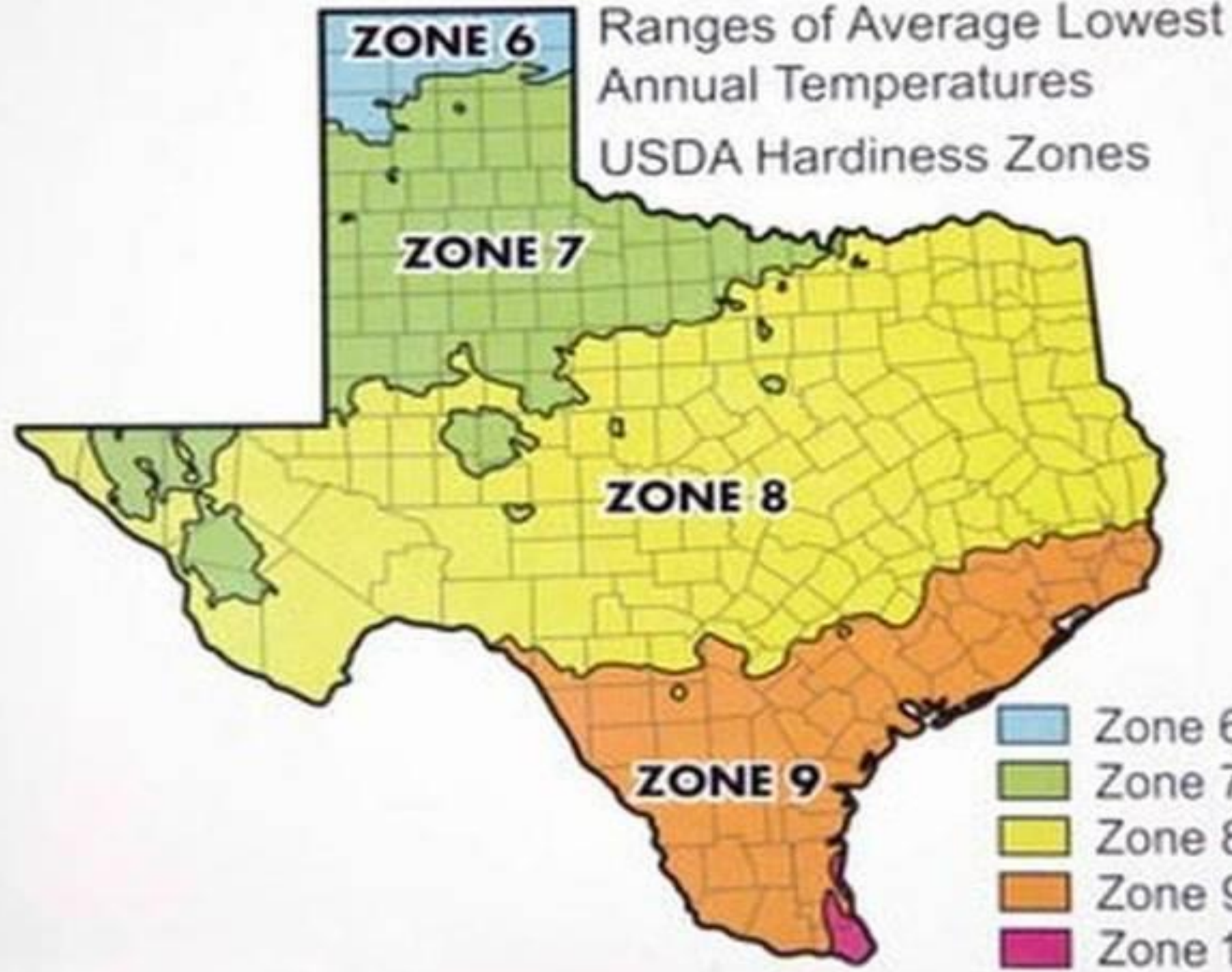
Bed C2



Taproot



Fibrous Root



23 cultivars:

- 1 Bourbon
- 1 Floribunda
- 1 Noisette
- 1 Large flowered climber
- 1 Found
- 3 China
- 4 Shrub
- 5 Tea
- 6 Polyantha

Fragrant:

Yes: 16

None: 7

.....

Color:

Pink/blend: 17

White: 3

Red: 1

Apricot blend: 2

Souvenir de St. Anne's 1950







Else Poulson 1924









Caldwell Pink
Found





New Dawn

1930







Spice Found-no date











Reve d'Or 1869









Mutabilis 1894









Ducher 1869









Madame Antoine Mari 1901







Monsieur Tillier 1891









Mrs. Dudley Cross 1907





Georgetown Tea - Found







