

# The Blooming Bell

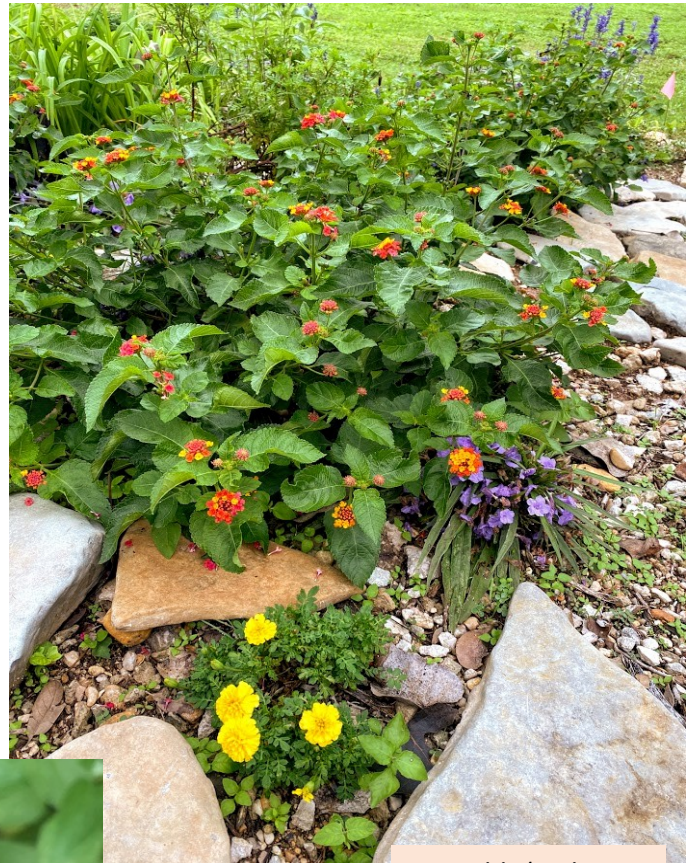
October 2020



## IN THIS EDITION

Calendar	2
President's Corner	3
Mexican Honey Wasp	4
Wayne's Page	5
Posting Hours in VMS	6
Advanced Training Scholarships	8
What's Happening	9-24
Firewise Landscaping	25-27
Fall Webworms	28-30
Sharing Is Caring	31-38
What's Coming Up!	39
Announcements	46
Upcoming Events	50

## Flowers of the Month Marigold and Cosmos



Marigolds (with Lantana and Mexican Petunias) submitted by Crystal Mears



Cosmos submitted by Jan Upchurch

# October 2020

Sun	Mon	Tue	Wed	Thu	Fri	Sat
				1	2	3
4	5	6	7	8	9	10 <b>GARDEN GARAGE SALE</b>
11	12 National Farmers Day	13	14 General Membership Online Business Meeting  Nat'l Dessert Day	15	16 Volunteers Needed—see pg 39  World Food Day	17
18	19	20	21 General Membership Online Education	22	23	24 <b>ASK A MASTER GARDENER</b>
25 Mother In-Law Day!	26	27	28 Board of Directors Mtg  9 AM	29	30	31 

**Happy Halloween!**

To help prevent the spread of COVID-19, please continue to practice social distancing, wear a mask, and as much as possible **STAY AT HOME!** We will see you all soon.

Remember to record volunteer service hours and education hours each month.



# President's Corner

Glenn Melton

---



I hope everyone is doing well and staying safe. I'll bet everyone is enjoying this fall weather and getting landscapes ready for the winter months. This is just a wonderful time of the year in Central Texas. The heat is finally gone and in just a few short weeks lawn mowing will be over until next year.

As of this writing I have no update from the Extension Office concerning whether we will have an in-person Christmas Party this year. However, the Expo Center Assembly Hall has been reserved for Dec 9<sup>th</sup> in the event County Covid-19 restrictions are relaxed. I will let you know as soon as I am able to speak further with the office staff.

I would like to take this opportunity to speak with everyone about our upcoming Spring Plant Sale scheduled for next March. We have asked our membership to grow plants at home for sale at this event and this might prove stressful to some members. Let us start off this discussion by acknowledging Kathy Love for taking up the responsibility of organizing this event. She has a wealth of experience and has already put several procedures in place to ensure its success. For example, soil is available at the Belton Feed Store for anyone needing it for plant propagation, and members have been asked to bring in clean pots for anyone who may need them. Yes, growing plants from seeds or cuttings can be a challenge, but I would like to suggest a more successful and easier way to propagate, division. This is a very simple and almost fool-proof way of growing perennials for the plant sale and Fall and early Winter in Central Texas is the ideal time to start this task. I'm quite sure we all have an abundance of perennials in our flower beds and this would be a good way to clean them up and help out our organization at the same time. Don't remember exactly how to perform division? Anyone on the Propagation Committee would be happy to go over it with you and refresh your memory. Here are a few links I hope everyone will find helpful:

<https://www.centraltexasgardener.org/resource/october-to-do-list/>

<https://counties.agrilife.org/harris/files/2011/05/perennials.pdf>

<https://web.extension.illinois.edu/perennials/fall.cfm>

Please remember that we must be careful not to propagate a patented plant. Hopefully, we will have a website available soon that will help you identify whether or not a plant is patented. Some plants that are easy to divide include: Fall Aster, Hosta, Monarda (Bee Balm), Ruellia (Mexican Petunia), Greg's Blue Mist Flower, and many others. I have not confirmed whether these particular plants are patented, so you might try to "Google" to see if they are patented. As long as we do not violate any patent laws, we can grow enough plants to make our sale a huge success. I am asking everyone to grow whatever they can and contact Kathy if you have any questions about what plants are needed most. Thank you in advance for your help and support.

One last thing. A review of VMS shows that many members are lacking significantly in the number of educational and/or service hours logged into the system. Either the hours have yet to be entered or have not yet been earned. I urge everyone to update entries in VMS if they have not done so recently and keep in mind that time is running out to obtain the required hours. As everyone knows, the requirement for 6 educational and 12 service hours each year has not been reduced. Time is short so please give this urgent matter your immediate attention. Thanks again for your support. Glenn

## Mexican Honey Wasp

by Wizzie Brown

The Mexican honey wasp, *Brachygastra mellifica*, is a neotropical wasp that can be found in North and South America. Within North America, it can be found in Arizona and Texas.

Honey wasps are small, about 1/4 – 1/3 of an inch. These social wasps have teardrop-shaped abdomens striped in yellow and black, rusty wings, and a dark head and thorax. Like other wasps, female honey wasps are capable of stinging and will do so to protect the colony or if they are provoked.



Mexican honey wasps create a small, about 18 inches in size, basketball to football shaped nest out of a paper-like material. These nests are typically located in trees or shrubs, often higher up where they won't be disturbed. Nests can be home to 3,000- 18,000 wasps. Unlike honey bees, Mexican honey wasps can have multiple queens in each colony. Clusters of colonies can be common in some areas and nests last about 3 years before they are abandoned.

These wasps are pollinators and collect nectar and pollen to feed larvae in the colony. Adult wasps feed on fluids and, sometimes, exoskeletons of other insects, especially Asian citrus psyllids when they are available. These wasps create and store honey like honey bees to survive through the winter.

If you need to manage these wasps, then you should contact a professional that has proper protective equipment, such as a bee suit.

For more information or help with identification, contact Wizzie Brown, Texas A&M AgriLife Extension Service Program Specialist at 512.854.9600. Check out my blog at [www.urban-ipm.blogspot.com](http://www.urban-ipm.blogspot.com)

This work is supported by Crops Protection and Pest Management Competitive Grants Program [grant no. 2017-70006-27188 /project accession no. 1013905] from the USDA National Institute of Food and Agriculture.

*The information given herein is for educational purposes only. Reference to commercial products or trade names is made with the understanding that no discrimination is intended and no endorsement by Texas A&M AgriLife Extension Service Extension or the Texas A&M AgriLife Research is implied.*

*The Texas A&M AgriLife Extension Service provides equal access in its programs, activities, education and employment, without regard to race, color, sex, religion, national origin, disability, age, genetic information, veteran status, sexual orientation or gender identity.*

## Wayne's Page



### Common Diseases That Affect Tomatoes

By Wayne Schirner

I have seen it written that tomatoes are the favorite crop grown by home gardeners. Last month I wrote about issues with tomatoes that are not disease related. I have found a number of links to articles that discuss the common diseases that affect tomatoes. I am providing links to these articles instead of reiterating the information primarily because these articles contain photos of many of the diseases and I have found photos to be immensely helpful in identifying what disease is affecting your plants. Now that the weather has cooled down, I am anxiously awaiting the flowers on my tomato plants to be pollinated and bear fruit. Happy gardening.

This first link is to a website that has information on pretty much every tomato disease, and even some of the conditions I wrote about last month. If you only bookmark one site, this is the one:

<https://www.seminis-us.com/resources/disease-guides/tomatoes/>

This link only discusses fungal diseases, but it has great photos and discusses some of the control measures the home gardener can use against these diseases:

<https://njaes.rutgers.edu/fs547/>

Here's a link to a fact sheet from the Oklahoma Cooperative Extension Service. This one mentions a few more fungal diseases and is Part I in a series on tomato diseases:

<https://extension.okstate.edu/fact-sheets/common-diseases-of-tomatoes-part-i-diseases-caused-by-fungi.html>

This is Part II in the series from the Oklahoma Cooperative Extension Service that discusses non-fungal diseases of tomatoes:

<https://extension.okstate.edu/fact-sheets/common-diseases-of-tomatoes-part-ii-diseases-caused-by-bacteria-viruses-and-nematodes.html>

This is Part III in the series from the Oklahoma Cooperative Extension Service that discusses non-infectious diseases of tomatoes. I wrote about most of these last month, but I wanted to provide a link that you can bookmark:

<https://extension.okstate.edu/fact-sheets/common-diseases-of-tomatoes-part-iii-non-infectious-diseases.html>

I apologize for so many links from Oklahoma, but other than climate zone, their issues with tomatoes are the same as what we experience here in Texas.


Happy gardening.



## Posting Hours and Contacts in VMS

A few months ago, we wrote about acquiring education and service hours when a neighbor, family member, friend or even a complete stranger asks you a horticulture question in your role as a Master Gardener. To encourage better reporting of all the contacts we make as Master Gardeners, we are sharing with you some VMS entry recommendations.

First, keep track of how long you spent researching the question at hand and enter your research time as follows:

<b>Event Description</b>	
<b>LI</b>	
<b>Apply to Project</b>	Education <b>REQUIRED</b>
<b>Miles Driven</b>	
<b>Volunteer Hours</b>	
<b>Continuing Education</b>	

Research is always **Continuing Education** (you are, after all educating yourself so you can educate your contact) so please enter that time correctly. Do not enter anything in the **Population Served** boxes when making **Continuing Education** entries.

Then enter your service hours like this; in the **Event Description**, name the contact, the question and how they contacted you e.g. email, telephone, etc.

<b>Event Description</b>	
--------------------------	--

In this example, after filling in the date, pull down the list of projects and choose *Home or site visits*. If you are responding via email, choose *E-mail questions – Ask a Master Gardener* (we also use this project description if responding to someone via text—happens all the time these days). We have even added *Facebook – Ask A Master Gardener* so if you help out a Facebook friend with a horticulture question in your Master Gardener role, use that project description. If you are stopped at the feed store or any other location and asked a horticulture question because you’ve run into a friend who knows you are a Master Gardener, or the store sends someone over to you because they know you are a Master Gardener (happens to us frequently at the feed store), or you have on your MG badge and are approached with a gardening question, those contacts count too. We do not have a specific project for this but you should always take the opportunity to share your horticultural education in any of these instances so choose one of the above projects--we usually choose *Home or site visits* when recording these contacts but use your judgment on this one.

## Posting Hours and Contacts in VMS

Next you enter your Volunteer Hours. We bet you are saying to yourself, “It didn’t even take an hour.” Let’s say, your neighbor asks you a question on the telephone. That is your initial contact so choose the project description **Telephone call/Walk in** and enter the time you spent in the **Volunteer Hours** box. If you were able to answer the question in that one contact, you make only that entry to record it. If your initial telephone call contact takes five to fifteen minutes, your volunteer hours for this entry will be .25 (please use only quarter hour entries, e.g. .25, .50, .75, 1, 1.25, etc.)

But say it is a question that needs research and follow-up. So you do your research then follow-up this telephone call question, let’s say, by providing material or internet links via email. That then becomes a second contact made via *Email Questions-Ask a Master Gardener*.

If it takes more than one telephone call to complete the contact, you should use your judgment as to whether to record more than one contact. On the help desk we often take a call and advise the caller we need to do some research to answer. When we call back with our answer it is recorded as just one contact in VMS. However, we also sometimes get a caller’s question answered then they think of another question and call back either that or another day. In that instance, even though it is the same person, there are two different topics so we make two entries for that caller (we are getting quite a few “regulars” on the help desk these days). For **Home or Site Visits**, perhaps with a neighbor, that take more than one trip to complete (doesn’t happen often but if it does), again we advise that you use your best judgment as to whether to make just one entry or two or more, but if the visit occurs on different days, we recommend two contact reports, even if it is the same concern.

Finally, please be sure to mark the **Population Served** section, e.g. Male Adult, Male Youth, Female Adult or Female Youth and then fill in the ethnicity box that applies. By marking the **Population Served** boxes you allow us to electronically generate a contacts spreadsheet for our monthly report that goes to Lyle, the Commissioner’s Court and Lyle’s AgriLife District headquarters. Your entry in any category will show up on the spreadsheet report that VMS generates for that category, but when no **Population Served** info is marked, we just have to use our imagination and add **Population Served** ourselves.

As always, we are here to help you with any questions you may have on entering your hours into VMS. Keeping accurate records of our horticultural work in the County allows us to promote the work of the Texas and Bell County Master Gardening Associations, so important to our mission.

Happy Gardening,

**Teri Marceau & Kathy Love**

## **Advanced Training Scholarship Money Still Available for 2020**

Gail Koontz

A reminder to all active certified Master Gardeners that money is still available for those who have taken or plan to enroll in an Advanced Training class – in person or virtual.

Our purpose in providing this financial assistance is to assist with the mission of Bell County Master Gardener Association in providing high quality, research based, horticultural education to the residents of Bell County and the state of Texas.

We currently have a number of active members who have received one or more specialist (now called advanced training) certifications. We continue to receive requests for speakers on various topics and requests from citizens for advice on horticultural issues. So we would like to be able to add your name to these lists.

Advanced Training entails not only a commitment of time, but a significant financial commitment as well. Registration for the training ranges from \$125 to \$250. Additionally, travel, lodging and meals are all costs incurred by the individual receiving the training IF attending in person. It appears the virtual class registration fee is less and there are no travel, lodging and meals to pay.

Advanced Training Scholarships would provide reimbursement of the registration cost up to \$250 once the member has completed the 20 service hours to be certified and provided documentation signed by Lyle Zoeller. And this is in addition to the \$50 currently reimbursed by Texas Master Gardener Association.

In 2019 Glenn Melton and Carol Morisset were reimbursed their registration fees for the Advanced Trainings they attended and then completed the required 20 hour service project. This year we've reimbursed Pat Johnson and look forward to reimbursing more.

Here are the guidelines:

A committee (Gail Koontz, Carol Morisset, Stacye Parry, Walter Ponder, Bill Walker) will receive-approve your applications, oversee distribution of funds, and evaluate the program periodically. This year we are meeting by email.

Applicants must be certified and active in Bell County Master Gardener Association.

Applicants will complete a short application to include a statement describing how they will use the training to assist with the mission of the Association.

Application should be submitted to Gail Koontz prior to attending the Advanced Training.

Scholarships will not be retro-active.

If you have already attended/are currently attending Advanced Training in 2020, you may still apply. The applications with instructions are on VMS and our website and can be submitted to Gail Koontz.



# ***What's Happening...***

## **Killeen Municipal Court Community Garden**

**September 5, 2020**

**Photo and reporting by Randy Brown**

85 lbs harvested by Kathy and Randy Brown and donated to  
Friends and Families in Crisis



# ***What's Happening...***

## **Killeen Municipal Court Community Garden**

**September 12-14, 2020**

Photos and reporting by Randy Brown

Busy time of Fall plantings at KMCCG. Bob Gordon and Paul Carter planted Red and Green Cabbage Transplant on 9-12. Had a crew return 9-14 to plant more cabbage, broccoli, Transplants; cauliflower, Beets, Turnips and Kohlrabi seeds.



# What's Happening...

## Killeen Municipal Court Community Garden

September 12-14, 2020

Photos and reporting by Randy Brown



Kathleen planting cabbage 9/14



Randy busy planting



harvesting okra 9/14

# What's Happening...

## Temple College Phi Theta Kappa Garden 9/18/2020

By Marjorie Gillmeister

Fall gardening at the college with PTK students and BCMG members Marjorie Gillmeister, Charlotte Nunnery, Carla Harmon, Janice Smith, Sandra Carney and Mike Butts. Students planted seeds in eggshells in August and transplanted seedlings into the garden, direct seeded spinach, lettuce, carrots, beets, radishes, weeded and prepped the no-dig-garden beds on September 18th. The abundance of rain settled all the eggshell transplants of a variety of kale, lettuces, cabbage and mustard spinach. The radish and beet seedlings emerged after only 4 days since the time of sowing. We look forward to a bountiful season and harvest for the school's leopard food pantry to continue providing fresh food for the home insecure students on campus.

Marjorie Gillmeister will be presenting the wonderful journey it has been this past year at Temple College and sharing The No-Dig Gardening method on October 21st for the monthly general membership meeting.

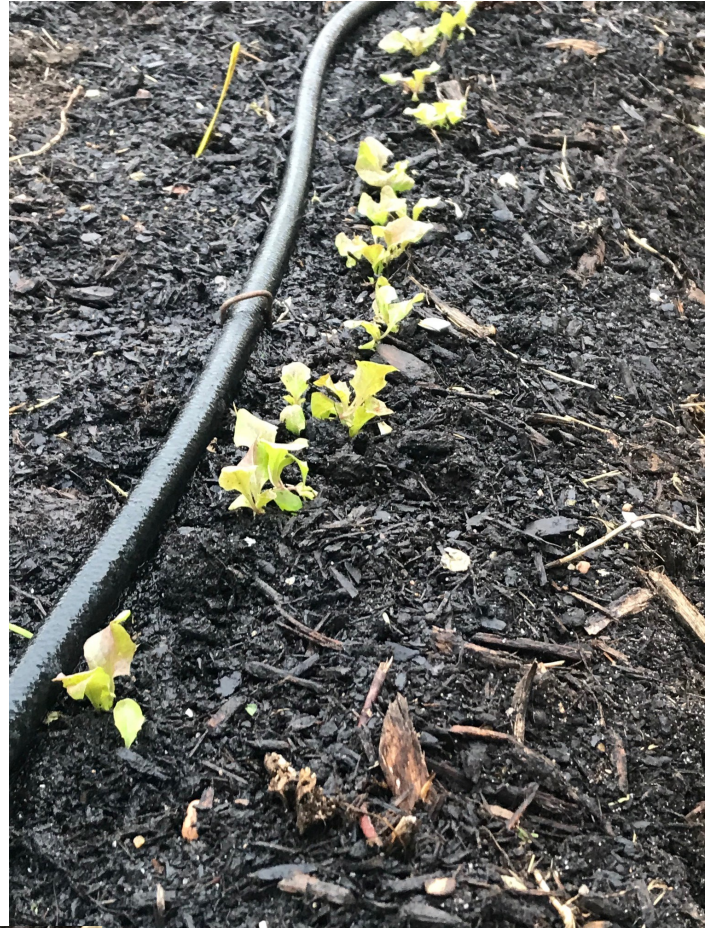


1 of 2

# What's Happening...

Temple College Phi Theta Kappa Garden 9/18/2020

By Marjorie Gillmeister



2 of 2

# What's Happening...



## What's Blooming at Temple College PTK Garden

By Marjorie Gillmeister



Lavender



Our friend living in the carrot row



Banana Pepper



Chinese garlic chives  
and winter savory



Alyssum started from seed last year in December  
by students



Dragon flies surround us everywhere

# What's Happening...



## What's Blooming at Temple College PTK Garden

By Marjorie Gillmeister



Snap dragons started from seed last December by students



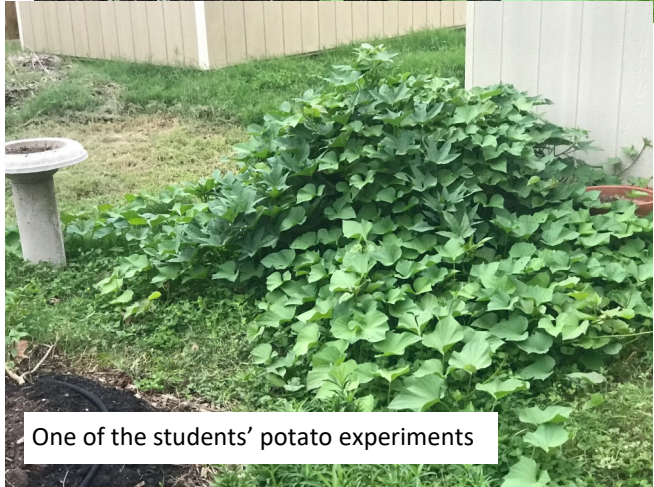
Hollyhock



Herb bed



Calendula



One of the students' potato experiments



Cinnamon basil plants many frog eggs were present after the rainfall

# What's Happening...



## Montessori Temple Garden

By Marjorie Gillmeister



Native milkweed seeds planted by students last year



No dig garden bed with mushroom compost and native wood mulch. Spring plants still growing into the fall season: tomatoes, okra, oregano, mint, basil and peppers

Orange Mint



Basil



Chocolate Cherry Tomatoes



Transplanted Spring tomatoes started in eggshell pods are blooming to produce more fruit for fall tomatoes



# What's Happening...



## Montessori Temple Garden

By Marjorie Gillmeister



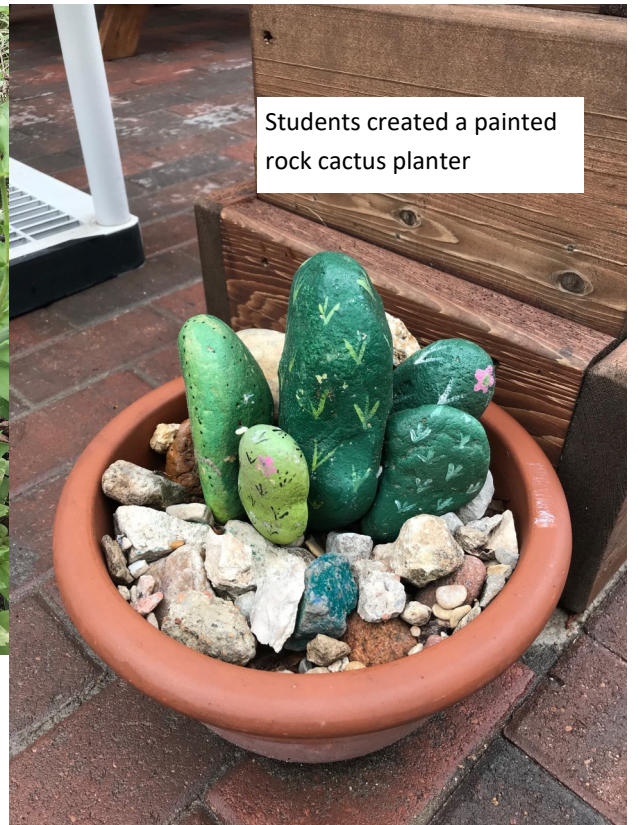
Lemon balm



Butterfly garden: Future lesson is planned for students to plant wildflower seeds



Self seeding zinnias in butterfly garden



Students created a painted rock cactus planter



Potato Bed

# What's Happening...



## Meridith-Dunbar Early Childhood Academy

By Marjorie Gillmeister

Please note that Montessori, Temple College, and Meridith-Dunbar Early Childhood Academy are all BCMG approved projects. During these times we are limited as to how many volunteers are able to be present for these projects.



Raised beds outside of Sylvia's classroom



Future pumpkin and watermelon patch



Sylvia Guajardo, dedicated Nature Explore teacher, shared her new garden with me. We have wonderful projects planned for the expansion of this garden that provides an outdoor Nature learning space for 400 four year old students of low income families.

Marjorie Gillmeister and Janice Smith have a garden day scheduled on Monday, September 28th. Due to our current situation, only two MGS are able to work with students until further notice.



## General Membership Meeting Highlights September 7, 2020

### September General Membership Meeting

Bell County Master Gardener Association



### *Financial Report*

- » August income of \$404 included a new class registration and sale of miscellaneous merchandise
- » August expenses of \$1,534 included purchase of new soil order, new badges for recent graduates, electricity and water for facilities
- » Next month's expenses will include refunds to new class members in acknowledgement of shift from in-person to remote learning. This expenditure was approved by the New Class committee and Lyle Zoeller

	1/1	8/30
Bank Balance	\$40,479	\$34,374
Income (to date)		\$15,143
Expenses (to date)		\$21,146

# What's Happening...



## General Membership Meeting Highlights

September 7, 2020



### Plant Sale March 20, 2021 At Yettie Polk Park Pavilion in Belton

- Propagate & Grow Our Own
- Supplement as Needed from Area Nurseries
- Use Holland ISD Greenhouse 2<sup>nd</sup> Grade Project & with Eldreds Nursery Foundation
- BCMGA Purchase and Provide Soil
- Members Asked to Use Their Own Recycled Pots or If Pots Needed, Let Us Know
- We Will Provide a List of Wanted Plants
- Members Can Suggest Other Plants
- If Growing from Seed, We Will Provide

### HELP DESK STATS

Physical Staffing Started June 2017

	June 2017=7	June 2018=9	June 2019=13	June 2020=131	
	July 2017=13	July 2018=3	July 2019=44	July 2020=96	
	August 2017=11	August 2018=6	August 2019=31	August 2020=81	

Additional images:   



## General Membership Meeting Highlights September 7, 2020

B  
O  
N  
U  
S



### MORE HELP DESK INFO

Physical Help Desk Hours Monday & Wednesday 9 a.m. – 4 p.m.  
Sign up in VMS—Limited to 2 MGs per shift

Telephone 254/933-5304

Email [bell.mg@agnet.tamu.edu](mailto:bell.mg@agnet.tamu.edu)

If you want to help from home, give us your area(s) of interest. And we will forward calls/emails to you for response. Also let us know if you are willing to do home/site visits in what area(s) of the county. Must respond timely to all contacts so please don't sign up if you don't regularly monitor your emails. Also you will need to advise us of the outcome of your contact for our log and record your contacts in VMS.

### *Communications*

#### Update:

- » Website has been updated, if you haven't been there lately, check it out...[txmg.org/bell](http://txmg.org/bell)
- » Blooming Bell for September is available in VMS – there is a lot of helpful information.
- » YouTube will be merged into one channel by mid-month.
- » Volunteer Opportunity: looking for someone to join the video filming team.

#### Facebook:

- Facebook has become another source of education through posts & answering questioning. We made 34 contacts in August.
- We have been busy filming Facebook Live videos highlighting our BCMGA projects focusing on the projects education & service to our community.
- Recently we highlighted KMCG... check out our video.
- We have been busy working with Community Outreach on future education projects.

26

# What's Happening...



## General Membership Meeting Highlights September 7, 2020

### *Community Outreach Educational Videos*

#### Video:

- » Preserving Your Harvest
- » Four Simple Ways to Grow and Propagate Plants
- » Build Your Own Grow Light System
- » Composting
- » Keyhole Gardening

#### Upcoming Filming:

- » Preparing Your Lawn for Fall
- » Bee Keeping

29

### *Garden Gadget: Pot Mover*



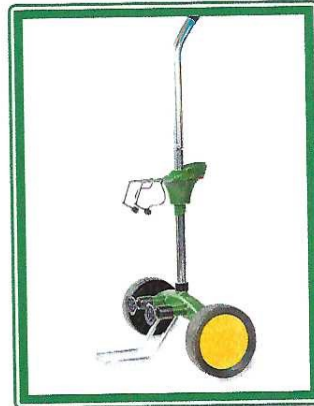
32

# What's Happening...



## General Membership Meeting Highlights

September 7, 2020



POT MOVER CADDY

33

### Monthly *Educational* Meeting

September 16 at 10:00am

One Hour Education Time

- » **Topic:** Research on *nutrient* use of eastern gamagrass and coastal bermudagrass.
- » In this talk I will discuss the importance of this grass, its diversity, how it uses nutrients (as compared to bermudagrass), and its future potential in U.S. agriculture. It is valuable for cattle forage (hay and grazing), but also for **wildlife habitat and food**, and can grow in wet soils where many other grasses cannot.
- »



Speaker: Jim Kiniry, PhD is a research agronomist with the USDA-Agricultural Research Service at the Grassland, Soil and Water Research Laboratory in Temple, TX.

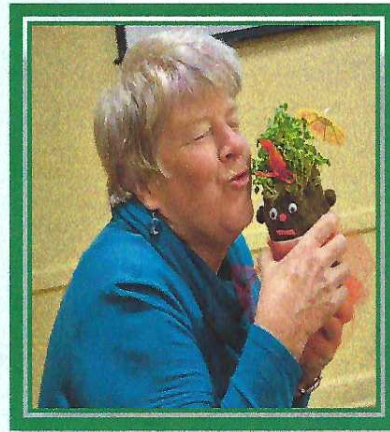
36



## General Membership Meeting Highlights September 7, 2020

### October General Membership Meeting

October 14, 2020  
10:00 am



### HELP DESK QUIZ ANSWERS



1 Nymph Stage Flatid  
Plant Hopper



5 Slime or  
Alcohol Flux



8 Homemade  
Insecticide  
Spray -  
Dawn



11 Eastern Cicada  
Killer (Female-  
Males Have No  
Stinger)



2 Mexican  
Buckeye  
Seed Pod



6 Twig Galls



9 Kissing  
Bug



Bark  
Stripping-  
Probably  
Squirrels



3 Spring Tree Fungus  
Probable  
Anthracnose



7 Kudzu-1<sup>st</sup>  
Identified Case  
in Bell Co.



10 Pecan Mite  
Damage at  
Bud Break



12 ID by  
Wizzic  
Brown-  
We had  
no clue!



4 Black Scale



# Firewise Landscaping

By Pat Johnson

During this time as we continue to take precautions from the pandemic of COVID-19, many of us are updating the landscape around our homes. After all of the rain we have had in the last few months, the memories of prior droughts are far from our minds. There are some things we might think about when selecting plants for our landscapes, particularly the area near our homes. Firewise landscaping could be considered when selecting plants to be placed near our homes.

You might think this does not apply to you, but if you live in an area close to a green space or area that is currently undeveloped or even any place that can catch fire (that just about covers all of us) this type of landscaping should be of interest to you. The landscape that surrounds our homes can become fuel for a wildfire.

Firewise landscaping is defined as a type of landscaping that reduces the vulnerability of a residence by selecting plants that lessen the chances of a wildfire reaching and damaging your home. The premise is to choose the right plant for the right place.

The area around our homes can be described as immediate-- zero to five feet, intermediate --fifty to thirty feet, and extended—thirty to one hundred feet. Firewise landscaping suggests that we plant no trees in the immediate area, trees with eighteen feet spacing in the intermediate area and trees with six to twelve feet spacing in the extended area. This is a consideration when clearing property where a house will be built or where a home currently exists.

Texas A&M Forest Service provides an extremely helpful brochure that describes what homeowners should consider in creating a firewise landscape. There is no plant that is fireproof, there are plants that are more fire resistant than others. A Texas plant flammability list is easily assessable on the internet by googling "Texas plant flammability list" or checking out <https://txmg-wpengine.netdna-ssl.com/ellis/files/2012/03/Texas-Plant-Flammability-List.pdf>.

Plants have characteristics that include fire resistance and growth characteristics. Fire resistance is how readily a plant will catch fire. Growth characteristics take into consideration the growth rate and the growth pattern of a plant. A plant that grows quickly will produce more foliage or fuel to burn in case of a wildfire. Plants that grow quickly may create more work for the owner such as trimming and maintenance. Whereas, slower growing plants will lessen the maintenance work for the owner in addition to being more firewise.

According to <https://www.fema.gov/media-library-data/1519061366471-725c32a4ffea6d6a9c03ebf33735a5d3/Firewise-landscaping.pdf>, "low--growing plants that are less dense are good in Firewise landscapes because they help maintain the vertical separation of fuels and produce less material to burn. A dense (compacted) plant contains more fuel than light-structured and open-branched species." A couple of example plants that would be acceptable planted within the first ten feet of a residence are columbine and primrose—these are low growing and moist. A couple of plants that would be acceptable within the intermediate area are asters and bluebonnets—these are taller plants. An example of plants for the extended area are butterfly bush and Turks cap—these are shrubs.

Here is a checklist that every homeowner should take into consideration when maintaining or creating a landscape. (Source <https://www.fema.gov/media-library-data/1519061366471-725c32a4ffea6d6a9c03ebf33735a5d3/Firewise-landscaping.pdf>)

1 of 3

# Firewise Landscaping

By Pat Johnson

## **Overgrown vegetation that is continuous and close to the house**

Move vegetation at least 3 feet from the foundation of the house.

Reduce, trim or replace larger plants.

Break up plant continuity with non-combustible materials, such as rock or lawn.

## **Plants are adjacent to deck, porch or siding**

Move plants at least 3 feet from deck, porch or siding.

Use low-growing and/or moist plants.

## **Ladder fuels are present where fire can climb from lower to higher vegetation**

Remove ladder fuels in the 30-foot defensible space that allow the fire to climb to larger fuel, including your home.

Laddering is acceptable in isolated islands or pockets away from structures or taller fuels.

## **Dead vegetation present, such as leaves and pine needles**

Prune and remove dead branches.

Rake and remove leaves and pine needles from under vegetation.

## **Large trees and plants**

If present, maintain crown spacing between larger trees.

Prune dead and overhanging branches over the roof.

Locate larger trees away from the home.

Trim lower branches of trees to at least 6 to 10 feet above the ground.

## **Dry /tall grass or dry plants are present**

Remove dry and tall grass near your home.

Keep the defensible space green and healthy.

Learn more about protecting your home and property at [www.firewise.org](http://www.firewise.org). There is an interesting segment of Central Texas Gardening at <https://www.centraltexasgardener.org/episode/firewise-landscaping/>.

Planting the right plant in the right place will make a big difference!

Happy gardening.

Pat Johnson

Bell County Master Gardener

# Firewise Landscaping

By Pat Johnson



The graphic above shows the zones in defensible space described in this article. Taken from "Firewise Landscaping in Texas," a publication by Texas A&M Forest Service.



# Fall Webworms

By Sylvia Maedgen

Scientific name: *Hyphantria cunea*

Family: Erebidae

Order: Lepidoptera

The fall webworm is a widely distributed North America native pest that appears from late summer through early fall. It feeds on many species of ornamental deciduous trees and shrubs as well as fruit and nut trees. However, it does not attack pines and other needle-bearing trees (conifers). This species acts similarly to the eastern tent caterpillar, but the fall webworm constructs its nest over the end of the branch rather than at tree crotches. The large conspicuous webs contain caterpillars, dead partially eaten leaves, and fecal droppings. Although fall webworms do not kill trees, if the caterpillars attack the same tree repeatedly over several years, they can stress the plant and make it more susceptible to drought, disease or other insect pests. Fall webworms often cover entire branches with their webs and in extreme infestations may cover the whole tree. The plant preference varies according to region. In West Texas, they prefer mulberry, poplar and willow – in East Texas, they most often attack sweetgum, oak, hickory and pecan. High numbers of webs can occur during any of the generations that occur through the summer. However, the last generation is generally the most damaging.



Tree branch encased with webworms

## **Description**

The fall webworm is a caterpillar; the larval stage of a small white moth. Full-grown caterpillars are approximately 1-inch long, pale green or yellow, and covered with tufts of long, white and black hairs.

When cooler temperatures herald the coming of fall, the larvae begin to enclose themselves in cocoons. They spend the winter as pupae in these silken cocoons on the ground or on tree bark. In the spring, the moths emerge from their cocoons, disperse and mate.

The fall webworm's name is somewhat misleading because the caterpillars and adult moths can be found in the spring as well. Fall webworms have four generations per year in South Texas, and two to three generations in northern parts of the state. The first generation occurs as early as April in South Texas and as late as June in the Panhandle.

# Fall Webworms

By Sylvia Maedgen

## *Life cycle of fall webworm*

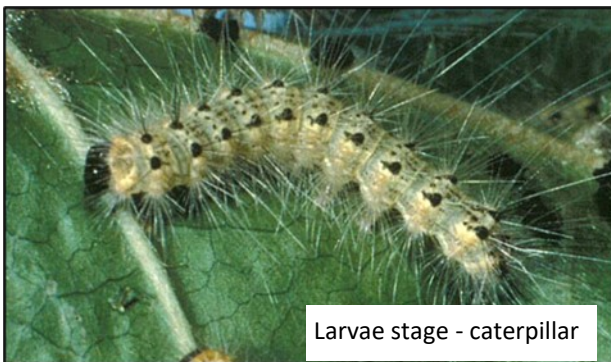
Under ideal conditions, the life cycle from egg to adult is approximately 50 days. Female moths deposit their hair-covered egg masses on the undersides of the leaves of plants they like to eat. Each female moth deposits only one egg mass in her life. These light yellow egg masses can contain up to 600 eggs. Larvae hatch in approximately 7 days.



Egg stage

Soon after webworm eggs hatch the larvae begin to build a web. Young larvae are pale yellow with 2 rows of black marks (tubercles) along their bodies (one pair on each body segment). When fully grown, they are covered with whitish hairs that originate from black and orange warts. Hairs on larvae may cause skin irritation. Larvae vary as to their coloring and markings, but are usually greenish with a broad, dusky stripe along the back with a yellow stripe along the side. As larvae consume leaves within the web, they expand the web to take in more and more foliage. The nest grows as they acquire more leaves. Larvae feed within the web—they eat the tender parts of leaves but avoid the

larger veins and midrib. Larvae are gregarious and feed together until the last molt, after which they may feed independently. Larvae mature in about 6 weeks.



Larvae stage - caterpillar



Pupal stage - encased in chrysalis/cocoon

All the larvae within a web are the offspring of a single egg mass and will molt six or seven times and sometimes up to 11 times between growth stages (instars) before leaving the web at maturity to pupate on or in the soil. The pupal stage is brown.

The adult fall webworm moth is about  $\frac{3}{4}$  inches long and has a 1 to 1½-inch wingspan. Its wings are white but sometimes may have small, dark spots on the forewings. These small white moths are commonly seen in summer months.



Adult Moth

# Fall Webworms

By Sylvia Maedgen

## **Damage**

Damage caused by the fall webworm is not significant to well-established, otherwise healthy trees. Damage is more unsightly than serious because of the limited amount of foliage consumed and the time of the year. The remains of these nests may persist through winter. These webs may sometimes surround 2-3 feet of an infested branch.

## **Control**

Scouting for fall webworms on trees that have experienced previous infestations is recommended. Remove any old nests and leaves from under the tree to reduce the amount of pupae that will emerge in the spring. Removing the webworm nests prematurely will quickly restore beauty to the landscape and reduce future outbreaks. Locate, remove and destroy any and all leaves that contain egg masses. The caterpillars can be controlled without insecticides. Larvae may be knocked out of lower branches with a stick or broom. Many birds and beneficial insects attack the egg and larval stages of fall webworm and keep populations under control in many years. You can help these predators and parasites get to their fall webworm prey by tearing open the webs. Webs can also be pruned from smaller branches; and dispose of nests in the trash. The webs are not predator-proof, and planting predator-attracting plants and flowers around susceptible trees may be enough to encourage webworm-eaters to take care of the problem without getting your hands dirty.

## **Treatment**

Remember that insecticides usually kill all insects and pesticides are poisonous. So give the beneficial insects and birds a chance to do their job and avoid applying chemicals. Birds and many insect predators and parasitoids attack the larval and egg stages. Insecticides are usually not necessary for control of webworms, but in extreme cases, a light coating of appropriate insecticidal spray may be applied to the nest, but the insecticide spray must penetrate the web to be most effective. As the caterpillars move within the nest, they will come into contact with the insecticide without the need to overspray the site. For best control, apply insecticides when webs and caterpillars are small. Insecticides containing *Bacillus thuringiensis* (Bt) or spinosad are effective and will not harm beneficial insects. Other insecticides may be used but may also be toxic to beneficial insects, so only use for severe infestations and always read and follow instructions on the pesticide label carefully. If you use sprays on pecan trees, read the label to be sure the product is safe to use on pecans because they are a food crop. Homeowners should also be aware that because treatments are applied in sprays, the products could drift onto other plants on your property or a neighbor's property and cause damage. Also, homeowners should consider hiring a licensed commercial applicator for larger trees.

Read and follow directions and safety precautions on labels. Handle carefully and store in original labeled containers out of the reach of children, pets, and livestock. Dispose of empty containers right away, in a safe manner and place. Do not contaminate forage, streams, or ponds.

## **Resources:**

Texas A&M Extension Service, Bill Ree and Marty Jungman

Iowa State Extension

Maryland Extension Mississippi State Extension, Susan M. Collins-Smith

North Carolina Extension, Steve Pettis

Pennsylvania State Extension, Gregory A. Hoover, Sr.

A Field Guide to Common Texas Insects, Bastiaan M. Drees, Ph.D. and John A. Jackman, Ph.D.

# **Sharing is Caring...** 😊 😊

Photos and text by Gary Slanga



"The Yellow are *Zephyranthes citrina*, one of the many colored Rain Lilies. Obviously, they popped up after our latest rains. And the red are *Rhodophiala bifida* or Oxblood Lilies, sometimes called school house lilies because they always bloom in the fall. Usually about September."



# Sharing is Caring... 😊 😊

## Swallowtail Caterpillars

Photos and text by Crystal Fisher

"I was replacing two Rue plants that had died earlier in the year of the six that I had originally planted. While working around them, I took a closer look at how well the initial plants were doing. Was I ever surprised to see as many caterpillars as I did.

This makes me very glad that I didn't plant less... and maybe want to plant even more next year 'cause every maturing plant had several Black Swallowtail cats on them. It was worth stopping just to get these photos for you."





# **Sharing is Caring...** 😊 😊

## **Giant Swallowtail Caterpillar**

Photos and text by Crystal Fisher

“Since I saw so many Black Swallowtails on the Rue, I couldn’t wait to go check the Wafer Ash. Lo and behold, there was ONE Giant Swallowtail cat. Even if only one Giant Swallowtail grows to become a butterfly, it was worth planting the Wafer Ash.”



# Sharing is Caring... 😊😊

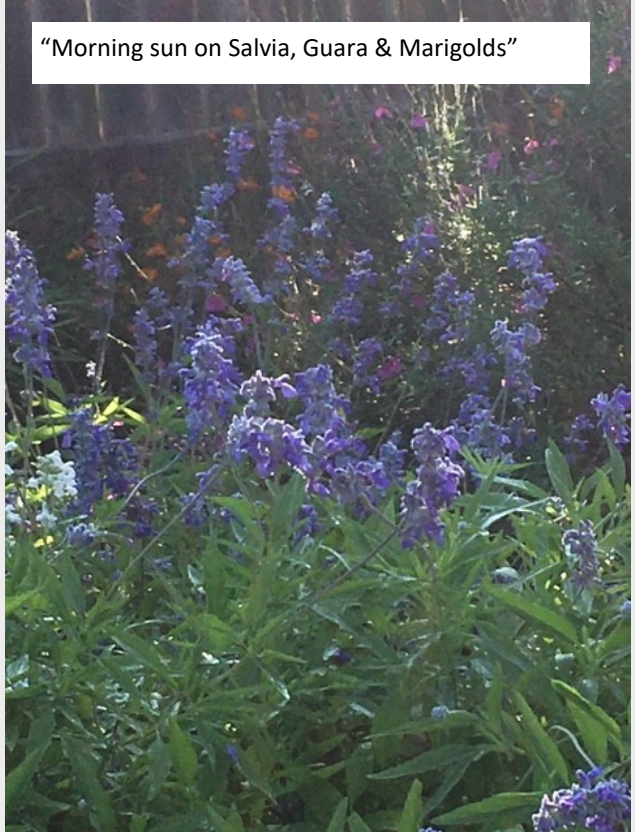
## Happening in Gail's Garden

Photos and text by Gail Pierce

"Morning dew seen on my Belinda's Dream rose."



"Morning sun on Salvia, Guara & Marigolds"



"Okra enjoying the sun."



Volunteer Spider Lillies



# Sharing is Caring... 😊😊

## McCLANE CHILDREN'S HOSPITAL HEALING GARDEN 9/30/2020

Photos and text by Victoria Ezagui

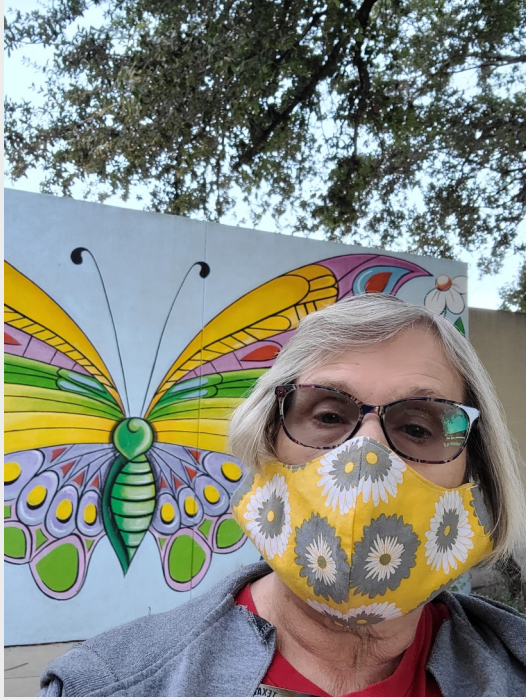
We had a work day planting fall flowers. Those who were there were Nestor Centeno, Linda Farmer, Claudett Hawkins, and Gail Mears.



# Sharing is Caring... 😊😊

## McCLANE CHILDREN'S HOSPITAL HEALING GARDEN 9/30/2020

Photos by Victoria Ezagui



# **Sharing is Caring... 😊😊**

## **Mary Lou Edmondson's "Autumn Clematis" ... newsletter worthy**

Photo and text submitted by Crystal Fisher



"When given support, the Turks cap will grow above it reaching for the sun. In this case it

# **Sharing is Caring...** 😊 😊

Submitted by Crystal Fisher

**WHO ARE WE?**



**GARDENERS!**



**WHAT DO WE WANT?**



**ALL THE PLANTS!**



**WHERE WILL WE PUT THEM?**



**WE DON'T KNOW!**



imgflip.com

© beverly malcom

# ***What's Coming Up!***

## **Educational Videos**

[New YouTube shorts](#) is the link to the Master Gardener YouTube channel.

This channel is connected to the BCMGA gmail account and will include short videos as well as some longer educational videos which are being worked on.

These are considered educational videos and can be used towards your education hours. If you have any questions about how to log these hours to VMS, please contact Teri Marceau at [terimmarceau@gmail.com](mailto:terimmarceau@gmail.com).

## **Volunteers Needed**

2 to 3 volunteers are needed on Friday, October 16th from 10:15 to 11:45 to help youth at the Juvenile Justice Center in Killeen to build 2 raised garden beds. This project is part of the Learn, Grow, Eat, Go Junior Master Gardener curriculum being implemented for resident youth at the Justice Center.

This is a one time project. All materials will be supplied, but you will need to bring a hammer and portable drill. Please sign up on the Youth Calendar in the VMS system, or email Janice Smith directly if you have any questions. [jmksmith5@gmail.com](mailto:jmksmith5@gmail.com)

## **Soil Notification**

You may pick up soils, compost, and chicken manure on Wednesday mornings during grounds maintenance or use the honor system and pick up at your convenience.

If you pick up in person, you may use cash or check; if you pick up using the honor system, only checks are acceptable.

Effective 8/16/2020 there will be a lockbox installed in the shed so that you may leave payment without going into the building. Prices are as follows:

Garden Soil: \$19.00

Vermiculite: \$25.00

Mushroom Compost: \$5.00

Composed Chicken Manure: \$5.00

If you have any questions, please contact Paul Carter 254-247-4855 or Karen Colwick 254-913-4459

# ***What's Coming Up!***

## **ASK A MASTER GARDENER DAY (AAMGD) - Saturday, October 24th**

AAMGD is a two fold event in which teams of 2-4 Master Gardeners will work a single table placed in front of local feed stores, (i.e. Steglich Feed & Farm Store and Belton Feed Supply), nurseries (for example Grizzly's Hidden Falls Nursery and Eldred's), and other local stores like Lowes, HEB, and Natural Grocers, but not limited to these locations.

The idea is two fold. The first is to carry out our mission statement in providing our neighbors with quality, relevant, research-based horticulture education by answering questions and passing out our educational materials before or after folks shop. The second is to seek those who will consider supporting us financially through small monetary donations.

The number of businesses that will partner with us depends on our Membership. Please consider working a table at a location near your home on Saturday, October 24th, from 9 am to noon.

Please contact Teri Marceau at [terimmarceau@gmail.com](mailto:terimmarceau@gmail.com) or by call/text at **(949) 212-7668**.

## **Garden Garage Sale**

**October 10, 2020**

**Time:** 8:00 AM—Noon

**Place:** The Learning Center Grounds (no indoor activities)

**Coordinators:** Carol Morisset and Christi Reese

We will sell old garden gadgets, tools, pots, etc. You may have some lawn art you are looking to discard or home decor which will be accepted. Note we will not sell any large furniture items or items that are made of fabric.

All items should be dropped off at the learning center on Wednesday October 7th and/or Friday October 9th from 9 am - noon. Stacye Parry will check your donations and price them accordingly. All proceeds will go to BCMGA.

We will only utilize the outside grounds within the fenced area surrounding the learning center. We will not have access to the inside of the building. **Kathy Patterson is in charge of working the gate to make sure we are not over capacity inside the yard. Another volunteer or 2 is welcome.**

Please note we will provide hand sanitizer at the door and at each table. We will also offer disposable gloves to those who desire to wear them. All MGs working the day of the sale will be required to wear a face covering/mask per the County guidelines.

**Other team leaders needing assistance are Sylvia Maedgen-cashier, Becky Lackey-signs, Terri Marceau-advertising, and Margorie Gillmeister-plants.**

**Please contact Carol Morisset directly either by email or phone, [carol.j.morisset@gmail.com](mailto:carol.j.morisset@gmail.com) / (254) 931-1280 if you have questions**



# What's Coming Up!

## March 20, 2021 Plant Sale Grow "Wish" List

Yettie Polk Pavilion in Belton

*Please review email sent by Kathy Love on 9/14/2020 for information regarding the plant sale and soil.*

PLANT	EK SCORE	TYPE	SIZE
ASPARAGUS FERN		FERN	1 GAL
BASIL: AFRICAN		HERB	4"
BASIL: BLUE SPICE		HERB	4"
BASKET OF FIRE PEPPER		VEGETABLE	
BAY LAUREL		HERB	4"
BEEBALM: PETER'S PURPLE		HERB	4"
BEEBALM RED MONARDA			
BLACKFOOT DAISY	TX NAT	PERENNIAL	4"
BLUE CURLS	TX NAT	ANNUAL	4"
BLUE DAZE	7	ANNUAL	4"
BLUE PLUMBAGO	7-TSS	WARM SEASON ANNUAL/ PERENNIAL	4"
BLUE SHRUB SAGE		SHRUB	1 GAL
BUTTERFLY BUSH BLACK KNIGHT		PERENNIAL SHRUB	1 GAL
BUTTERFLY BUSH HONEYCOMB		PERENNIAL SHRUB	1 GAL
BUTTERFLY BUSH NANHO BLUE		PERENNIAL SHRUB	1 GAL
BUTTERFLY BUSH PINK DELIGHT		PERENNIAL SHRUB	1 GAL
CALIBRACHOA MIX		ANNUAL	
CALYLOPHUS	TX NAT	PERENNIAL	1 GAL
CARDOON		VEGETABLE	4"
CATMINT WALKER'S LOW		PERENNIAL	4"
CEDAR SAGE	TX NAT	PERENNIAL	4"
CELOSIA MIX		ANNUAL	
CESTRUM, ORANGE PEEL		SHRUB	1 GAL
CHILI PEQUIN	TX NAT	HERB	4"
CHINESE SILVER GRASS	7	PERENNIAL/GRASS	4"
CHIVES GARLIC		HERB	4"
CHIVES, ONION		HERB	4"
CHOCOLATE DAISY		PERENNIAL	4"
COLUMBINE TEXAS GOLD	TSS/ TXNAT	PERENNIAL	4"
COMMON MORNING GLORY	9	PERENNIAL FLOWERING VINE	4"
CONEFLOWER, PALE		PERENNIAL	4"
CONEFLOWER, POW WOW BERRY		PERENNIAL	4"

# What's Coming Up!

## March 20, 2021 Plant Sale Grow "Wish" List

Yettie Polk Pavilion in Belton

PLANT	EK SCORE	TYPE	SIZE
CONEFLOWER, PURPLE		PERENNIAL	4"
CORALBERRY		PERENNIAL	4"
COREOPSIS LANCELEAF	8	PERENNIAL	4"
COREOPSIS, NANA		PERENNIAL	1 GAL
CROSS VINE	9	VINE	1 GAL
CUCUMBER: HOMEMADE PICKLES		VEGETABLE	4"
CUCUMBER: MARKETMORE		VEGETABLE	4"
CYPRESS-STANDING		PERENNIAL	4"
DAISY, ENGLEMAN'S		PERENNIAL	4"
DAISY, FOUR NERVE	TX NAT	PERENNIAL	4"
DAISY, MAXIMILIAN	TX NAT	PERENNIAL	4"
DAMIANITA	TX NAT	PERENNIAL	4"
DIANTHUS, BLACK & WHITE		PERENNIAL	
DIANTHUS, FIRST LOVE		PERENNIAL	4"
DIANTHUS MIX		PERENNIAL	
DILL: BOUQUET		HERB	4"
DILL: FERNLEAF		HERB	4"
DUSTY MILLER	7.21	ANNUAL	4"
EGG PLANT: BLACK BEAUTY		VEGETABLE	4"
EGG PLANT: ICHIBAN		VEGETABLE	4"
ESPERANZA, GOLD STAR		PERENNIAL	1 GAL
ESPERANZA, YELLOW BELLS	8	LG.SHRUB/SMALL TREE	1 GAL
EVE'S NECKLACE	8	SM. TREE	3-5 GAL
FALL ASTER		PERENNIAL	4"
FENNEL: FLORENCE		HERB	4"
FIREBUSH	0-TSS	ANNUAL/PERENNIAL/SHRUB	4"
FIRECRACKER FERN		PERENNIAL	1 GAL
FLAME ACANTHUS	10	PERENNIAL	4"
FOXTAIL FERN		FERN	1 GAL
GAY FEATHER		PERENNIAL	4"
GAZANIA MIX	8	PERENNIAL GROUNDCOVER	4"
GLOBE AMARANTH	7-TSS	WARM SEASON ANNUAL	4"
GOMPHRENA		WARM SEASON ANNUAL	
HEN CHICKS	9	SUCCULENT	4"

# What's Coming Up!

## March 20, 2021 Plant Sale Grow "Wish" List

Yettie Polk Pavilion in Belton

PLANT	EK SCORE	TYPE	SIZE
HENRY DUELBERG SALVIA	TSS	PERENNIAL	4"
HOLLY FERN	5.2	FERN	4"
HORSETAIL	7.2	PERENNIAL/GROUNDCOVER	4"
ICE PLANT, Purple	8	GROUNDCOVER	4"
ICE PLANT, Yellow	8	GROUNDCOVER	4"
JERUSALEM SAGE		PERENNIAL	4"
JOHN FANICK PHLOX	TSS	PERENNIAL	4"
LAMBS EAR, HELEN VON STEIN		PERENNIAL	4"
LANTANA	6-TSS	PERENNIAL	4"
LAVENDER: PROVENCE		HERB	4"
LEMON BALM		HERB	4"
LEMON GRASS		HERB	4"
LIRIOPE	7	PERENNIAL/GROUNDCOVER	4"
MARJORAM, SWEET		HERB	4"
MARIGOLD MIX		ANNUAL	
MEALY BLUE SAGE, AUGUSTA DUELBERG	TX NAT	PERENNIAL	4"
MEALY CUP SAGE, EVOLUTION	TX NAT	PERENNIAL	4"
MEXICAN BIRD OF PARADISE	TX NAT	PERENNIAL	1 GAL
MEXICAN BUSH SAGE	TSS	PERENNIAL	1 GAL
MEXICAN HONEYSUCKEL		PERENNIAL	4"
MEXICAN MINT MARIGOLD	6	PERENNIAL	4"
MEXICAN ZINNIA	8	WARM SEASON ANNUAL	4"
MILKWEED ANTELOPE HORN			
MINT: MIX		HERB	4"
MISSOURI PRIMROSE		PERENNIAL	4"
MISTFLOWER, GREGG'S BLUE	TX NAT	PERENNIAL	4"
MISTFLOWER-FRAGRANT		PERENNIAL	4"
MOSS ROSE	10	ANNUAL	4"
MOUNTAIN PEA		PERENNIAL	4"
MYSTIC SPIRES BLUE SALVIA	TSS	PERENNIAL	4"
NATIVE MILKWEED		PERENNIAL	4"
NEW GOLD LANTANA	TSS	PERENNIAL	4"
OREGANO: MIX		HERB	4"
PASSION FLOWER	5.2	VINE	4"

# What's Coming Up!

## March 20, 2021 Plant Sale Grow "Wish" List

Yettie Polk Pavilion in Belton

PLANT	EK SCORE	TYPE	SIZE
PENSTAMON, HILL COUNTRY	TX NAT	PERENNIAL	4"
PEPPER, BELL MIX		VEGETABLE	4"
PEPPER, JALAPENO		VEGETABLE	4"
PEPPER, POBLANO		VEGETABLE	4"
PERENNIAL FOUNTAIN GRASS	7	PERENNIAL GRASS	1 GAL
PETUNIA MIX		ANNUAL	
PINCUSHION FLOWER, BUTTERFLY BLUE		PERENNIAL	4"
PLAINS COREOPSIS OR TICK-SEED	10	ANNUAL	4"
POWIS CASTLE ARTEMISIA	7.2	PERENNIAL/SM. SHRUB	4"
PRIMROSE JASMINE	10	VINING SHRUB	1 GAL
PURSLANE	10	ANNUAL	4"
RED YUCCA	10	SMALL SHRUB	1 GAL
RIVERFERN		PERENNIAL	4"
ROCKROSE	8	PERENNIAL/SM.MED.SHRUB	4"
ROOT BEER PLANT		PERENNIAL	1 GAL
ROSEMARY, UPRIGHT 'HARDY HILL'		HERB	4"
RUDBEKIA ANY VARIETY		PERENNIAL	
RUDBECKIA BECKY MIX		PERENNIAL	4"
RUDBECKIA CHERRY BRANDY		PERENNIAL	4"
RUDBECKIA GOLDSTRUM		PERENNIAL	4"
<b>RUELLIA KATIE DWARF WHITE</b>	<b>TSS</b>	<b>PERENNIAL</b>	<b>4"</b>
RUELLIA, 'Ragin' Cajun'		PERENNIAL	4"
SAGE, RUSSIAN		PERENNIAL	4"
SAGE: MIX		HERB	4"
SALVIA GREGGII CORAL		PERENNIAL	4"
SALVIA GREGGII FURMAN'S RED	TX NAT	PERENNIAL	4"
SALVIA GREGGII PINK		PERENNIAL	4"
SALVIA, FOREST FIRE		PERENNIAL	4"
SALVIA, LIPSTICK		PERENNIAL	4"
SALVIA, RASPBERRY		PERENNIAL	4"
SANTOLINA, LAVENDER COTTON		PERENNIAL	4"
SCENTED GERANIUM: ASSORTED		HERB	4"
SHRIMP PLANT	9	PERENNIAL	1 GAL
SILVER PONY FOOT	TX NAT	GROUND COVER	4"
SKULLCAP, TX PINK		PERENNIAL	4"

# What's Coming Up!

## March 20, 2021 Plant Sale Grow "Wish" List

Yettie Polk Pavilion in Belton

PLANT	EK SCORE	TYPE	SIZE
SOCIETY GARLIC		PERENNIAL	4"
SQUASH, ACORN		VEGETABLE	4"
SQUASH, BUTTERNUT		VEGETABLE	4"
SQUASH, WHITE SCALLOP		VEGETABLE	4"
SQUASH, YELLOW STRAIGHTNECK		VEGETABLE	4"
SQUASH, ZUCCHINI		VEGETABLE	4"
SWISS CHARD, BRIGHT LIGHTS		VEGETABLE	4"
TEXAS BETONY	TX NAT	PERENNIAL	4"
TEXAS SAGE, CENIZO	9	MED./LG. SHRUB	1 GAL
THYME: MIX		HERB	4"
THYRALLIS	7-TSS	SM./MED.SHRUB	3 GAL
TOMATO, BETTER BOY		VEGETABLE	4"
TOMATO, BLACK CHERRY		VEGETABLE	
TOMATO, BLACK KRIM		VEGETABLE	4"
TOMATO, CELEBRITY		VEGETABLE	4"
TOMATO, CHEROKEE PURPLE		VEGETABLE	4"
TOMATO, EARLY GIRL		VEGETABLE	4"
TOMATO, HOMESTEAD		VEGETABLE	4"
TOMATO, JULIET		VEGETABLE	4"
TOMATO, LEMON BOY		VEGETABLE	4"
TOMATO, PATIO		VEGETABLE	4"
TOMATO, PORTER		VEGETABLE	4"
TOMATO, RED CHERRY		VEGETABLE	4"
TOMATO, ROMA		VEGETABLE	4"
TOMATO, SUN GOLD		VEGETABLE	4"
TOMATO, SWEET 100		VEGETABLE	4"
TOMATO, YELLOW PEAR		VEGETABLE	4"
TOMATO: DWARF CHERRY SURPRISE BHN 968	TSS	VEGETABLE	4"
TURKS CAP (MIX)	7-TSS	PERENNIAL	4"
VERBENA	TSS	PERENNIAL	4"
VERBENA, HOMESTEAD	5	PERENNIAL	4"
VINCA MIX		ANNUAL	
WHITE MISTFLOWER	TX NAT	PERENNIAL	4"
WHITE PLUMBAGO		PERENNIAL	4"
WHITE RAIN LILLY		PERENNIAL	4"
WHITE SAGE	10	PERENNIAL	4"
WINECUP	TX NAT	PERENNIAL	4"
YARROW MIX		HERB	4"
YARROW, FERNLEAF CLOTH OF GOLD		HERB	1 GAL
ZEXMENIA, ORANGE	TX NAT	SM.SHRUB	4"

# Announcement...



After a lot of discussion and consideration, due to the uncertain times surrounding the COVID-19 virus, and State and County guidelines, it is with heavy hearts the BELL COUNTY MASTER GARDENERS ASSOCIATION has decided to cancel our fall plant sale.

We have put together a list of local nurseries and feed stores for all your fall gardening needs. Should you have any questions or concerns about what and when to plant please do not hesitate to contact us via phone: 254-933-5304; email: [bell.mg@agnet.tamu.edu](mailto:bell.mg@agnet.tamu.edu); website: [txmg.org/bell](http://txmg.org/bell) or send a message on Facebook. Finally, for specific plant selection and protocols please give the nursery or feed store a call directly.

## NURSERIES IN BELL COUNTY

Eldreds, 254-913-4474, 1220 N. Main, Belton

Grizzly's Hidden Falls, **254-698-6008**, 1101 U.S. Hwy 190, Nolanville

Earthscapes Garden and Home, 254-773-4668, 5317 Loop 205, 2 acres, Temple

Temple Feed, 254-778-7975, 305 S. 2nd St., Temple

Belton Feed, 254-939-3636, 410 E. 2nd Ave., Belton

Lonesome Pine Nursery, 254-791-0884, 3120 E. Adams Ave., Temple

Steglich Feed & Farm Supply, 254-527-4433, 142 S. Dalton, Bartlett

Garden City Nursery, 254-831-5100, 1315 W. Avenue O, Belton

## A LITTLE FURTHER AFIELD

Wrights Nursery, 512-489-2239, 6040 FM 2657, Briggs. By appt. only. (Burnet County)

Coryell Feed & Supply, 254-865-6315, 213 E. Main St., Gatesville (Coryell County)

Bonnie's Greenhouse, 254-799-7909, 5198 Orchard Ln, Waco (McLennan County)

Westview, 254-772-7890, 1136 N. Valley Mills dr., Waco (McLennan County)

Green Life Nursery, 254-776-2400, 1312 N. New Rd., Waco (McLennan County)

Robinson Greenhouse, 254-662-0311, 628 N. Robinson Dr., Robinson (McLennan County)

Wildseed Farms, 830-990-1393, 100 Legacy Dr., Fredericksburg

# Announcement...



**Cont'd...**

## **Nurseries in WILLIAMSON COUNTY**

McIntires, 512-863-8243, 303 Leander Rd., Georgetown  
Red Barn, 512-335-8093, 690A N. Bagdad Rd, Leander  
Farmers Nursery, 512-259-4111, 1305 Leander Dr, Leander  
Joss Growers, 512-863-4950, 900 CR 130, Georgetown

**THE FOLLOWING NURSERIES ARE LIMITING THEIR PARKING TO KEEP NUMBER OF SHOPPERS SMALLER. LESS PERSONEL. CREDIT/DEBIT ONLY. CURBSIDE AVAILABLE.**

Hill Country Water Gardens, 512-260-5050, 1407 N. Bell Blvd (hwy 183), Cedar Park  
Green `n Growing, 512-251-3262, 601 W. Pecan, Pflugerville  
Great Outdoors, 512-448-2992, 2730 S. Congress, Austin  
Barton Springs, 512-872-6390, 3601 Bee Caves, Westlake  
Natural Gardener, 512-288-6113, 8648 Old Bee Caves Rd., Austin

## **TIME FOR A ROADTRIP!**

Backbone Valley Nursery, 830-693-9348, 4201 FM 1980, Marble Falls  
Wildseed Farms, 830-990-1393, 100 Legacy Dr., Fredericksburg

# ***Announcement...***



## **Connecting Agriculture and Health From the Ground Up**

Tuesday, January 5, 2021 - 8:50 am - 4:00 pm  
Waco Convention Center - Waco, TX

**SAVE THE DATE**

TEXAS A&M  
**AGRILIFE**  
EXTENSION

*Learn more about the connection of agriculture and health and the  
vital role agriculture plays in our daily lives.*



# Announcements...

## October General Membership Business Meeting

**When:** October 14, 2020

**Where:** [Via Online Meeting](#)

**Time:** 10:00 AM

-----

## General Membership Educational Session

**When:** October 21, 2020

**Where:** [Via Online Meeting](#)

**Time:** 10:00 AM

**Topic:** **Will be announced when confirmed**

## Board of Directors Meeting

The Board of Directors Meeting will be held on **Wednesday, October 28 at 9 a.m. via teleconference.**

Members are welcome to join the call.

Please submit your agenda items to Sylvia Maedgen, Recording Secretary, by **Wednesday, October 21.**

## Grounds Work Days

**Karen Colwick and Paul Carter**

We are all advised to make any day a work day. Karen has posted a list of "to dos" on the Annex gate. Please check the list before "digging in".



In the event of rain, there will be no work day.

## Communications

While restrictions are in place, please send photos of your garden with a note about your photos to [TeriMMarceau@gmail.com](mailto:TeriMMarceau@gmail.com) or to [Bell.mg@agnet.tamu.edu](mailto:bell.mg@agnet.tamu.edu) and Teri will post them on Facebook.

\*\*\*\*\*

If you know of someone in our organization who is ill, scheduled to have surgery, or has lost a loved one (including fur babies) please email Teri Marceau at [bell.mg@agnet.tamu.edu](mailto:bell.mg@agnet.tamu.edu), or our correspondence secretary, Debbi Harris, at [dcharris99@yahoo.com](mailto:dcharris99@yahoo.com).

An appropriate card will be sent.

## ~~Refreshment Committee General Membership Meeting~~

~~A minimum of 7 volunteers are needed for each meeting. Future meetings are on hold until further notice.~~



# Upcoming Events

## Advanced Training

### Online Courses

Oct 16, 23, 30      Greenhouse Management      Fort Worth

Ongoing      Earth-Kind® On-Line Master Gardener Training modules      <https://aggie-horticulture.tamu.edu/earthkind/training/>

## Extension Events



There are no upcoming Bell County Extension events at this time. Stay tuned!



Photo submitted by Juan Anaya

### Directors

Communications	Teri Marceau	2020-2021
Facilities	Paul Carter & Karen Colwick	2019-2020
Membership	Sherry Oermann	2020-2021
KMCCG	Edie Campbell	2019-2020
Outreach	Christy Reese & Carol Morisset	2019-2020
New Class	Gary Slanga	2019-2020
Projects	Barbara Ishikawa & Stacye Parry	2019-2020
Youth	Janice Smith	2020-2021

### Executive Board

President	Glenn Melton	2019-2020
1 <sup>st</sup> Vice President	Jan Upchurch	2020-2021
2 <sup>nd</sup> Vice President	Bill Walker	2019-2020
Recording Secretary	Sylvia Maedgen	2020
Treasurer	Barbara Ishikawa	2020-2021

**AgriLife Agent Lyle Zoeller**

### Contributing Writers and Photographers

Glenn Melton	Janice Smith	Gary Slanga
Wizzie Brown	Teri Marceau	Pat Johnson
Wayne Schirner	Crystal Fisher	Victoria Ezagui
Randy Brown	Susan Terry	Marjorie Gillmeister
Juan Anaya	Jan Upchurch	Gail Koontz
Sylvia Maedgen	Kathy Love	
Gail Pierce	Crystal Mears	

### Editor: Virginia Bargas

Please submit articles of less than 500 words as Word documents. Photos should be sent separately in a folder through a link using OneDrive, Dropbox, Google Photos, or in a zipped file. **Photos must be in the JPEG format.** Do not text your photos. *(If texting is preferred, please let me know in advance.)* Email your documents and pictures to Virginia at [bargasv@hotmail.com](mailto:bargasv@hotmail.com).

***Please do not send PDF documents.  
I will send them back to you!***

**BCMGA Webmaster:** Rachel Glass - [glass.rachel@gmail.com](mailto:glass.rachel@gmail.com)

Please send your updates for the BCMG website to Rachel.

**CHECK OUT BCMGA FACEBOOK PAGE! GO TO**

<https://www.facebook.com/BCMGA>

### Texas Master Gardener website

<https://txmg.org>

### Bell County Master Gardener website

<https://txmg.org/bell/>

### Texas Master Gardener Volunteer Management System

<https://texas.volunteersystem.org/UniversalLogin.cfm?logout=1>



1605 N. Main St.  
Belton, Texas 76513  
(254) 933-5305

A publication of the Bell County Master Gardener Association sponsored by Texas AgriLife Extension of Texas A & M University