

The Blooming Bell



March 2019



INSIDE THIS EDITION:


Calendar	2
President's Corner	3
Wizzie's World of Insects	4
What's Been Happening	5
Member Spotlight	10
What's Happening in Your Yard?	12
Tidbits of Info	13
Announcements	14
Upcoming Events	17



(Above) Master Gardeners providing information to the public at the BCMG booth at the Bell County Home & Garden Show at the Expo in Belton on February 23-24. (Right) The MG's also had 2 booths at the show in the Kids Zone with the ladies assisting with fun activities for the kids in attendance. The kids did egg shell seed plantings and learned about the lifecycle of a butterfly and made a butterfly.

Photos by Sylvia Maedgen

March 2019

SUNDAY	MONDAY	TUESDAY	WEDNESDAY	THURSDAY	FRIDAY	SATURDAY
					1	2 Harker Heights Spring Fling Seed Swap-11 am
3	4	5	6 Work Day-8 am*- cancelled Herb Study-Salad Herbs-9:30 am, Social-9 am Burger Wed.-10:30 am-cancelled	7 Wright's Nursery- Plant Sale Prep Workday-9 am	8	9
10	11	12	13 Work Day-8 am* General Mtg-10 am, Social-9:30 am	14 Wright's Nursery- Plant Sale Prep Workday-9 am	15 Herbal Forum - Round Top	16 Herbal Forum - Round Top
17 	18	19	20 Work Day-8 am*	21 Gardening in Bell County-Spring Vegetable Planting -6:30 pm Wright's Nursery- Plant Sale Prep Workday-9 am	22 Cavazos Elemen- tary Career Day-8 am, Nolanville	23
24	25 Blooming Bell deadline	26	27 Work Day-8 am* BOD Mtg-9 am	28 Spring Plant Sale Workday	29 Spring Plant Sale Workday	30 Spring Plant Sale-7 am
31						

Upcoming events:

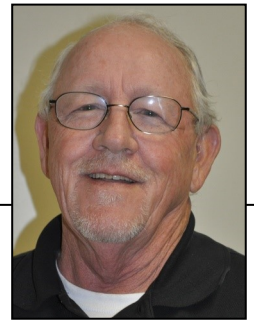
- ◆ Herb Study-Pretty edible flowers, Apr. 3, Belton, 9 am
- ◆ Leach Gardens/Bush Presidential Library Tours, College Station, 8 am
- ◆ Earth Day, Apr. 12, Fort Hood, 8 am
- ◆ Gardening Series-Spring Lawn/Turf Care, Apr. 18, Belton, 6:30 pm
- ◆ TMGA State Conference, Victoria, Apr. 24-27
- ◆ Career Day, Apr. 26, 8 am, Douse Elementary, Killeen
- ◆ Chisolm Trail Field Trip, Belton, Learning Bldg., Apr. 30, 8 am
- ◆ Clark Elementary Career Day, Fort Hood, May 17, 8 am

* In the event of rain, there will be No Workday.

Remember to record volunteer service hours and education hours separately each month. You may include your travel time to meetings and work projects as service hours. You can input your hours on the MG office computer on Wednesdays.

The President's Corner

Glenn Melton



Well, February is gone, and Spring is just around the corner. About time! The Mother Earth News Fair is over, and many members obtained several education hours at the various presentations given on the 16th and 17th of last month. Several of us attended the mushroom growing presentations and are anxious to start growing our own. I have to say that that Fair was a heck of a lot of fun!

The Home and Garden show was held on February 22, 23, and 24th this year. Attendance by the public was once again tremendous. We staffed a booth and gave out horticultural info and pamphlets and presented several classes covering everything from growing succulents on Saturday to Insects in Central Texas on Sunday. Saturday's classes were a huge success as we had an average of about 46 per session. A big Thank You to all our members who made this such a successful affair.

As you all know, the Spring Plant Sale, scheduled for March 30th, is a big undertaking for our group. Preparation and training meetings are scheduled for March 14th and 21st and there is still time to volunteer to help at these events. Please contact Christy Reece or sign up in VMS if you would like to help on either of these dates or assist at the Plant Sale the end of this month.

Last month I mentioned that as the weather improves, we will bring mulch or compost to spread around the facility. We will continue to do this as weather permits and the entire landscape is covered with new material. Please pass this information along to anyone who may need service hours. The area around the demonstration beds has been completed so now we will concentrate on the flower beds in the front.

Just a few reminders:

- The Communications, Projects, and Facilities Directors positions have been filled.
- Bill Walker will head up the General Membership Meeting on March 13th.
- Members are asked to keep in mind that the positions of 1st VP and Treasurer are up for election the end of this year. More details to follow.
- The April Board of Directors Meeting has been scheduled for the 17th since the TMGA State Conference is April 24 – 27th.

I hope you all can attend the General Membership Meeting this month and that we will all meet up at the State Conference in April. Thank you all so much for everything you do for our Association.....



Wizzie's Wonderful World of Insects

Emerald Ash Borer

**Wizzie Brown,
Travis County AgriLife Extension
Entomologist**

Emerald ash borer, often referred to as EAB, is an exotic pest from Asia. This beetle is a serious threat to ash trees. Emerald ash borer was accidentally introduced into the United States and was found in Michigan in 2002. It has now spread to 33 states, including Texas. In May of 2016, four beetles were found in a trap located in NE Texas (Harrison County). In 2018, the beetles were confirmed in two new counties, Marion and Cass counties.

Adult females lay eggs on the bark of ash trees. Once eggs hatch, larvae bore into trees under the bark and cut off the water and nutrient conducting vessels. Larvae are creamy white, legless with a flattened body. Larvae are 1- 1 ½ inches in length when fully developed.

As an adult, emerald ash beetles are elongated and cylindrical, somewhat shaped like a bullet. Most notably, these beetles are bright, metallic green with reddish hues. Adults are small, about 1/2 inch in size. If the wings are removed or lifted, the upper side of the abdomen is bright coppery-red which can help differentiate this beetle from closely related species in Texas. Please note that there can be varying coloration- more blue or reddish instead of green.

Infested trees show canopy die back in the top one third of the canopy moving downward until the tree is bare. Epicormic shoots (leafy shoots coming off the trunk of the tree) may also be seen. Vertical fissures may appear on the bark and galleries may be able to be seen through openings. If bark is peeled off, serpentine galleries packed with frass may be seen. Adult beetles produce a D-shaped exit hole (1/8 inch diameter). Woodpeckers may cause damage to trees infested with EAB. Look for flaking bark and uneven holes caused by woodpeckers feeding on larvae and pupae.

If EAB activity is confirmed within an area, it is recommended that a systemic insecticide treatment is given to ash trees of high value.

If more than 50% of an infested ash tree crown remains, then treatment with a systemic insecticide may slow the attack. If less than 50% of an infested ash tree crown remains, the tree should be removed.

For more information on emerald ash borer within Texas see the following site: <https://fswweb.tamu.edu/eab/>

For more information or help with identification, contact Wizzie Brown, Texas A&M AgriLife Extension Service Program Specialist at 512.854.9600. Check out my blog at www.urban-ipm.blogspot.com

This work is supported by Crops Protection and Pest Management Competitive Grants Program [grant no. 2017-70006-27188 /project accession no. 1013905] from the USDA National Institute of Food and Agriculture.

The information given herein is for educational purposes only. Reference to commercial products or trade names is made with the understanding that no discrimination is intended and no endorsement by Texas A&M AgriLife Extension Service Extension or the Texas A&M AgriLife Research is implied. The Texas A&M AgriLife Extension Service provides equal access in its programs, activities, education and employment, without regard to race, color, sex, religion, national origin, disability, age, genetic information, veteran status, sexual orientation or gender identity.

TEXAS A&M
AGRI LIFE
EXTENSION

What's Been Happening...

February General Meeting

Photos by Randy Brown

The February general meeting presentation was given by Gary Slanga and Kathy Love. Gary gave a talk on Copyright Act of 1976 and Kathy talked about answering the public's telephone and email questions on various topics.



The February general meeting had a great attendance of 96 members. Several members enjoying the sweet treats.



Glenn Melton presents Barbara Ishikawa with her Green Thumb Award and gift card.



Refreshment Hosts for February included: Wayne Schirner, Glenn Melton, Bill Walker, Johnny Jones, Sylvia Maedgen and Debbie Harris.

What's Been Happening...

Herb Study - Essential Oils

Photos by Sylvia Maedgen

Sylvia Maedgen

Master Gardeners enjoyed a day of delightful scents and activities at the workshop on February 6th using a variety of essential oils. Activities included making loofa soap using goats milk and shea butter; spray using witch-hazel; hand cream using shea butter; and making a mini-arrangement using fresh herbs in a small glass bottle. The meeting room smelled heavenly at the end of the workshop. Some of the essential oils we learned about and used were lavender, lemon verbena, and patchouli.



We had fun today!



What's Been Happening...

Home & Garden Show and Kids Zone

Photos by Sylvia Maedgen



Sylvia Maedgen

Master Gardeners and Interns worked both booths at the Home & Garden Show on Feb. 23-24. We had 310 kids visit our 2 booths in the Kids Zone over the weekend. The seminars averaged 46 attendees per seminar. Over 600 packets of seeds were given out to the attendees on Saturday alone.



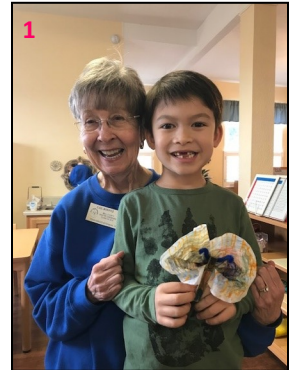
What's Been Happening...

Montessori-Temple

Photos by Gail Koontz

Gail Koontz

- Pic 1 - Gail Koontz with Wolfgang Gillmeister
- Pic 2 - Talking with the 6-9-year-olds as Mrs. Abraham listens also
- Pic 3 - Monarch eggs on Milkweed leaf
- Pic 4 - The butterflies created by Mrs. Abraham's class
- Pic 5 - Helping the 2-year-olds create their butterfly.



Marjorie Gillmeister

A Special Thank You to Gail Koontz for the artistic activity and lesson on The Lifecycle of a Butterfly. The students at Montessori Temple enjoyed that day with you very much!

Bonham Middle School-Temple

Marjorie Gillmeister

Photos by Marjorie Gillmeister

Special Thank You to Kathy Love for sharing these donated items from a couple on Fort Hood. Bonham Middle School Garden Club and Communities in Schools Counselor, Nancy Rodriguez, are most gracious for the supplies to start their garden which included a turning compost bin, tomato cages, wire fencing, and mesh weed cloth.



What's Been Happening...

Seed Saving Workday

Crystal Fisher

Photos by Crystal Fisher & Barbara Ishikawa

This was our Seed Saver's meeting in February. We had another meeting a couple of days after that.



We gave away over 600 packets of seeds on Saturday, February 23rd at the Home & Garden Show at the Bell County Expo. The next give away was at the Harker Heights seed swap on Saturday, March 2nd.



Member Spotlight...



What We Have Learned So Far...

Jan Stanfield

Master Gardener Interns have been busy, as all of you know that have gone before the current class. As a current class member I'm amazed with the wealth of knowledge that is shared each week. We are truly a blessed class of 2019.

Vegetable gardening is a hot topic in our area. I know many make their rounds to the nursery to google and awe at the tomatoes and other vegetable. Bob Gordon, Jerry Lewis and Wayne Schirner gave their expertise on this never-ending story of growing vegetables in our ever-changing Texas environment. Some will want to sign up for more advanced classes.

Karen Colwick shared her knowledge and experience about rainwater catchment. Karen brought the barrel and lots of visuals. That's my kind of teacher!! If I see it, I can make it. I'm married to an Aggie engineer, so when I shared the enthusiasm for wanting a rain barrel, my real life Tim the Tool man went into action. He now has a plan that I can't fully explain, but it will be connected to a drip irrigation system and that's all I need to know. Karen showed a visual circle graph that explained our water supply and I was surprised to know our world has 1% of water for consumption by consumers. That's still a lot of water, but the second graph showed how much water was spent on urban irrigation. That number is astounding. I hope we all are committed to using our water wisely.

John Sackett captured our attention with his presentation on soil, basic soil as John would say several times. I learned the difference between dirt and soil and that makes me smile. Bottom line we all understood the importance of the soil test and scientific information for improving soil. Most of us have clay soil and cannot dig very deep. John held our attention all afternoon and shared his wealth of knowledge that could be used as a home gardener and as a commercial field gardener.

Louann Hight and Wayne Schirner presented information about composting/using mulch, creating a custom soil mix and irrigation. Louann convinced many of us that we could compost. She made it seem easy. I had never heard of composting worms, but now I have some. It's great when a class can move the students to action. Anytime Wayne speaks, we all listen. His explanation on irrigation was very informative. He brought the hands on supplies to show.

Gary Slanga, our leader of new intern class, shared his knowledge and experience about fruit and nut trees. Pictures helped to clarify pruning. It was so interesting to learn about pruning the peach tree. Varieties play a very important part of the success of fruit and nut trees. I'm glad we have resources to help us remember. Sometimes knowing where to get the answer is as important as the answer.

Wizzie Brown was our guest speaker this week. She is as entertaining and she is knowledgeable about entomology. This was not an easy presentation for some to hear. I noticed some grimacing as she shared pictures of her entomology friends. Others were entertained by the little critters. Think we all left with a different appreciation of bugs in our backyard. Just like neighbors, some are friendly and some are not.



Member Spotlight...



What We Have Learned So Far...

Why Do We Say “Ugh” to the Bugs?

Laura Bridges

It was fun in class to hear “eewww” and “ick” from fellow interns during Wizzie Brown’s February 20th presentation. She’s an entomology specialist with TAMU and clearly loves bugs. I was wondering why bugs get such a visceral reaction from so many of us. I’ve always found them a thing of wonder. Even the cockroach, that I can admit is not totally endearing even to me, has some awesome qualities. Wouldn’t you like to hear one hiss? (check them out on YouTube--big as the palm of your hand--lots of protein!!) Do you wonder if it’s true that they will survive a nuclear holocaust? As hard as insects work and cooperate with each other, maybe the world would be better off!

It was fascinating to see the chart she had about how small the mammal population is compared to the insect one. Since everything eats something else, it seems the world would starve without our buggy friends. Shouldn’t we try to be friends?

Some things to consider if we were without them:

- ◆ No honey
- ◆ Forests would probably not exist or would certainly be less robust
- ◆ Birds and frogs would certainly starve.
- ◆ Forget about compost
- ◆ No cricket crackers (yes they make them, <https://cricketfood.com>)

One summer we came to Texas on vacation from Ohio. At our campground, there was a huge red ant hill. I would watch them everyday. Their home was over a yard and a half wide and they had walked in some areas so much that they had paths I could follow. Nothing like that in Ohio. Back in Ohio I found a walking stick. What wondrous camouflage! In Virginia, I had a “pet” praying mantis. She lived in the shrubbery in front of my

house. For two summers I fed her (probably her progeny the second year) ants squished on the end of a pine needle. She would grab it with her “hands” and would turn her head side to side, sort of like dogs when you talk to them. I swear we were making eye contact! I probably shouldn’t say this, but I would have loved to see her eat her mate!

Wizzie identified my new friend for me, Mr. Ox Beetle (of the rhinoceros beetle clan). Here’s his picture. Isn’t his exoskeleton handsome? How about that horn?!!! Only the males have them. I probably met him first last summer as a “baby” (in his larval state) when I turned over a log and found a huge white grub that I let be. Sure hope his progeny is back this summer as they help break down the organic matter in my yard.



So when you are out in your garden, monitoring for pests, take a minute to look around and admire arthropods. Consider planting a little extra for the bugs and not using a nuclear holocaust method of control. As we have learned, sometimes too late, all creatures have a purpose.

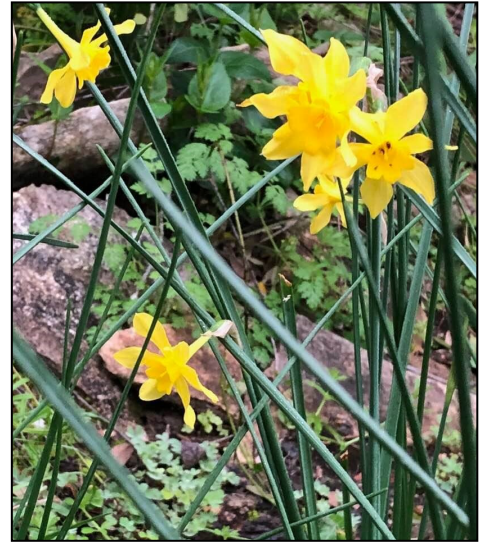
Interns, got something you want reported on? Please let me know. Laura Bridges, sharpeidogs@yahoo.com, cell: 254-624-7250

What's Happening In Your Yard?

Terrie Hahn

Photos by Terrie Hahn

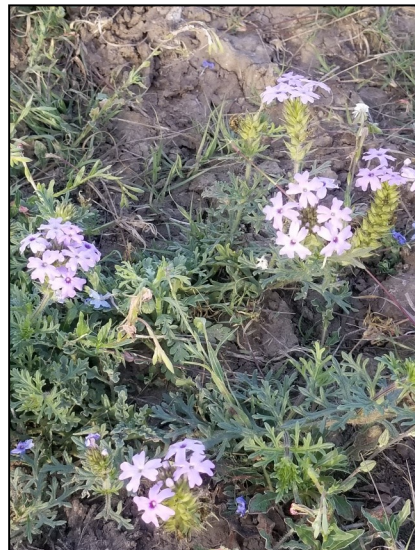
Here are pictures of what's blooming in Terrie's yard.



Sylvia Maedgen

Photos by Sylvia Maedgen

Things are starting to bloom at the deer lease in South Texas.



Tidbits of Info...

Article for Garden Myths Partner Program

Robert Pavlis

Date: Feb 2019

Title: Native plants are more drought-tolerant

The use of native plants has received a lot of press, and lots of information makes it sound as if they are a better choice for your garden. Much of this publicity is creating myths. One of the common beliefs is that native plants are easier to take care of and require less watering.

Let's think about this. Almost any location on Earth has a variety of growing conditions. Some areas are wetter and others are drier. Even in the desert, you will find some areas along a river that grow lush plants that need substantial water to do their best.

Check out the native plants in your local woods. The ones growing at the top of the hill can be drier than the ones at the bottom of the hill. Plants growing at the edge of the woods need more light than ones growing in the middle. All of this happens in a very small area, and all of the plants are native.

Pick the right native plant, and it will be drought-tolerant. Pick the wrong one, and it won't be.

The red cardinal flower (*Lobelia cardinalis*) is a local native perennial, but for some reason I just can't get it to overwinter in my garden. It is certainly not drought-tolerant, but even in a boggy spot it just will not grow for me.

The same goes for non-natives. If you pick drought-tolerant plants, they will be drought-tolerant. The country in which they grow naturally has nothing to do with it.

Written by Robert Pavlis, author of three books, , [Garden Myths Book 1 and 2](#) and [Building Natural Ponds](#).

Have a question for Robert – connect on his Facebook Group: Garden Fundamentals.

Optimum Soil Temps

Wayne Schirner

Here is a great link for a chart that shows optimum soil temps for germination of most vegetables.

<http://sacmg.ucanr.edu/files/164220.pdf>

Announcements...

Herb Study - Pretty Edible Flowers

Kim Pringle

Please join the Herb Study on Wednesday, April 3, 2019 from 9 to 11 am for a study of Pretty Edible Flowers. Homework on borage, calendula, dianthus, nasturtium, roses and violets. More details to follow.

24th Annual Herbal Forum - Round Top, Texas

March 15-16, 2019

It's not too late! Spend Friday and Saturday on Festival Hill. You will need to contact Festival Hill to see if overnight accommodations are still available on campus. You'll have two days to visit the plant sale and gift shop, and even take in a leisurely stroll in the gardens. A *reservation-only* lunch is available on Friday. Herbal Forum Registrants are invited to attend the *reservation-only* Presenters' Dinner in the Victorian-style Menke House on Friday evening, followed by a presentation of the movie, "Tea with Mussolini," in the masterfully restored Edythe Bates Old Chapel lecture hall. After your complimentary breakfast on Saturday morning (yoga is available too), you'll feel refreshed and ready to enjoy the forum." Registration cost is \$80.

Herbal Forum Registration opens Monday, January 7, at 9:00 am.
(<http://www.festivalhill.org/calendar/details.php?id=3184>)

The famous **Plant Sale** and **"Thyme Well Spent" Gift Shop** are open to the public from 9-5 on Friday and 8-5 on Saturday. No registration is required to come to the plant and gift sale. NOTE: Workshops are not being offered this year.

Tea
Our Herb for 2019



"Herb of Comfort and
Friendship"

In Memoriam

Stanford Passman - 1942 - 2019



The family of Stanford Passman
acknowledges with deep appreciation your
kind expression of sympathy.

*Thank you, Master Gardeners
for the many cards.
Stan always enjoyed our Christmas
parties and especially enjoyed
working the silent auction table at
the State conference.*
Elaine Passman
Clear of 2012



09/06/
STANFORD PASSMAN

September 24, 1941 - February 3, 2019

Announcements...

Gardening in Central Texas - March 21, 2019

Carol Morisset

It's time again for our annual presentation by Jerry Lewis and Bob Gordon to enlighten and entertain all of us to ensure that we have a successful growing spring vegetable season. Jerry and Bob are very experienced Master Gardeners who are very active in the Bell County Organization and the Killeen Municipal Court Gardens which provide thousands of pounds of produce to the Food Bank annually. This class is very popular and we currently have only space for 15 more registrations so if you plan on attending get your name in quickly. Class is located at Bell County Texas AgriLife Extension classroom located at 1605 N. Main in Belton from 6:30 to 8pm on Thursday March 21st. Seminars are free but a \$5 donation is accepted. There will be snacks provided and we will draw for prizes. Register at bellspeakers76513@gmail.com or if a BCMG online VMS.

Class is March 21, Thursday evening from 6:30 to 8 pm at the Bell County Texas Extension classroom located at 1605 N. Main in Belton. Classes are free but a \$5 donation is accepted. Seminars are limited to 45 participants, so early registration is recommended. Register at bellspeakers76513@gmail.com or if a BCMG on VMS. We will have prizes and snacks for everyone!!!

Upcoming Spring Plant Sale Workdays

Christy Reese

Be sure and check the VMS calendar for upcoming workdays at Wrights Nursery in Briggs, TX. Earn service hours for your work and travel time. Workdays may be on Thursdays and Fridays from approximately 9 am to 2 pm.

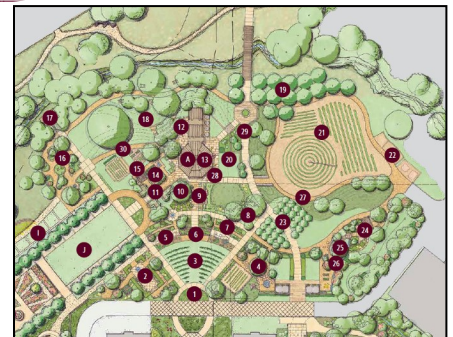
Spring Garden Tour

Jan George

We are going on a trip!!! Get on board for our Spring garden tour! We will leave the Extension office at 8:00 am, be there at 7:30 am, on Thursday, April 4, 2019 for College Station. Our first stop will be the Leach Teaching Gardens where we will have an Aggie student guide us through the Gardens. You can bring your lunch and have a picnic in the Gardens or there is a commons area a short walk from the Gardens that offers sandwiches, pizza, pasta, and etc. Our next stop will be the George H. W. Bush Presidential Library. This is a self guided tour but you can rent head phones. Our final stop will be at the Brazos Co. Master Gardener's Gardens and Arboretum. The cost will be \$18 which includes admission to Bush Library. I will collecting money at our March monthly meeting on March 13, 2019 or you can mail it to me at PO Box 882, Florence, TX 76527. Scarlot in our main office also has agreed to accept the money. We should be returning around 5-5:30 pm. Looking forward to seeing you for a fun filled day!!!



GEORGE H.W. BUSH
PRESIDENTIAL LIBRARY CENTER



Announcements...

March General Meeting

Kathy Love

The March General Meeting will present a program by Bill Walker on 'Organic Matter'.

Our refreshments will be hosted by Pam Dragoo, Elaine McSpedon, Bill Walker and Virginia Bargas. Come at 9:30 for our social and enjoy the Pot of Gold treats. The program will begin at 10:00 a.m. to be followed immediately thereafter by our business meeting.

Board of Director's Meeting

The March Board of Director's Meeting will be held on Wednesday, March 27th at 9 a.m. in the class/meeting room of the AgriLife Building. Please submit your agenda items to Janice Smith, Recording Secretary by Wednesday, March 20th.

Grounds Workdays

Johnny Jones and Tom Rennels

Here is the workday schedule for March.

March 6, 2019 CANCELLED Workday
March 13, 2019 8:00 a.m. Workday
March 20, 2019 8:00 a.m. Workday
March 27, 2019 8:00 a.m. Workday

In the event of rain, there will be No Workday.

Refreshment Hosts

Jane Van Praag

One more expression of no-fooling heart-felt gratitude to Sylvia Maedgen and her committee of Glenn Melton, Wayne Schirner, Debbie Harris, and Bill Walker for such a sweet, filling Valentine's Day repast for our February general meeting.

Our generous volunteers for this month are, in the order of sign-up: Pam Dragoo, Elaine McSpedon, Bill Walker and Virginia Bargas.

BCMGA's Herbal Study Group takes on April: so far our committee consists of Kim Pringle, Jeanne Richard, Betty Burkett, Janet Stein, Sylvia Maedgen, and yours truly.

Kathy Love, Stacye Parry, Pam Dragoo, Jo Carlsen, and once again myself will honor Mothers Day in May.

We still need volunteers for June through November. You don't have to wait to sign up on the sheets I'll have available at our next meeting; you can just send an e-mail to me at the address below.

Jane, your friendly neighborhood Refreshments Coordinator
jvanpraag@sbcglobal.net



Join Us!

Upcoming Events

Upcoming Advanced Training

- Mar. 13-15 Tree Care Advanced Training
Dallas - Cost \$175
Deadline to register - Feb. 15
- Mar. 14-15 Turfgrass Advanced Training
Conroe - Cost \$?
Deadline to register - Feb. ?
- Apr. 2-3 Budding & Grafting Advanced Training
Brookshire—Cost \$200
Deadline to register - Mar. 15
- Apr. 12-13 Plant Propagation Advanced Training
Fort Worth - Cost \$225
Deadline to register - Mar. 15
- May 16-18 Earth Kind® Advanced Training
Athens - Cost \$250
Deadline to register - May 1
- May 23-24 Turfgrass Advanced Training
Conroe - Cost \$?
Deadline to register - Apr. ?
- Jun. 12-14 Tree Care Advanced Training
Kerrville - Cost \$?
Deadline to register - May ?
- Aug. 13-15 Vegetables Advanced Training
San Antonio - Cost \$?
Deadline to register - Jul. ?
- Oct. 17-19 Greenhouse Management Advanced Training
Fort Worth - Cost \$?
Deadline to register - Sep. ?
- Ongoing Earth-Kind On-Line Master Gardener Training modules
Go to - <https://aggie-horticulture.tamu.edu/earthkind/training/>



Upcoming Extension Events

To Be Determined

Master Gardener Clinics

- Mar. 15 Ham Orchard Fruit & Berry Pruning Clinic
12 pm - 4 pm
Terrell - Cost \$15
Call 972-932-9069 or email sbburden@ag.tamu.edu to Pre-register



Officers

President	Glenn Melton	2019-2020
First Vice President	Kathy Love	2018-2019
Second Vice President	Bill Walker	2019-2020
Recording Secretary	Janice Smith	2019-2020
Treasurer	Gail Koontz	2018-2019

AgriLife Agent Lyle Zoeller

Board of Directors

Communications	Sylvia Maedgen
Facilities	Paul Carter & Karen Colwick
KMCCG	Edie Campbell
Membership	Gail Christian
New Class	Gary Slanga
Outreach	Christy Reese & Carol Morisset
Projects	Barbara Ishikawa & Stacye Parry
Youth	Marjorie Gillmeister

Contributing Writers and Photographers:

Laura Bridges	Johnny Jones	Kim Pringle
Randy Brown	Gail Koontz	Christy Reese
Wizzie Brown	Kathy Love	Tom Rennels
Crystal Fisher	Sylvia Maedgen	Wayne Schirner
Jan George	Glenn Melton	Jan Stanfield
Marjorie Gillmeister	Carol Morisset	Jane Van Praag
Terrie Hahn	Elaine Passman	
Barbara Ishikawa	Robert Pavlis	

Editor: Sylvia Maedgen

Please submit articles of less than 500 words for the Blooming Bell as Word documents. Photos should be sent separately in a folder through a link using OneDrive or Dropbox or in a zipped file. **Photos must be in the JPG format.** Also, do not text your photos. Email your documents and pictures to Sylvia Maedgen at:

txbikerchic7@gmail.com

Please do not send PDF documents.

BCMG Webmaster

Rachel Glass - glass.rachel@gmail.com

Please send your updates for the BCMG web site to Rachel.



CHECK OUT BCMGA FACEBOOK PAGE! GO TO

<https://www.facebook.com/BCMGA>

Bell County Master Gardener web site:

<https://txmg.org/bell/>

Texas Master Gardener Voluntary Management System

<https://texas.volunteersystem.org/UniversalLogin.cfm?logout=1>



1605 N. Main St.
Belton, Texas 76513
(254) 933-5305

A publication of the Bell County Master Gardener Association sponsored by Texas AgriLife Extension of Texas A & M University