

The Blooming Bell

October 2015



**Bell County
Master Gardener
Association**



Gail Pierce is
wondering how
big her pumpkin
will get!

Inside this edition:

| | |
|---|-----------|
| October 2015 Calendar | 2 |
| President's Corner/Save the Date | 3 |
| Three Sisters Garden | 4 |
| KMCCG | 6 |
| Fire Ant Treatments | 7 |
| Dragonflies and Damselflies | 8 |
| Plant Sale Extravaganza | 9 |
| First Detectors | 12 |
| September Happenings | 13 |
| Announcements | 14 |
| Upcoming Events | 15 |
| What's Happening in Your Yard | 18 |



| Sun | Mon | Tue | Wed | Thu | Fri | Sat |
|-----|-----------------------|-----|--|-----|--|---|
| | | | | 1 | 2 | 3 |
| 4 | 5 | 6 | 7 Work Day 8 am* Hamburger Wednesday | 8 | 9 | 10 Nature Fest |
| 11 | 12 Columbus Day | 13 | 14 Work Day 8 am* General meeting - 10:30 am Social time 10 am | 15 | 16 | 17 |
| 18 | 19 | 20 | 21 Work Day 8 am* | 22 | 23 | 24 |
| 25 | 26 | 27 | 28 Work Day 8 am* BOD Meeting 9 am New Class Commit- tee Meeting 10:15 | 29 | 30 Deadline for Award Nominations and Hour Re- porting 10-31 | 31  |
| | | | | | |  |

Upcoming Events: BCMG Christmas party December 3.

* in the event of rain, there will be No Workdays. Remember to record volunteer/education hours.
Banner photos of flowers at plant sale by Daisy Klassy.

The President's Corner

September was an interesting month. We had a successful plant sale. Over 40 Master Gardeners were on hand to help. Thanks to all of you who participated and a special thanks to Jan George and Carla Harmon for all their hard work. And to Betty Burkett who put together a great garage sale. We took in over \$600 on that sale alone.

We also had a very good turn out for the First Detector Specialist Training Course. Ten Bell County Master Gardeners and 16 Master Gardeners from other counties attended the course. It went very well, and a special thanks to Susan Terry, Mary Ann Everett, Louann Hight and Gail Christian for all their efforts to put this course together.

I failed to recognize Carla Harmon, Sophia Gomez, Bette Gilmore and Mary Lou Edmondson for the great spread of food they prepared for our last meeting on September 9th. They did a wonderful job of enticing us all to put on a few extra pounds.

We have several upcoming events on the calendar for which we need volunteers. The Temple Nature Fest on Oct 10th; the Bell County Water Symposium coming in November; and our Christmas Party on December 3rd. We will need several volunteers for the Professional Grounds Keepers Conference on January 12th. Also in that month is the Irrigation Conference on the 13th and the Crops conference on the 19th.

And a big one for us is the Home and Garden Show on February 26th through the 28th. The Bell County Youth Fair is also in February. As you can see there will be several opportunities for service hours during these events.

- Gary



Save the Date

Mark your calendars now! The 2015 Bell County Master Gardener Christmas Party will be Thursday, December 3, in the Special Events Room at the Bell County Expo Center. Social time begins at 6 p.m. and the meal will be served at 6:30 p.m. In addition to the catered meal, there will also be a salad bar and a dessert bar. If you can bring a salad, please contact Gail Koontz (gkoontz@hotmail.com). If you can bring a dessert, please contact Beverly and Vernon Chenoweth (chenbave@gmail.com; vernonchenoweth@sbcglobal.net). Tickets are \$15 per person if purchased by November 11. The cost at the door will be \$25 per person. What better way to begin our holiday celebrations than with Master Gardener friends!

- Gail Koontz, on behalf of the Christmas Party Planning Committee

Photo by Daisy Klassy

THREE SISTERS GARDEN

- Melinda Arriola

Several years ago, I read an article entitled "Three Sisters Garden." Naturally, I thought it was an article about three sisters who garden together. I couldn't have been further from the truth. The three sisters garden is a method of gardening developed by Native Americans to grow crops, which work together to ensure a bountiful harvest.

The idea is to plant three crops (sisters) that work well together. The first crop is sweet corn, the second crop, pole beans and the third, squash.

The corn gives the pole beans a trellis to climb, and the beans give the corn stability and provide support during windy conditions.

The beans also provide nitrogen to the garden and the squash shades the ground and acts as a mulch to keep the weeds to a minimum.

I planted my garden in a 4X12 foot raised bed. Ideally, you want to plant in an area of about 8-10 X 10 feet.

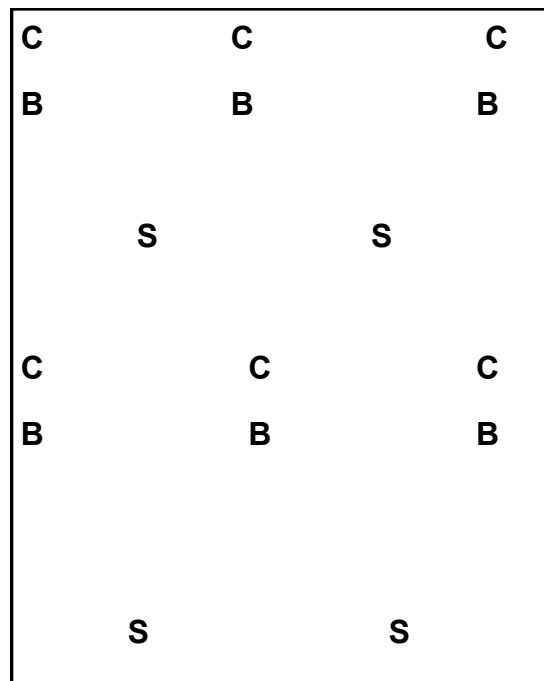
I started by planting my corn seeds on March 18, 2015. I used a sweet corn, but any tall growing variety will do. You must plant three rows minimum. This will help with pollination. When my corn was approximately 5 inches tall, I planted my beans (Kentucky Pole Beans) and squash seeds. I highly recommend trailing squash. The bush type will not receive enough sun and it will be difficult for the bees

to pollinate the plant. The rows looked a little like this diagram.

The corn seeds were planted 12 inches apart. I planted two seeds to ensure germination. I left the strongest and straightest stalk and gently removed the weaker plant. The beans were planted four inches from the corn stalk. The squash was planted between the bean and corn as indicated.

I checked on my garden daily for seed germination and replanted if there were no signs of squash or bean germination within days of their counter seeds. Squash and beans grow quickly.

Then came the rains. It rained and it rained. I feared plant mildew but was pleased to find that it never happened. The beans began to climb the corn. For the wayward vines, I placed a wooden skewer to give them direction towards the corn stalk. The squash

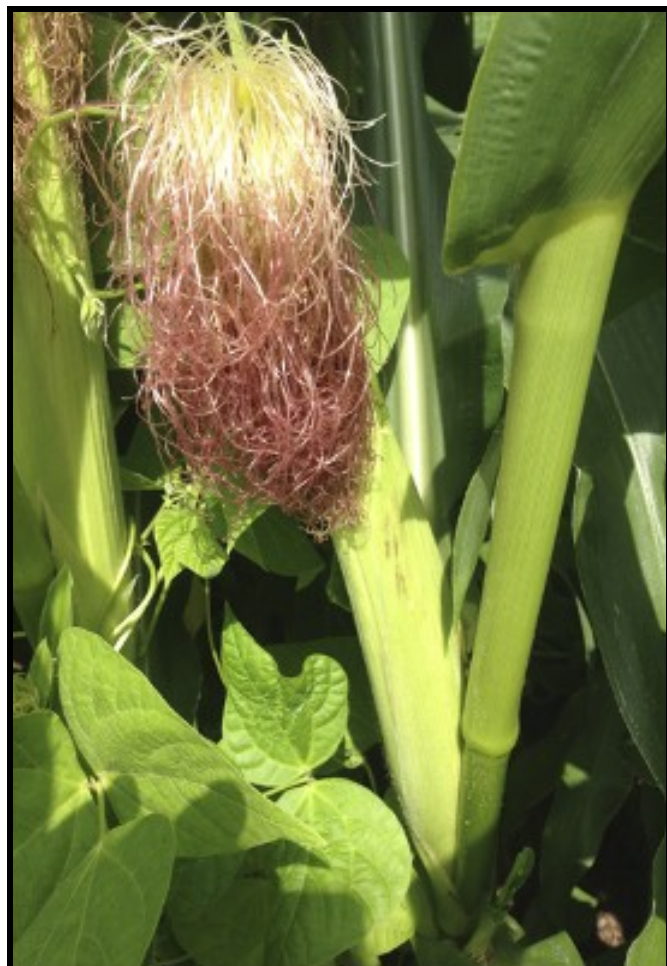


Continued on next page...

THREE SISTERS GARDEN...continued

grew without problem, but I watched for mildew and hungry insects.

Due to abundant rain in June, I rarely had to water. As the corn matures, you will see tassels as pictured here. The corn will begin to produce ears and you will see the silk at the top of the ears. The tassels contain the pollen. The tassels must send out the pollen and with the help of the wind, it pollinates



the silks, which contain a sticky substance for the pollen to adhere to.

Each silk will be a single kernel of corn. In the photo to the left, the top ear is properly pollinated. The bottom ear shows poor pollination.

Because the rain prevented the pollen from dispersing from the tassels, I had to hand pollinate.

I first cut a few strands from the tassel. I then brought it inside to dry out for a couple days. After the pollen was completely dry, I took it back out to the garden taking care to cover the bowl in which I stored the dry pollen, because the slightest wind will abort your efforts. I used a small, clean make-up brush to



Continued on next page...

THREE SISTERS GARDEN...continued

pick up pollen and gently wipe it on the silks at the top of the ears. I made a chart so I would know which ears I pollinated.

About 25 days after the corn silks appear, and they have turned brown and dry, you can harvest your corn. There will be one to two ears per stalk and the ears will feel plump and full. The beans and squash can be harvested according to the package directions.

There are several variations of planting a three sisters garden. This one worked well for me.



KMCCG

- Randy Brown

Always something going on over in Killeen in the Community Gardens!



And below Joyce Richardson and her husband, Danny planted a Desirable Pecan tree and put in the plaque in memory of Ursula Nanna.



Photos by Randy Brown and Joyce Richardson.



Wizzie's Wonderful World of Insects

Fire Ant Treatments

- Wizzie Brown, Travis County
AgriLife Extension Entomologist

It's the season to get out and treat fire ants to reduce the number that you see in the spring!

There are numerous ways to manage fire ants, but they are often broken into two categories- broadcast treatments and individual mound treatments. Individual mound treatments are used to treat one mound at a time and can be labor intensive and may result in



more pesticide being spread into the environment. Broadcast treatments will spread product (granular or bait) over a large area.

Individual mound treatments include pouring boiling water onto the mound, using insecticide mound drenches, spreading insecticide granules onto the mound and watering them in, sprinkling insecticidal dusts on top of the mound or using bait-formulated insecticides around the perimeter of the mound.

There are also many "home remedies," but be advised that many of these do not kill fire ants. Many home remedies make the fire ants move to a new location (often 1-2 feet away), but do not kill the ants.

Bait-formulated insecticides most often consist of a defatted corn cob grit coated with soybean oil; the

soybean oil is where the active ingredient (what kills the pest) is dissolved. Worker ants collect bait as a food source and take it back to the colony to share with other ants, including the queen. Depending on the active ingredient, the bait may cause the queen to die or be unable to produce viable eggs, which gradually kills off the colony. When using baits, results are often slower to observe when compared to individual mound treatments, but can provide 80-90% suppression for 12-18 months. A bonus to broadcasting baits is that the amount of active ingredient is generally very small, which places less chemical into the environment.

With any pesticide treatment, *read and follow all label instructions*. Make sure to water in the pesticide if the label instructs to do so. Failure to water in chemicals when recommended by the label does an inadequate job of killing the ants. Baits should not be watered in or used before a rainfall event; baits will not be picked up by ants if they get wet.

For more information or help with identification, contact Wizzie Brown, Texas A&M AgriLife Extension Service Program Specialist at 512.854.9600.

The information given herein is for educational purposes only. Reference to commercial products or trade names is made with the understanding that no discrimination is intended and no endorsement by Texas A&M AgriLife Extension Service Extension or the Texas A&M AgriLife Research is implied.

Extension programs serve people of all ages regardless of socioeconomic level, race, color, sex, religion, disability, or national origin.

TEXAS A&M
AGRI LIFE
EXTENSION

Dragonflies and Damselflies

Editor's Note: Pat Donica of the NPSOT/Williamson wrote the following story on the talk given by Dr. Abbott at their September monthly meeting. It was a terrific talk. If you ever have a chance to hear Dr. Abbott, make sure you take advantage of it. Thanks to NPSOT/Williamson and Pat Donica for sharing.

- Pat Donica, NPSOT/Williamson

Dr. John C. Abbott spoke about “Dragonflies & Damselflies of Texas”, sharing remarkable information and beautiful photography with an engaged audience. Dr. Abbott is Director of the Wild Basin Creative Research Center at St. Edwards University and the author of three books: Dragonflies and Damselflies of Texas and the South-Central United States, Damselflies of Texas, and Dragonflies of Texas.

We learned that dragonflies and damselflies spend most of their lives as nymphs, a stage that lasts 1 month to 8 years (!) while molting 8 to 17 times, and only a relatively short time as adults (averaging only 4 to 6 weeks). We saw video of an adult emerging out of a nymph. We learned that molting is traumatic as the new individual breaks out of its predecessor's exoskeleton. The newly emerged adult's color sorts out over several days as it hardens and color will change as it matures.

The short adult lifespan is focused on procreation. Who's hanging around the pond? You'll mostly find males. Females come around when they are ready to mate. As you might expect, there's considerable competition and some shenanigans going on to promote self-interest.

Nymphs and adults are predators – feeding on biting flies, mosquito larvae, and more. We saw video of a worm being grabbed at the bottom of a pond, and a photo where dinner was a small fish, incapacitated and nearly decapitated by a bite. Some prey upon other species of damselflies or dragonflies, and some prey upon their own species. A large dragonfly can even take down a hummingbird!

Dragonflies and damselflies are thermoregulated. When not flying, they may bask (exposing as much surface as possible to the sun) or obelisk

(abdomen pointed directly to sun to minimize exposure). Some might perch vertically or horizontally on a surface. Color change can indicate temperature. A particular species is bright blue when warm, dull grey when cool.

Huge eyes take up the majority of the head in these aerial predators, with a 360 degree view and up to 30,000 lenses per eye making them great motion detectors. (Their small short antennae are used for touching and tasting.) They see in color though for some colors they see with different intensities than humans – more blues/purples, less of reds/yellows. A video demonstrated how a dragonfly/damselfly would likely see a woman in a red dress in front of greenery.

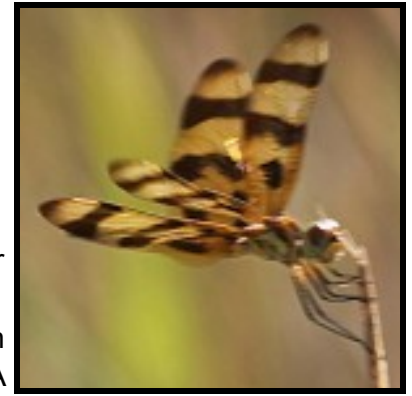
Only dragonflies, not damselflies, migrate and only *some* dragonflies migrate. In North America, about 16 species migrate between Canada and Mexico with research tending to focus on 5 main species. Our chances for seeing a migration are better along the coast but migration paths are unpredictable. Dr. Abbott has not seen a migration through our area.

There are 163 species of dragonflies in Texas out of 328 in the United States. There are 80 species of damselflies in Texas out of 139 in the United States. Most species are in “pretty good shape”. Some are endangered.

In response to a question about the impact of climate change, Dr. Abbott said insects with shorter lifespans are better off, that dragonflies and damselflies are very agile compared to most insects, and he believes they will be able to shift their ranges.

That's good news!

Copyright © 2015 Williamson County Chapter of the Native Plant Society of Texas. All rights reserved. Reprinted with permission.



Plant Sale Extravaganza!

- Jan George

The Fall plant sale was a great success! We have had very little moisture since early June; therefore, we didn't know what to expect. It was a very hot, dry day but people started arriving before 7:00 a.m., and we started closing up around 12:00 p.m., because we had very few plants left. We had 48 Master Gardeners sign in to work, and our greeters counted 380 customers. We couldn't ask for a better turn out! Betty Burkett did an outstanding job with the Gardener's Delight Garage Sale which sold \$627.00 in donated garden items. She and Laura Murphy put together two decorative pots with gardening items in them and they were raffled for \$98.00. The plant sale took in about \$400.00 more than last year. A big thanks goes out to all of you who made this plant sale a success. You are an amazing group of "Worker Bees"! Kathy Love has agreed to chair the Spring plant sale so you will be hearing from her soon! Again, thanks

for all you do for our community!



Plant Sale!



Plant Sale Photos by Daisy Klassy.



Plant Sale!



Texas Master Gardener Specialist - First Detectors

- Gail Koontz

Pictured here are 26 Master Gardeners from Bastrop, Bell, Caldwell, Fayette, Johnson, Leon, Midland, McLennan, Milam, Walker, and Wood Counties who came together Monday and Tuesday, September 21 and 22, in Belton for Specialist Training as First Detectors.

The National Plant Diagnostic Network was established in 2002 to respond to the need for enhanced agricultural security through protecting the health and productivity of plants in agriculture and natural ecosystems in the U.S. The First Detector Training is a national program established by the NPDN to promote the early detection of invasive and exotic pathogens and pests through education and enlisting the help of citizen "scientists". Master Gardener Specialists are volunteers who enhance their knowledge in specific areas and volunteer their time to gain that knowledge (20 Hours).

The Texas MG Specialist – First Detector program is a federally funded Farm Bill project, enabling the development and preparation of materials. The 2015 program will focus on two emerging pest/pathogen: Brown Marmorated Stink Bug (BMSB), an exotic invasive insect pest that has occasionally been found in Texas but has not been shown to be established here and *Phytophthora ramorum* aka Sudden Oak Death, which has been found in parts of Texas (nursery plants), but not known to be established or present in nature here. A secondary pathogen of interest will be Rose Rosette Virus, causing Rose Rosette Disease which is devastating roses in the Dallas-Fort Worth region, but not found in other parts of Texas.

We all got to practice observation, surveillance and surveying skills and got to see how we might use these skills in our service projects of trapping stink bugs and surveying nurseries for SOD.

Our trainers (also pictured) were Dr. Kevin Ong, Ashley Brake, Bill Ree, and Dr. David Appel from Texas A&M University. Ten BCMGs participated in the two-day training session and had a delightful time making new friends with the 16 from other counties.

A special thank you to Lyle Zoeller and to the BCMG team of Mary Ann Everett, Louann Hight, Gary Slanga and Susan Terry who helped organize our first Specialist Training in Bell County, and helped us survive the two days of training.



Photos by Gail Christian

September Happenings

- Randy Brown

Right: Education Building insulation and electrical was put in. Below: Ilene Miller conducts first Christmas Party Committee meeting of 2015. Twenty-three in attendance.



Above and to the right: Refreshment Crew; Jan George goes over final discussions on Plant Sale; Wayne Schirner of 2015 Class did a presentation on Fall Gardening and his Square Foot gardens research he is doing for Vegetable Specialist; 56 MG's attended September's General meeting.



Announcements

October General Meeting

- Randy Brown

Come to the October General Meeting at 10:30 a.m., Social Time is 10:00 a.m.

Upcoming Business

- Bernie Hurta

2015 Awards

Nomination forms for our local awards will be available at the October Monthly Meeting. The awards that are given out at the Christmas Party are:

Three Golden Trowel Awards (for service to our community) six Green Thumb Awards (service to our organization), and the New Master Gardener of the Year Award (from the 2015 New Class). Nominees must be certified Master Gardeners and have the 50 service hours and 12 education hours recorded to be considered. The deadline is October 31st. Forms are also available on our website. Completed forms are to be given to Bernie Hurta by mail, email (bhurta@gmail.com), or leave them with Scarlot in the Extension office. Let's honor those who have worked so hard for our organization and our community.

Service Hour Certificates

Please have your service hours recorded by **October 31st**. This will give the Extension Office staff time to print the certificates in time for the December 3rd Christmas party. Remember this time period is from **June 1, 2014 to October 31st, 2015** because of the change in the BCMGA fiscal year.

5, 10 & 15 Year Badges and Pins

The following classes are up for 5, 10, and 15 year badges and pins: 2011, 2006, and 2001. In order to receive your new badges and pin, you must have your 50 service hours and 12 education hours recorded. Please have the hours recorded by October 31st. The badges and pins will be presented at the December 3rd Christmas Party. If you have any questions, please contact Bernie Hurta.

New Class Committee Meeting

The next New Class Committee meeting will be Wednesday, **October 28th after the October BOD meeting (around 10:15)**. One of the topics on the agenda will be discussing ideas for the 2016 New Class Field Trip on April 27th. If anyone has some ideas, please submit them to the Field Trip Committee consisting of Walter Ponder, Amazon Roberts, Sandy Lenehan, and Barbara Dalby.

Grounds Workdays

- Walter Ponder

Here is the Workday schedule for October:

8:00 a.m. October 7, 2015 Workday
10:00 a.m. October 7, 2015 Burger Wednesday
8:00 a.m. October 14, 2015 Workday
8:00 a.m. October 21, 2015 Workday
8:00 a.m. October 28, 2015 Workday

Please note new start time.

NPSOT Hosts NLCP Workshops

Native Plant Society of Texas/Williamson is excited to be hosting Native Plant Landscape Certification Program (NLCP) workshops in Georgetown, TX this fall. Our first workshop, Native Landscape Certification Program Level 1, is scheduled for Saturday, October 31, 2015, from 8 am to 4 pm and the second, NLCP 2 is offered Saturday, November 14 from 8 am to 4 pm. More information about NLCP can be found from the program website: <http://npsot.org/wp/nlcp>. This counts as Advanced Training for BCMG's.

**CHECK OUT BCMGA FACEBOOK
PAGE! GO TO**

<https://www.facebook.com/BCMGA>

Upcoming Events

- Pam Dragoo

Hello Gardeners,

Saturday October 3rd, at 10 am, head to Backbone Valley Nursery in Marble Falls for a free program from Jessica Robertson on **"Worm Composting"**. <http://www.backbonevalleynursery.com/events/list/>

Saturday, October 10th "Celebrate Native Plant Week in the Highland Lakes" Start at the Horseshoe Bay City Hall Park and get some great ideas for your own yard, buy native plants at our semi-annual Native Plant Sale and tour two beautiful home gardens (\$5 for tour). 9 AM to 1 PM. There is a free speaker presentation from Carrie McLaughlin on "Milkweeds, Monarchs and More" at 10:00 AM <http://www.yantislakesidegardens.com/npsot>

October 8, 2015

Backyard Basics/Plant Propagation

10:00 am- 12:00 pm, Texas A&M AgriLife Extension Service-Travis County, 1600-B Smith Rd.

Learn how to make new plants for your yard through propagation methods such as rooting slips and cuttings. In this workshop you will assemble a self-watering propagator and select cuttings to grow new plants. All supplies, instructions, and cuttings will be provided for each participant. Master Gardener Sue King, a Plant Propagation Specialist, is a retired school librarian, an avid soup-maker, and a life-long gardener. Master Gardener Carolyn Turman found propagating plants using cuttings as an easy and inexpensive way to get new plants. \$30.00 <https://agriliferegister.tamu.edu/TravisCounty%20>

Friday, October 9th, 2015

Nature Fest 2015 Central Texas Nature Fest Returns to Temple in October

Kick-off the event on **Friday, October 9th from 7:30 p.m. – 10:00 p.m. with a FREE Night Hike and Star Party.**

The Night Hike, taking place from 7:30 p.m. – 8:30 p.m., will lead families on a search for nocturnal movements in the forest and learn about the sights, sounds and senses they may experience outside at night. Families are encouraged to stay after the Night Hike concludes and join the Central Texas Astronomi-

cal Society for a star gazing party from 8:30 p.m. – 10:00 p.m. Sit back and relax as you learn about constellations, stars, planets and more! Guests should dress appropriately for fall weather, bring a folding chair, and a red lens flashlight (Red flashlights can be made by putting red plastic over the lens of an ordinary flashlight.).

Then on **Saturday, October 10th from 11:00 a.m. – 5:00 p.m.** enjoy this year's Central Texas Nature Fest. Central Texas Nature Fest is a fun, educational event for the whole family focusing on the rich diversity of wildlife, habitat, history and heritage of Central Texas. Don't miss Target Practice with Cabela's; Bird Watching 101 with the Audubon Society; Feral Hog Management with Texas Parks and Wildlife; How to Build a Fire with Boy Scouts; or the live snakes from Franklin HERPS. Come learn how to prepare for your next adventure or ways to manage your land with wildlife in mind.

October 10 and 11, 2015 Plant Sale

Lady Bird Johnson Wildflower Center and NPSOT. Members only, **October 9th**

Wednesday, October 14th Master Gardener Violet Carson will present **"Planting Bulbs for Fall Color"** in a free Highland Lakes Master Gardener Green Thumb Program at 12 noon at the Kingsland Library, 125 W Polk, Kingsland, TX. www.yantislakesidegardens.com/events

Saturday, October 17th, Celebrate National Wildlife Refuge Week at Balcones Canyonlands National Wildlife Refuge. Enjoy free, fun family programs. <http://www.yantislakesidegardens.com/events>



Upcoming Events...continued

October 12, 2015

Austin Organic Gardeners Meeting

Spiritual Gardens

6:30 pm 2220 Barton Springs Rd., Zilker Gardens

Please join us for our meeting on Monday, October 12th with John Dromgoole, founder and owner of The Natural Gardener. John will discuss spiritual gardens including the historical background and ceremonial uses of specific plants as well as creating sacred spaces in your garden.

The Austin Organic Gardeners' Club meets at the Austin Area Garden Center, 2220 Barton Springs Rd, in Zilker Botanical Gardens. Doors open at 6:30 pm for the opportunity to meet, mingle, and ask questions of local gardeners; club business begins at 7 pm, followed by our guest speaker's presentation. www.austinorganicgardeners.org.

October 17, 2015

Inside Austin Gardens Tour

The Travis County MG's Association's tour provides a rare look inside six private gardens and one public experimental garden that demonstrate realistic, sustainable gardening practices for Central Texas.

The tour's theme remains: "For Gardeners. By Gardeners," focusing on the practical beauty, variety and stamina of native and well-adapted plants in the garden. Each garden has a theme that demonstrates a particular set of characteristics Central Texas gardeners are likely to encounter in their own gardens.

Flashy Natives – bright and colorful
Sunbathing Natives – brutal, full sun
Shady Natives – shade and under trees
Death-Defying Natives – especially hardy, minimal water
Cottage Natives – Texas tough classics
Oh Deer! – deer-resistant, not deer-proof
Native Testing Ground – new varieties and proven winners

Now in its 8th year, the one-day event features behind-the-scenes looks at gardens of Travis County Master Gardeners. As many as 2,000 people typically attend. Tickets may be purchased in advance via the website or at the garden sites.

www.INSIDEAustinGardens.org .

October 17th, 2015, 9 a.m. - 5 p.m.

Garden Conservancy Austin TX Open Day

<https://www.gardenconservancy.org/events/all-events/austin-open-day>

October 25, 2015

Afternoon in the Garden

Straw Bale Gardening; Minimal Maintenance and Maximum Production

1:00 pm – 4:00 pm Sunday

Having difficulty bending over to dig, weed, plant, and other garden chores? Are you experiencing poor soils or no soil but you have concrete or asphalt space available? Straw bale gardening allows anyone to grow a bountiful garden in almost any location that is highly productive while being much less labor intensive. Not to mention, it's a festive addition that makes a great focal point through the fall and winter. Towards the end of spring, recycle the bales into mulch and compost to help you perennials through the summer. Harvesting potatoes means simply knocking over a bale and picking up the produce- with no digging required! Come get your hands dirty and plant a straw bale, learn different watering techniques, how to condition the bales, and how weeding is nearly non-existent through this method. Make corn dollies for the youngsters to take home and learn about a traditional custom practiced by cultures from around the world to ensure a bountiful harvest the following year.

SmartScape Related Events:

www.txsmartscape.com/

Tour of Coppell

10/3/2015 9:00 am - 1:00 pm (Free) Helping Hands Garden, 255 Parkway Blvd, Coppell, TX <http://www.coppellcommunitygarden.org/>

Native Plant Society of Texas Plant Sale

10/3/2015 10:00 am - 2:00 pm Randol Mill Park, 1901 W Randol Mill Road, Arlington TX

Learn how to Compost

10/10/2015 9:30 am - 12 pm (\$15 includes book) Mountain View College, 4849 West Illinois Avenue, Dallas, TX 75211 <http://www.eventbrite.com/e/composting-101-make-compost-at-home-tickets-17567915107>

Saving from a Rainy Day, Making a Rain Barrel

10/15/2015 6:30 pm - 8:30 pm (\$50 per barrel) Texas A&M AgriLife Research and Extension Center, Building C, 17360 Coit Road, Dallas, Texas 75252 <http://dallas.tamu.edu/courses/2015/october-15-2015-saving-from-a-rainy-day-making-a-rain-barrel/>

Don't Miss:

Special Presentation:

NIGHT & HIKE & STAR PARTY

Friday, 10.9.2015
7:30pm-10pm

Free Admission



Central Texas Master Naturalists Presents:

A day packed full of activities and exhibits for the whole family to explore and experience Central Texas wildlife and wild places. Plus, grab lunch from your favorite food truck.

CentralTexasNatureFest.org
\$5 per vehicle

2015 Central Texas NATURE FEST

nature, look into it



October 10, 2015 11am-5pm


Bend of the River 7915 South General Bruce Drive Temple, TX 76501

TEXAS A&M
AGRI LIFE
EXTENSION

Walker County Master Gardeners Present

Texas Pollinators Garden Symposium

Friday, October 16, 2015
Veterans Conference Center
455 Hwy 75,
Huntsville, TX 77340
8:00 am to 5:00 pm




Registration
\$75
(Lunch and t-shirt Included)



at:
www.walkercountymastergardeners.org

or contact
the AgriLife Extension office
936-435-2426

At the Door
\$95
(Lunch and t-shirt Included)



Join us for our 6th Annual Butterfly Festival
October 17th
WCMGA Demonstration Gardens,
102 Tam Road, Huntsville TX
Starts at 8:00 am

Nolan Creek/South Nolan Creek Partners Meeting

Killeen, TX **October 8, 2015**: The Texas Commission on Environmental Quality (TCEQ), Texas Institute for Applied Environmental Research (TIAER) and City of Killeen cordially invite you to a Nolan Creek Watershed Partnership meeting. We are collaborating with local citizens, agencies, and municipalities within the watershed to identify sources and design an educational program to improve stream water quality. Currently, portions of Nolan Creek/South Nolan Creek do not meet Texas water quality standards due to elevated bacteria concentrations.

At the meeting, you will have the opportunity to hear updates on water quality monitoring along the creek, particularly with regard to bacteria levels. Additionally, an update on potential sources will be presented and steps in moving towards watershed protection planning for Nolan Creek/South Nolan Creek.

Because decisions concerning the water quality of Nolan Creek/South Nolan Creek affect all landowners, citizens, industries, and municipalities within the watershed, your participation is important. Local stakeholders are key to improving water quality. The meeting will be held on **October 8, 2015 from 6:00pm – 8:00pm**, at the City of Killeen Transportation Services Building located at 3201 W.S. Young Drive, Killeen, TX 76541. **For more information contact Anne McFarland at 254-968-9581 or mcfarla@tiaer.tarleton.edu** or visit our website at <http://www.killeentexas.gov/nolancreekwatershed>.

What's Happening in Your Yard

Okra, Okra, Okra!!!

- Gail Pierce

I harvest okra everyday; Praying Mantis on Okra.



Alaskan Cabbage!

- Laura Murphy

On our way home from Alaska.

Cabbage in center of photo weighs 106 lb., this year's pumpkin-976 lbs.... Smaller than some years.



What's Happening in Your Yard

- Vivian Rush

This is the rose that I bought at the last MG plant sale. Also, I love to see the morning glories climbing up over bushes especially when they are not flowering, like the viburnums in the background. There are also others which are flowering like the yellow bells, lantana and indigo. Finally, I've got lemon grass and flowering oleander by my house.



What's Happening in Your Yard

- Daisy Klassy

These are photos of some of the flowers on the plants for sale at the Plant Sale.



Officers

| | |
|-------------------------|----------------|
| President | Gary Slanga |
| First Vice President | Randy Brown |
| Second Vice President | Bernie Hurta |
| Recording Secretary | Pat Johnson |
| Corresponding Secretary | Pat Allen |
| Treasurer | Gail Christian |

Directors

| | |
|------------------|-------------------------------|
| Youth Programs | Mary Ann Everett |
| New Class | Fran Sheppard |
| Landscape | Carla Harmon Walter Ponder |
| KMCCG | Edie Campbell |
| Outreach | Susan Terry |
| Awards | Bernie Hurta |
| Webmaster | Louann Hight |
| State Conference | Gary Slanga |
| AgriLife Agent | Lyle Zoeller |

Contributing Writers and Photographers:

Gary Slanga
Gail Koontz
Melinda Woods Arriola
Randy Brown
Wizzie Brown
Gail Christian
Jan George
Daisy Klassy
Bernie Hurta
Walter Ponder
Gail Pierce
Laura Murphy
Vivian Rush

Columnist: Pam Dragoo

Editor:

Terrie Hahn

*Please submit articles for the Blooming Bell as Word Documents with **photos separate as JPG files** to Terrie Hahn at:*

moompie45@hotmail.com
Please do not send PDF documents.

A publication of the Bell County Master Gardener
Association sponsored by Texas AgriLife Extension of
Texas A & M University

1605 N. Main St.
Belton, Texas 76513
(254) 933-5305



TEXAS A&M
AGRI LIFE
EXTENSION