



The Blooming Bell

Bell County Master Gardeners Association

February 2006, Newsletter

Monthly Meeting Wednesday, February 8, 2006, 11:00 a.m.

The Blooming

**Bell County Extension Office
1605 N. Main St., Belton, Texas 76513**

Opening: Harriet Jackson

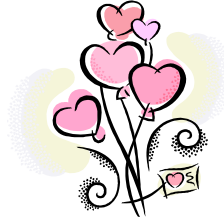
Speaker: Jeanne Richard ~ Hormones

Refreshments:

**Cookies; Kay Marshall, Neil Cochran
Drinks; Laverne Adams**

*It's not too late to contact Carol Holcombe to volunteer
For February & March refreshments – (254) 773-7203 or e-mail echolm@sbcglobal.net*

EVENTS SCHEDULE



- Belton Greenhouse
Workdays,
Wed. & Thurs., 9 am,

Belton

- Burger Wednesday, 1st
Wednesday
- Home & Garden Show,
Feb 25-26
- Tomato/Pepper Sale,
Mar 11th
- Spring Garden Tour,
Apr 22nd
- Spring Seminar &
Plant Sale,
8am-10am, Apr 29,

2006

- Fall Vegetable Sale 8-
10am, Aug 5th
- Fall Garden Tour, Oct
14, 2006

- Fall Seminar & Plant
Sale,
9am-3pm, Oct 21,
2006

Spring Yard Tour

It's that time again to be thinking about putting your yard on the spring yard tour. This year it will be April 22, 2006 from 9:00 a.m. to 4:00 p.m. There will be no money to collect but we will have brochures that folks can bring to the plant sale the following weekend and get a dollar off their purchases. This is a great way to get some of those volunteer hours and you get to meet lots of really enthusiastic gardeners and mingle with other master gardeners. Won't you give it a thought? Call or email Mary Ann Everett at 773-9576 or pma451@sbcglobal.net.

On the Look Out:

Donations of Time and Talent:

Mary Ann Everett is looking for Master Gardeners or new class members willing to share their gardens with the public during the Spring Garden Tour on Saturday,

April 22nd. Please contact her at pma4514@sbcglobal.net or (254) 773-9546 if you are interested.

Greenhouse News

Burger Wednesday

If you are participating in the upcoming Burger Wednesday, and can bring any of the following; (one

package of buns, dessert drinks, or potato salad) please e-mail Denise at oldham@hot.rr.com to get in on that there is bound to be something to interest everyone.

Items Needed

The beginning to interest everyone. wagons for customers to carry plant purchases to their cars on plant sale days. Yard sale fans, please keep your eyes open! We are also looking for anyone willing to donate a storage shed (approximately 10' x 20') and would be willing to disassemble and/or move the building if necessary. Please consider sharing the bounty when digging and dividing perennials. Contact Sandy Street for instructions before bringing in the plants.

Vegetable Garden

The vegetable garden is has been planted with onions and two types of garlic. Future plantings will include radishes,

carrots, turnips, beets, parsley, cilantro, bush beans, leeks, pole beans, chives,

Veg. Garden Contd.

brussel sprouts, broccoli, cauliflower, peppers, peanuts, sweet potatoes, irish potatoes, tomatoes, cotton, okra, marigolds, basil, cantaloupe, honey dew melons, watermelons, and sweet corn.



Come out and find your niche.

Tomato/Pepper Sale

Don't forget the tomato/pepper sale from 8:00 – 12:00. The plant sale will be set up in the Extension Office's parking lot. A seminar on spring vegetable gardening will be presented at 9:30 in the Extension office conference room.

2006 Texas Master Gardener Conference

The 2006 Texas Master Gardener Conference "Sharing Our Garden Heritage" will be held from Thursday, May 4th through Saturday May 6th at Texas A&M University. The goals for this

Toppling Potatoes and the
 into margarine. Make crumbles of above 3
 gardening ingredients and put on top of sweet
 potatoes. Bake in 350 oven for 25 to 30
 minutes. Put marshmallows
 on top of sweet potatoes and put in oven
 until lightly browned.

through Texas Cooperative
 Extension, TAMU, and
 beyond. Master Gardener
 organizations will be
 provided the opportunity to
 showcase their successes
 and expand the network of
 connections between
 organizations. For more
 info, visit the Texas Master
 Gardener Website at
www.texasmastergardeners.com
 or call (979) 823-0129.

Landscape Design
Study Course II,
Series XX February 20-
21, 2006

Dr. William C. Welch announces the second in
 the latest Landscape Design Study Course series
 which is offered in the Bryan-College Station
 area. Garden Club members, Master Gardeners,
 nurserymen and others who are interested in
 furthering their knowledge of landscape design
 are welcome to attend. Christ United Methodist
 Church, 2401 State Highway 6, College Station,
 TX 77845.

Recipe Special Request
Sweet Potato Casserole

by Gardine White

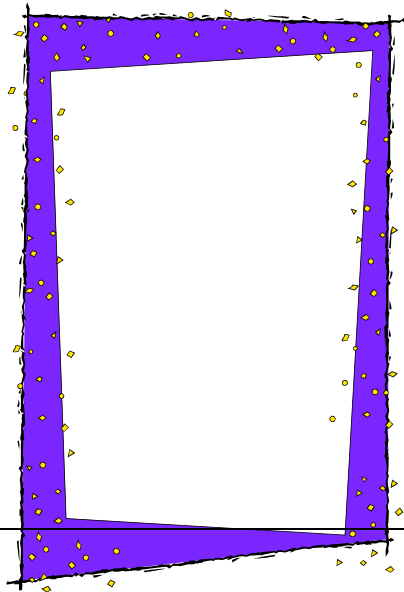
Fresh sweet potatoes or canned sweet
 potatoes can be used also. Boil fresh
 sweet potatoes until done and mash
 them. Add: margarine, brown sugar, and
 milk. Add the amount you want of
 margarine and brown sugar. Add
 enough milk to make the sweet potatoes
 as thick as you want them to be. I added
 the above 3 ingredients together and
 mixed them to suit my taste.

Condolences

*Please keep these
 families in your
 thoughts and
 prayers.*

*Jan Anderson's
 father passed away
 Wednesday night,
 January 4th, 2006.*

*Laura Jo Fojtasek's
 mother passed away
 Monday, January
 2nd, 2006. She was
 96.*



Home & Garden Show ~

Speaker

- ~~Schedule~~ and yards from fire. on will present a seminar on composting.
- Bob Gordon and Emily Butts will present a seminar on oak wilt in Central Texas.
- Sandy Street and Louise Oldham will present a seminar on water

Sunday, February 26th

- Neil Cochran will present a seminar on Earth Kind Roses.
- Deborah Martin will present a seminar on preparing your garden for spring.
- Mary Hargita will present a seminar on propagating African Violets and Begonias.

- ***Sandy Street is still looking for one more speaker*** to present a 30-45 minute seminar followed by a Q&A period at the Home & Garden Show on Saturday, Feb.25th.Contact her at sandystreet@direcway.com if you are interested.

Come out and support our Master Gardener's seminar presentations at the Bell County Exposition Center's Home and Garden Show Saturday and Sunday, February 25th and 26th. This is a great way to earn some of those education hours! We will also be manning an "***Ask a Master Gardener***" booth at the show. Our focus for the show will be on education and public awareness. We will not be taking our plants as we have in the past. We will be having seminars and handouts, but our focus will be on the public bringing questions for us to answer. I will be bringing a sign up sheet to the February general membership meeting. I will need three or four certified members to work two-hour shifts Saturday and Sunday. Thanks for all your help and support, Sandy Street.

Speaker Schedule Saturday, February 25th

- Charles Newsome will present a fire wise seminar concerning protecting our homes, property

Home & Garden Show and Speaker Schedule



Three Critical Hours!

During a BBQ a friend stumbled and took a little fall - she assured everyone that she was fine (they offered to call paramedics) and just tripped over a brick because of her new shoes. They got her cleaned up and got her a new plate of food - while she appeared a bit shaken up, Ingrid went about enjoying herself the rest of the evening. Ingrid's husband called later telling everyone that his wife had been taken to the hospital - (at 6:00pm, Ingrid passed away.) She had suffered a stroke at the BBQ - had they known how to identify the signs of a stroke perhaps Ingrid would be with us today. --- A neurologist says that if he can get to a stroke victim within 3 hours he can totally reverse the effects of a stroke...totally. He said the trick was getting a stroke

recognized, diagnosed and getting to the patient within 3 hours, which is tough.

RECOGNIZING A STROKE

Sometimes symptoms of a stroke are difficult to identify. Unfortunately, the lack of awareness spells disaster. The stroke victim may suffer brain damage when people nearby fail to recognize the symptoms of a stroke.

Now doctors say a bystander can recognize a stroke by asking three simple questions:

1. *Ask the individual to SMILE.
2. *Ask him or her to RAISE BOTH ARMS.
3. *Ask the person to SPEAK A SIMPLE SENTENCE (Coherently) (i.e. It is sunny out today)

If he or she has trouble with any of these tasks, call 9-1-1 immediately and describe the symptoms to the dispatcher. After discovering that a group of non-medical volunteers could identify facial weakness, arm weakness and speech problems, researchers urged the general public to learn the three questions. They presented their conclusions at the American Stroke Association's annual meeting last February. Widespread use of this test could result in prompt diagnosis and treatment of

the stroke and prevent brain damage.

**Lowes Part-time
Employment – Master
Gardener Consultant**

Bayer Advanced Company is *currently recruiting capable people with a Master Gardener, horticulture or landscape background* for part time employment on weekends beginning April 22, 2006, and extending for 10 weeks. I am looking for knowledgeable people to work in a designated Lowes Home Improvement center on Saturday for 6 hours and Sunday for 4 hours. Compensation is competitive and includes a bonus when the employee completes the 10-week program. There is some flexibility to complete the 10-week assignment within an 11-week period. In-store activities include one on one interaction with consumers and making product recommendations to solve their lawn and gardening questions. We are currently looking for weekend consultants in the following Lowe's locations: Lubbock, Frisco, South Arlington, Bryan, Hurst, Denton, Temple, Midland, Mesquite, and Tyler. If you

B.C.M.G.A.

Bell County Extension Office

1605 N. Main St., Belton, Texas 76513

are interested you may e-mail Scott at gsdaniell@bellsouth.net or call me at 770-489-5060, or 770 653-1774. There will be a required one-day training session which will be reimbursed (for their time).



Newsletter Staff

Editor: Jeanne Richard
(254) 986-3454
Jeannerichard@direcway.com

Reporting & Production:
Karla Tomaka
(254) 698-3367
kstomaka@aol.com

Jean Kitchens
(254) 771-2942
Jeankitchens1@aol.com

