



Inside this edition:

November Calendar, President's Corner

Edible Landscape, Killeen Farmer's Market

Fall Garden Tour

Teaching at the Elementary School

Q & A, Announcements

What's Happening in Your Yard?

Photo by Randy Brown



Sun	Mon	Tue	Wed	Thu	Fri	Sat
				1 New Building meeting 9 am	2	3
4	5	6 Vote Today!	7 Work Day Grounds Committee Meeting, Plant Sale Meeting Soup/Chili Wednesday 11 am Bring Christmas Party Auction Items	8	9	10
11	12	13	14 Work Day General Meeting, Composting, 11 am Deadline for Christmas Dinner Reservations at \$12.00	15	16	17
18	19	20	21		23	24
25	26	27	28 Board of Directors Meeting 9 am New Class Orientation 1 - 4 pm	29 Christmas Party 	30	

Upcoming dates: December Board of Directors Meeting, December 12

Banner photo by Carol Runyan

Turkey image from: <http://www.theqshack.com>

Christmas image: Simon Howden-free images.com

The President's Corner

The Master Gardener calendar was filled during October. Besides a school career day, plant sale at the Killeen Farmers Market, the public introduction of the future Bend of the River Garden, and public seminars on compost and drip irrigation, we hosted a Fall Garden Tour. Thanks to Beth Buhl and her committee for a successful garden tour and great publicity prior to and after the event. The last day of the month, October 31st will be clean up day at Whistle Stop Park.

November 3rd, the Master gardeners will be participating in a Girl Scout Journey weekend along with the Master Naturalist and Angler Ed groups to assist scouts of all ages in earning badges. Master Gardeners will be working with Jr. Girl Scouts to help them earn a gardening badge. In the process of preparing for this event, I found that as early as 1913, Girl Scouts were involved with gardening.

The topic for the November monthly meeting, November 14, will be composting. Master Gardeners from our local chapter will be presenting the program. Composting is a valuable topic for all gardeners. If you are not composting, the program might get you started, and if you are composting, you will get a few new tips.

We still have openings in the New Class of 2013. Orientation for the new class will be Wednesday, November 28th at 1:00pm. However, if you know of someone interested in becoming a Master Gardener, we can accept them until the first class meeting. Along with the new class, we will be offering a propagation class this spring. It will have a different format from previous years, but will be open to new class members as well as those of us who would like an update. Topics and teachers will vary with each session. Information will soon be available on enrolling for one session of a propagation class or multiple classes.

The holiday season is about to begin. The Master Gardener Christmas party will be on Thursday, November 29th. Make your reservation no later than November 14th. The cost is \$12.00 per person, but will be \$20.00 per person at the door. The party committee is taking donations for the silent auction. Please think about what you might donate for the auction.

There will not be a December monthly meeting as it is tradition that our annual Christmas party is the monthly meeting. The December board meeting will be held December 12th. This is earlier in the month due to the Christmas holiday. Please try to attend this board meeting as we wrap up 2012 and plan for 2013.

We have received a contract for our new facility. Sierra Construction Company has offered a contract price of \$44,101.00. This is the complete job. If you are aware of concrete, materials and labor costs, then you know this is very reasonable. They are not charging us for labor. Sierra Construction is currently building a large facility for Bell County.

Over the last few days, I, as well as others have been reviewing the contract, asking questions, and making notes. We have been fortunate to have the assistance of the Bell county contract manager during these negotiations. He will continue to monitor and assist where necessary. We are very close to moving forward. With that in mind, if you have not made your contribution to the building fund, please do so. Remember that whatever you feel you can give is valuable to Master Gardeners. Your donation is confidential. We are in the FIRST phase of the project. The organization will need funds to purchase a small greenhouse, rain water harvesting equipment, landscaping and add conveniences to the building. Plant sales and garden tours will provide some of the funds needed in the future, but member contributions will be necessary to complete additional plans.



Thanksgiving is just around the corner. As you consider what you are thankful for, remember our neighbors at Ft. Hood who will be away from their families this holiday season and those in our county and country who are less fortunate. I hope you all have an enjoyable day with family and friends...Happy Thanksgiving.....Laura

Photo from: <http://blog.busbank.com/top-10-reasons-to-visit-a-pumpkin-patch-this-fall/>

Edible Landscape

- Rick E. Schroeder

(This is the fourth installment of this series.)

In the first article we introduced the concept of an edible landscape; in the second and third articles we discussed specific edible plants. By now I know you are as excited as I am about edible plants. So I want to introduce a person that has a great deal of experience in this area.

Linda Runyon, PO Box 83, Shiloh, NJ 08353 has authored a book, "The Essential Wild Food Survival Guide," and authors a newsletter, "Of the Field," that is essential to your continued mastery of this subject. She has dozens of years experience and the book and newsletter are easy to read.

Even if you do not purchase the inexpensive book you can subscribe to the newsletter and it is free; Linda@OfTheField.com, www.OfTheField.com. The newsletter covers specific plants, has recipes, tips for drying and instructions for freezing your crops. Some of her most recent recipes are Clover Soup, Amaranth Vegetable Bread, Lamb's Quarter Soup, Mullein Root Tea and Rose Hip Jam. Her recipes will open a whole new world, especially when you can pick the ingredients from your own yard or in the fields and woods of Texas.

Tip of the month: When you read her book or newsletter remember she is from the Northeast so don't expect to find everything here in Texas.

Remember: If you can't eat it, don't plant it.

Killeen Farmer's Market

- Gail Christian

Some of the Master Gardener's took some plants from the Plant Sale that hadn't sold to the Killeen Farmer's Market on October 6.



Fall Garden Tour

This fall, there were 4 residences and 2 public areas on the Garden Tour.

Ursula Nanna's gardens in Killeen featured natives, succulents/cacti and rain water collection.

The photos on this page and the next 5 pages were taken by Gail Christian, Randy Brown, Carol Runyan and Terrie Hahn.

Ursula Nanna's Garden



Killeen Community Gardens



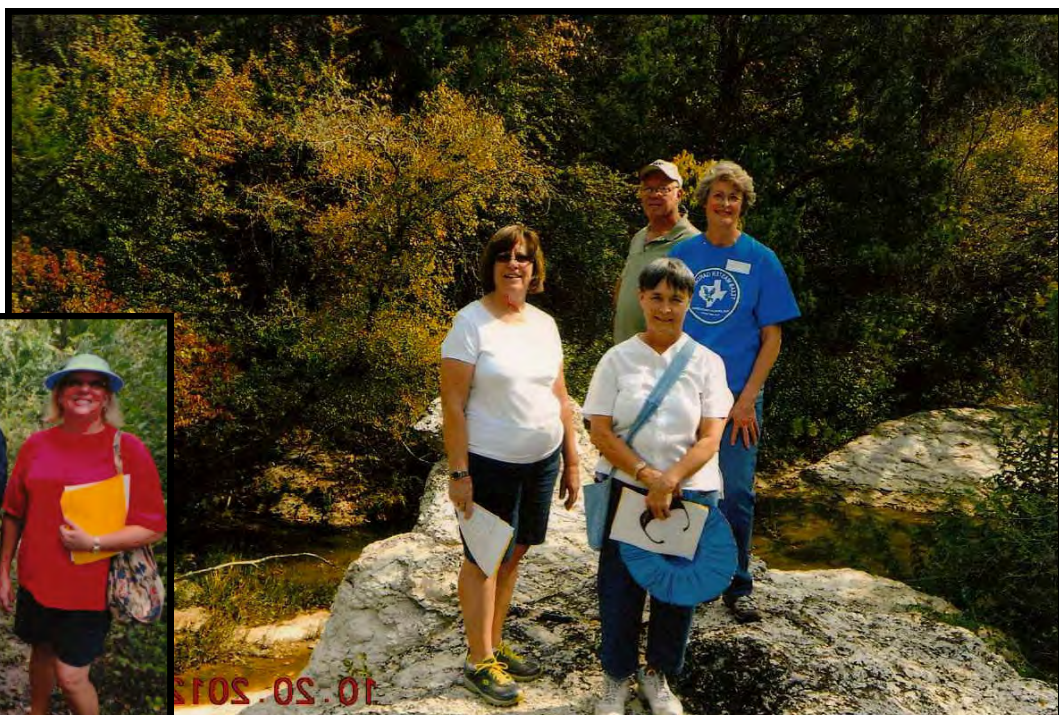
The Killeen Gardens offered looks at vegetable gardening, Earthkind plants, succulents and raised beds of herbs and blooming plants. Bob Gordon was giving hints on gardening and tomato clinics.



Raye Virginia Allen's Garden



Raye Virginia Allen's Temple property called, "Green Acres," dates from 1834. At the beginning of each hour, she described the Friar's Creek Trail Preserve, a wildlife habitat and bird sanctuary.





Louann Hight's garden in Temple featured an abundance of veggies and a keyhole garden. Gary Slanga was on hand all day answering questions about insects.



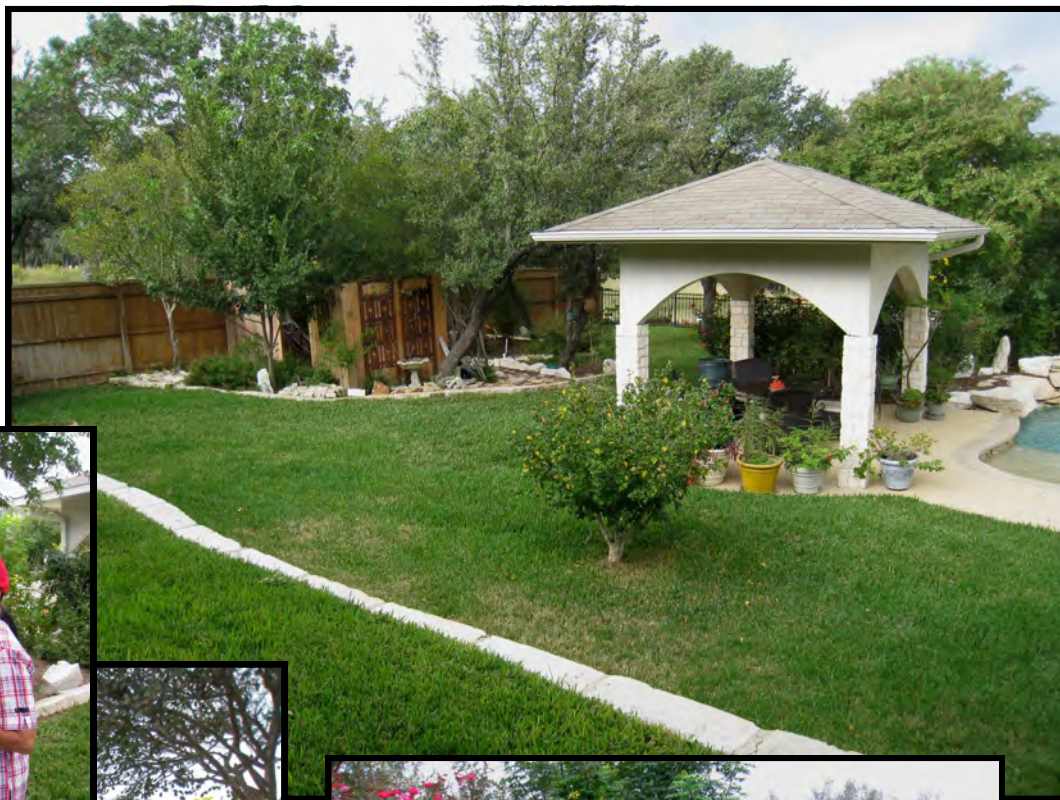
AgriLife Extension Center

The Agrilife Extension Center in Belton featured the demonstration beds and Composting discussions.



Sue Morgan's Garden

Sue Morgan's gardens in Belton featured native plants, grasses, and perennials. Beekeeping was discussed and garden items sold here.



Garden Tour Volunteers' Lunch



Teaching at the Elementary School

- Gail Christian

Gary and Mary Ann were at Hays Branch Elementary on Oct 12th. I took a couple of fast pictures of them. It was for a science day. The sign on the classroom door called them the Horticultural Division of Master Gardeners. We were also doing some Angler Education under the Master Gardeners new Aquatic Division.



Albino Deer Sighted

- Mary Lew Quesinberry

We saw this albino deer running along the access road on I35, north of Salado October 27th. It was in the company of a sibling whose spots had just faded out.



Q & A

Editor's note: This is a new column for Questions and Answers. When I get a question from a MG, I'll put it out there for other MG's to answer and publish the answer for everyone to benefit from it. Please send your questions and answers to me at moom-pie45@hotmail.com or call me at 512-863-9837.

And last month's question from:

- Rick Schroeder

The plant came up by itself. The vine is over 75 long and has climbed to the top of a cedar tree that is close by. Fruit is hanging 30 feet up in the cedar tree as well as along lower portions of the vine. The fruit is 18 inches in length, one inch at the neck and three inches wide at the tip.

The fruit (left), and the vine below which has covered the top of the garden (the picture is of the vine that is supported by netting 10 feet over the garden)

What is it?

When cut open it is white inside.



And the answer is:

- Gary Slanga

The Luffa Sponge Gourd

***Luffa aegyptia*(*L. scylindrica*)**

This looks very much like the Luffa (or Loofa) gourd. It belongs to the Cucurbitaceae or cucumber family. This is a unique gourd in that the luffa bath sponges are made from this vegetable. Believe it or not, be-

cause of its fibrous vascular tissue, it can also be used for packing material, filters and various other decorating crafts.

Planting luffas from seed takes a little patience because they are slow to germinate.

Seeds

should be scarified and soaked over night before planting. Luffas take longer to grow than most gourds, up to 140 days and mature later than other gourds. This gourd is also cold sensitive but loves hot weather. The gourd can be grown on the ground but does much better if allowed to climb. But the trellis has to be sturdy since the vines can reach well over fifteen feet in length. Fruit will be 12 to 18 inches long and can weigh up to three pounds or more.

For use as a vegetable, pick the fruit when it is very small, six inches or so. The vegetable is great in stews, soups or can be used like summer squash.

The gourds mature late in summer or early fall. They will turn yellow or brown when mature. Mature fruit is necessary for producing the organic bath sponges that are sold. Leave the gourd on the vine for as long as possible but harvest before the first frost.

I hope that this plant is the Luffa gourd because of the many craft uses for the dried spongy flesh of this fruit. For much more information on this unique gourd or for instructions on how to process the flesh for other uses, see the web sites below:



<http://www.caes.uga.edu/extension/cobb/anr/Documents/luffa.pdf>

<http://www.extension.umn.edu/distribution/horticulture/M1231.html>



Q & A

Questions for next month: Do Tarantula's hibernate during the winter?



And the photos below are of the same flowers. The one on the left is how humans view the flower. What insect views flowers as depicted in the photo on the right?



Photo above by
Werner Hahn

Both images © Bjørn Rørslett/NN taken from http://www.naturfotograf.com/UV_POTE_ANS.html

FYI

Talk on Drought's impact on Trees

Native Plant Society of Texas/Williamson has a meeting next month that may be of interest:

November 8, 2012, 7 pm at the Georgetown Public Library, 2nd floor.

The Heat is On: Drought and Impacts on the Urban Forest with Rob Grotty, Texas Forest Service

The drought off 2011 had a major impact on urban forest ecosystems across Texas, causing public concern for the health of our urban forests. Join Forester Rob Grotty as he focuses on the drought and what it means for the outlook of the urban forest in Williamson County. Rob will recommend sustainable steps we can take to nurture our landscapes.

Earthworm Trivia

- Maritza Kincaid

I got this interesting bit of information from Texas Gardeners SEEDS E-Newsletter: Did you know..... European earthworms came to this country with settlers in potted plants, soil used as ship's ballast, embedded in wagon wheels and the hooves of livestock. They spread across the country as quickly as the settlers themselves did. Today, the earthworm population in a typical American backyard is likely to be made up mostly of European worms. *Source: Wicked Bugs by Amy Stewart.*

Announcements

November Monthly Meeting

- **Bernie Hurta**

The monthly meeting program for **November 14th** is "Composting". Mary Ann Everett, Lou Ann Hight, and B. A. McDevitt will present the program.

Grounds Committee Upcoming Dates

- **Brenda Albro**

The Grounds Committee will have a **Work Day** on **November 7th** followed by a **Planning Meeting** for the winter months. Carla will have a **Plant Sale Meeting** as well. This is also **Burger Wednesday**, so plan to bring some sort of soup or chili and eat with us. It will be a full morning and we are looking forward to seeing all of you. We will also have a **Work Day** on the **14th of November** and not return until **December 5th** because of the Holidays. If there are changes we will send out an email to all Master Gardeners. Thanks again for all you have done to make the grounds look so good around the AgriLife Building.

Stories Needed

- **Mary Lew Quesinberry**

Dear Master Gardeners,

Share your gardening tips, passions, interests with our community. Send 300 words, written in Ariel to Candy Mullen candylane@taptrain.com

Candy will edit your article and forward to Lyle to be sent to the local newspapers in the Tip of the Week section of the Friday edition of the Temple Daily Telegram and the Saturday edition of the Killeen Daily Herald. They will be available on our website as well.

Come to the Christmas Party

Don't forget to make your reservations for the BCMGA Christmas Party which will be held

Thursday, November 29 at 6pm.

We will again gather at the Bell Co Expo, in the upstairs special events room.

Entree choices are

**Cranberry Stuffed Pork Loin OR
Raspberry Chipotle Roasted Chicken.**

Cost for the meal is \$12.00.

Last day to make reservations will be **Wednesday, November 14th** (our regular monthly meeting day). **After the 14th**, or at the door the **cost will be \$20**, so please make your reservations in advance.

If you mail your reservation, please note which entree you would like.

You may mail your reservation to me:

**Kathy Patterson, 9081 S. Whitehall Rd.,
Temple, TX 76504**

Questions?? call my cell 254-931-1661

Hope to see you there!!

Kathy Patterson

P.S. Don't forget donations for the silent auction.

Christmas Party Auction - from Maritza Kincaid

All Master Gardeners are encouraged to support our Silent Auction by contributing something you have made or baked, or a gift basket, gardening book or garden art, Christmas items, jewelry, gift certificate from an area business, or any item which you think a gardener might like and bid on. Please complete a bid form to attach to your item which lists the item, donor and the value of the item. You may bring your donations to the Extension Office and give them to Scarlett, bring them the first Wednesday of November and give them to a member of the Christmas Committee, or call or email Ilene Miller at 254- 778-4369 or mmiller007@hotmail.com to make arrangements for pickup of the item. All donations are needed no later than Wednesday, November 28th.

What's Happening in Your Yard?

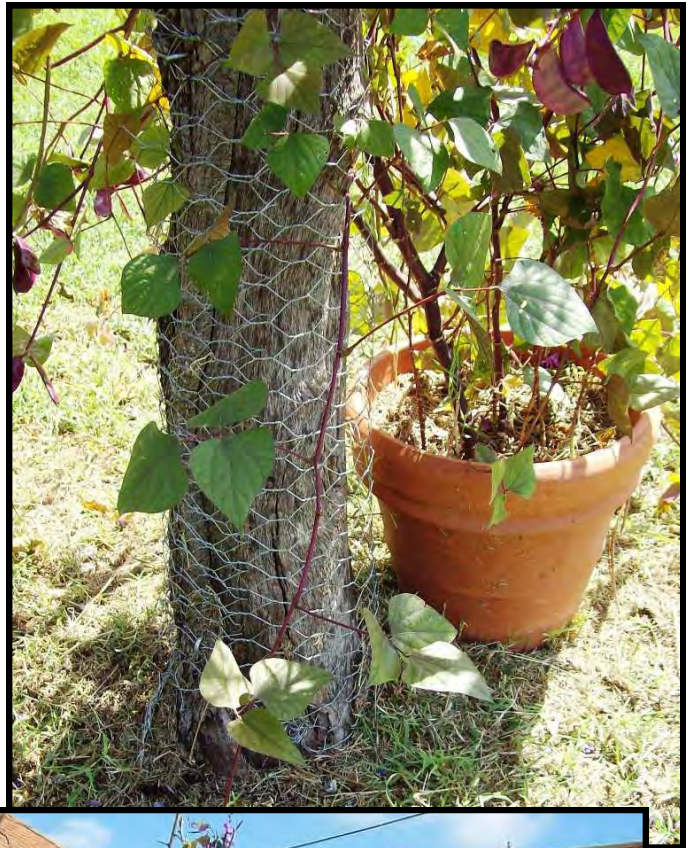
- Beverly Wickersham

Dead Trees, Birds, and Vines

Two trees in my backyard have been used as “bird feeder trees” since we built our home many years ago. When they finally gave up in fight with the caliche that subtends the soil in some areas of our back yard, I could not bear to cut them down. They are close enough to my kitchen windows and back porch so that I can easily identify the numerous species of birds that come to the feeders I continue to hang on the dead limbs.

This year I experimented with growing the Purple Hyacinth Bean vine in a pot at the base of each tree. The vine, with its lush leaves, purple flowers and purple seed pods, greatly improved the view. Next spring I will plant the seeds of this colorful annual in a bed that surrounds the tree. The feeders will still hang unobstructed for the birds, and the trees will be beautiful once more.

We nailed a 36” wide roll of poultry netting around the base of the tree to give support to the vines until they reach the tree limbs.



What's Happening in Your Yard?



Sophia, Brenda and Don Digging Up Sweet Potatoes

- Brenda Albro

Sophia Gomez planted Sweet Potato Shoots in July this year just to see if the plants would produce. Sophia, as well as Don Wyatt and the rest of us were pleasantly surprised when she harvested enough to share with Master Gardeners.

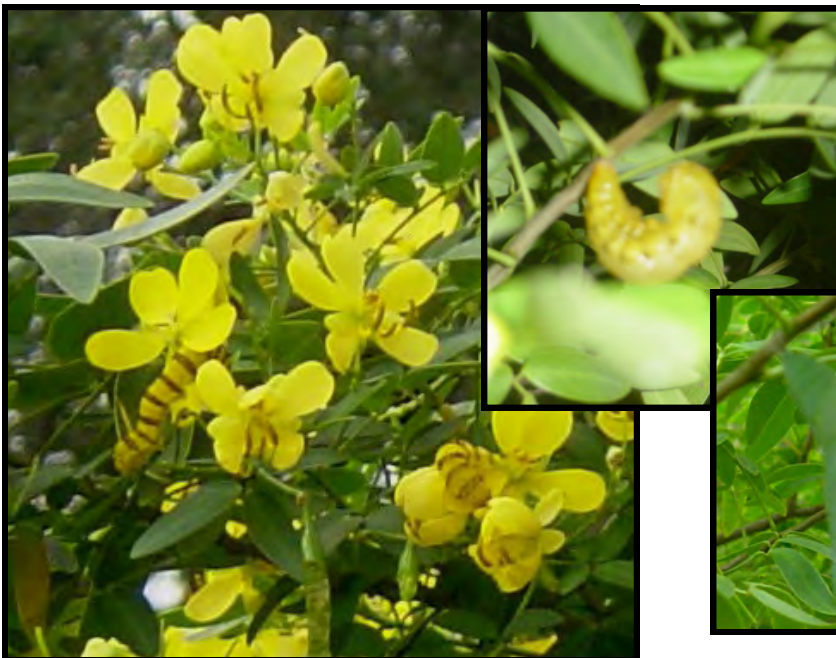


- Gail Christian

Sophia, Brenda and Don had a great time digging up the sweet potatoes. It was like a treasure hunt, they didn't know what they would find in each mound. Don actually made the potato slips for planting. It was a neat experiment.

Life of a Butterfly

- Terrie Hahn



Our Flowering Senna trees were blooming like crazy this fall and were covered with these yellow with black bands caterpillars. The other photos show the transition to butterfly. We think this is an Orange Barred Sulphur Butterfly.

What's Happening in Your Yard?

Most Asked About Rose - "Carefree Celebration"

- Louann Hight

Many people on the Garden Tour asked about a rose I have. Well, I found the name of the mystery rose. It is a Carefree Celebration and it is a member of the Knock-out family (that explains why I had it planted with the other knockouts). The following are photos and description from the internet of the same rose.

This large shrub from the breeder of The Knock Out® Rose shares the same superior disease resistance and flower power that are the trade signatures of Bill Radler's new creations. The latest addition in our popular Care-free series stands apart in the landscape with its unique color which is even stronger in hot, humid climates.

Top photo from <http://www.conard-pyle.com/>

Bottom photo from <http://www.landscape-design-advice.com/easy-to-grow-roses.html>



Everything is Blooming

- Carol Runyan

Below: Butterflies covered my Blue Mist and the right, the Spider Lilies were in full bloom.



Officers and Directors 2011- 2012

President	Laura Murphy
First Vice President	Bernie Hurta
Second Vice President	Jerry Lewis
Recording Secretary	Myra Crenshaw
Corresponding Secretary	Peg Fleet
Treasurer	Don Wyatt

Directors

Garden Tour	Margaret Leigh
JMG	Pearl Fellingham
New Class	Fran Sheppard
Outreach	Don Gold
Grounds & Maintenance	Sophia Gomez
Greenhouse	Mel Myers
AgriLife Agent	Lyle Zoeller Randall Rakowitz

Contributing Writers:

Laura Murphy
Gail Christian
Gary Slanga
Mary Lew Quesinberry
Bernie Hurta
Rick E. Schroeder
Beverly Wickersham
Brenda Albro
Louann Hight
Carol Runyan
Maritza Kincaid
Terrie Hahn

Contributing Photographers:

Randy Brown
Gail Christian
Carol Runyan
Mary Lew Quesinberry
Rick Schroeder
Beverly Wickersham
Werner Hahn
Terrie Hahn

Editor:

Terrie Hahn

Proofreader:

Werner Hahn

A publication of the Bell County Master Gardener
Association sponsored by Texas AgriLife Extension of
Texas A & M University

1605 N. Main St.
Belton, Texas 76513
(254) 933-5305



Cover photo by Randy Brown from Ursula Nanna's
Garden.

Banner photo by Carol Runyan of her Oxblood Lilies
or Schoolhouse Lilies.

Please submit articles and photos for the Blooming
Bell to Terrie Hahn at:

moompie45@hotmail.com

**321 Logan Ranch Rd.
Georgetown, TX 78628**