

The Blooming Bell

December 2014



**Bell County
Master Gardener
Association**



Above: Mockingbird watching to make sure I don't cut off any of the branches in its yaupon. They protect their winter food sources and they get very unhappy if you get too close.

Photo by Terrie Hahn

Inside this edition:

December 2014 Calendar	2
President's Corner	3
Naturally Derived Pesticides	4
Water Symposium	5
Q & A	7
Announcements/General Meeting	8
What's Happening in Your Yard	9



Sun	Mon	Tue	Wed	Thu	Fri	Sat
	1	2	3	4 Christmas Party 6 pm Expo Center	5	6
7	8	9	10 Board of Directors meeting 9 am Guest speaker from the City of Belton	11	12	13
14	15	16	17	18	19	20
21	22	23	24	25 	26	27
28	29	30	31 Welcome 2015!			

Upcoming Dates: New Class starts January 7th Home and Garden Show Feb. 20-22, 2015

Remember to record volunteer/education hours. ²

The President's Corner

Well November has come and gone. Hope everyone had a great Thanksgiving day. I am certainly thankful for all the hard working master gardeners. You folks are what make this organization one of the best in Texas. We had a great turn out for the November general membership meeting. About 60 members were there, almost standing room only. It's great to see so many getting involved with our activities. We had a great presentation on the Killeen Municipal Court Gardens. What an eye opener to see all the produce they grow for the soup kitchens in the Killeen area. Thanks to Randy Brown for the great slide show and a BIG thanks to Edie Campbell and all the master gardeners who make that garden the success that it is.

We had several master gardeners participate in the 14th annual Water symposium on the 18th. Carla Harmon along with Fran Sheppard and Gail Christian did a great job supplying plants, which were given away as door prizes, and manning the MG table where we gave out several publications. The bottom line on water is that we are not out of the drought yet. Ground water levels are still low and soil moisture has not recovered yet.

We had another great turn out for the new intern class orientation. We have a new group of enthusiastic students waiting to join our organization. Thanks to Jerry Lewis, Mary Ann Everett, Fran Sheppard and everyone else for their hard work putting this class together.

We have our Christmas party and December general membership meeting on December 4th. This is an important meeting as we intend to vote on changing our fiscal year to match the calendar year. Hope to see you all there. And for our December 10th board of directors meeting we will have a special guest from the city of Belton to solicit our help with establishing a community garden in Heritage Park. I hope many of you will be able to attend and hear what he has to say.

There are several other events that Lyle Zoeller has coming up in January. Since he is short on office help, we as master gardeners usually provide assistance at these events. It is a great way to get service hours. The first is the Professional Grounds Keepers Conference on the 13th of Jan. and Lyle will need 12-15 people to help with registration. On the 14th is the Irrigation Conference and the 20th is the Crops Conference. All three held at the Expo Center. Anyone who is willing to help at these events let me know and I will provide the details.

So thanks again for all the hard work. We still have bigger and better things ahead.

- Gary



Fall color in Diane Calderwood's garden the end of October.

Wizzie's Wonderful World of Insects

Mode of Action of Some Naturally-Derived Pesticides

- Wizzie Brown, Travis County
AgriLife Extension Entomologist

While many people utilize pesticides to help manage a variety of insect pests, they may not always know how the pesticides work. Knowing the mode of action can help the pesticide user to make more sound decisions about which pesticide to use in a particular situation.

Insecticidal soap is commonly made of potassium salts of fatty acids and works only on contact with pests, leaving little to no residual on plants once the product is dry. This product works by disrupting the structure and permeability of the cell membranes and cause cell contents to leak from damaged cells leading to death. Insecticidal soaps are most effective on small, soft bodied insects and may cause phytotoxicity on some plants (check label before using).

Diatomaceous earth/ silicon dioxide/ silica gel all are made from crushed shells of diatoms (small, single-celled algae). These products act as a desiccant and remove the waxy coating found on insects leading to water loss and death. These also work best on soft-bodied insects.

Horticultural oils are usually made from highly refined petroleum oil or vegetable oils. There are two kinds, dormant- to be used when plants are NOT growing- and summer or year-round oils to be used during the growing season. Summer/ year-round oils tend to be lighter than dormant oils. Horticultural oils work by coating the insect or eggs with oil and smothering them. Oils tend to work well on small, soft-bodied insects. Before using horticultural oils, check the label for phytotoxicity of certain plants.

Sulfur is one of the oldest known pesticides that is still used. The mode of action is unknown, but the product is typically used for disease control as well as to control mites, psyllids and thrips. Take caution when using sulfur in hot, dry weather as plant damage can occur. Sulfur should not be used with horticultural oils as the combination can kill plants.

Azadirachtin (neem) works as a feeding deterrent and a growth regulator. The growth regulator effect makes the insect unable to molt into the next life stage leading to its death. Azadirachtin is derived from the seeds of the neem tree. The product does not have a quick knock down and kill of insects. The product has some local systemic properties (the chemical is taken into the plant tissue). Azadirachtin has a low mammalian toxicity and begins to degrade once it dries.

For more information or help with identification, contact Wizzie Brown, Texas A&M AgriLife Extension Service Program Specialist at 512.854.9600. Check out my blog at www.urban-ipm.blogspot.com

The information given herein is for educational purposes only. Reference to commercial products or trade names is made with the understanding that no discrimination is intended and no endorsement by Texas A&M AgriLife Extension Service or the Texas A&M AgriLife Research is implied.

Extension programs serve people of all ages regardless of race, color, religion, sex, national origin, age, disability, genetic information or veteran status.

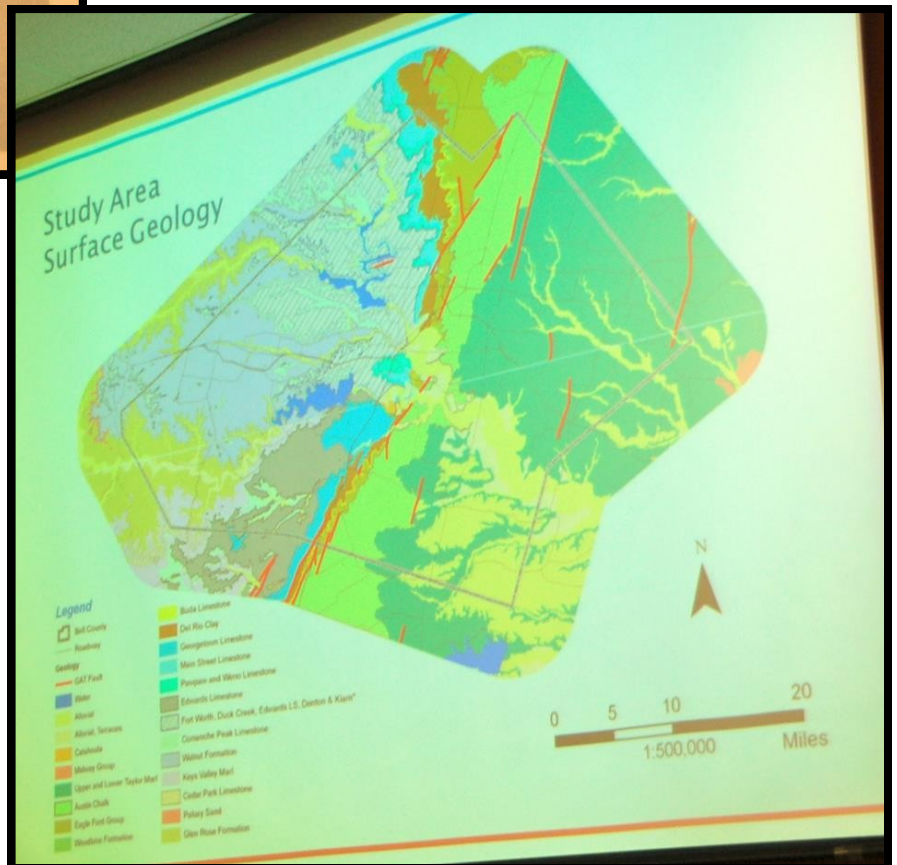
TEXAS A&M
AGRI LIFE
EXTENSION

MG's Participate in Bell County Water Symposium

- Randy Brown



Several BCMG's manned a booth at the November 18th Bell County Water Symposium hosted by the Clearwater Underground Water Conservation District. Clockwise from top right: Gary Slanga, Carla Harmon, Fran Sheppard, Gail Christian and Extension Agent, Heidi Prude speak with participants; Gail and Extension agent, Lyle Zoeller; the newly completed 3D model of Bell County Water Sources.



Continued on next page...

Water Symposium...continued

This map shows where Bell County water goes; below, Gail talks up the 2015 MG Conference; Gail, Carla, Gary and Don Wyatt busy giving out MG info.



CHRISTMAS

PARTY!

*The Bell County Master Gardener
Chisholm Trail Christmas Party is
here!!!*

December 4th at the
Expo Center, 6:00 p.m.

Dress is casual western/Christmas.

Catered by Johnny's Steaks and BBQ of
Salado.



Q & A

This month's question:

- Terrie Hahn

I bought this perennial at the Rose Emporium and had the marker in the ground. The marker is now MIA and I can't remember the name of this plant. It lasted through the summer heat and the freezes we've had. I'm pretty sure this plant goes to zone 5. I've seen quite a few pollinators on it. Does anyone know what this mystery plant is?



Announcements

New Class

- Peg Fleet

Remember, the new class starts January 7th and will take place on Wednesdays at 1 p.m. The schedule has been shortened, so interns will be required to complete 58 classroom hours and their homework assignments, as well as 50 service hours in order to be certified as MG's. Tell your friends!

BCMG Christmas Party

- Ilene Miller

Remember, the Bell County Master Gardener Chisholm Trail Christmas Party is on Thursday, December 4th. It is in the Special Events Room of the Bell County Expo Center and it begins at 6:00pm with dinner served at 6:30. Dress is casual western / Christmas. We want to thank all of the volunteers who are furnishing the wonderful salads and desserts to go with our barbecue dinner, catered by Johnny's Steaks and Barbecue of Salado.

November General Meeting

- Randy Brown

Randy Brown updates the group of about 60 Master Gardeners on the progress of the Killeen Municipal Court Community Gardens in November.



What's Happening in Your Yard

- Suzie Judd

Here's what is happening in my yard. Frost got to almost everything.



What's Happening in Your Yard

- Terrie Hahn

The deer don't usually bother with the whole pumpkins I put up front, I think because they can't get their mouths around it well enough to bite through. This year, we kept finding the pumpkin rolled across the driveway with little nips in the skin, and one day they managed to finally bite through. This doe had her whole head stuck in the pumpkin at one



point. Then another doe came over and they pawed each other like cats do to see whose turn it was. The seeds and mash inside went first. It had been scraped the way you do when carving a pumpkin. The next day

it had been completely devoured by critters. Below: Cascade Roses are great mini roses on a mammoth bush which lasts a couple of weeks as cut flowers; and left: Mexican Mint Marigold with African Blue Basil. The Basil died with the first freeze, but the MMM is doing fine.



**CHECK OUT BCMGA FACEBOOK
PAGE! GO TO**

<https://www.facebook.com/BCMGA?ref=hl>

What's Happening in Your Yard

- Melinda Woods Arriola

Cabbage, beets and Collard Greens from my garden!



Officers

President	Gary Slanga
First Vice President	Randy Brown
Second Vice President	Bernie Hurta
Recording Secretary	Pat Smith
Corresponding Secretary	Pat Allen
Treasurer	Gail Christian

Directors

Youth Programs	Mary Ann Everett
New Class	Fran Sheppard
Landscape	Carla Harmon Walter Ponder
KMCCG	Edie Campbell
Outreach	Susan Terry
Awards	Bernie Hurta
Webmaster	Louann Hight
State Conference	Gary Slanga
AgriLife Agent	Lyle Zoeller

Contributing Writers and Photographers:

Gary Slanga
Wizzie Brown
Randy Brown
Peg Fleet
Suzie Judd
Ilene Miller
Melinda Woods Arriola
Diane Calderwood
Terrie Hahn

Editor:

Terrie Hahn

Proofreader:

Werner Hahn

*Please submit articles for the Blooming Bell as Word Documents with **photos separate as JPG files** to Terrie Hahn at:*

moompie45@hotmail.com

Please do not send PDF documents.



A publication of the Bell County Master Gardener Association sponsored by Texas AgriLife Extension of Texas A & M University

1605 N. Main St.
Belton, Texas 76513
(254) 933-5305



TEXAS A&M
AGRI LIFE
EXTENSION