

Hardy Bastrop Pollinator Plants

**Pollinator Plants Tough Enough for
Bastrop's Summers *and* Winters**

General Care and Cultivation

These are useful landscape elements to complement cacti and succulents. Texas A&M considers them “high” to “very high” in heat Tolerance. All are Texas Natives or SuperStars®.

When watering, water deeply and allow soil to dry before watering again. Light, frequent watering will not produce a deep root system. Shallow root systems make the plant more vulnerable to disease, drought, and frost damage.

Winter watering is rarely necessary. Plants generally go dormant in winter; watering creates rot risk.

Ageratina havanensis

(White Mistflower)

- Texas Native
- Hardy to 10° F
- Height 2–6 feet
- Width 3–6 feet
- Shrub/subshrub
- Performs best if severely cut back each winter
- Drought tolerant
- Tolerates dry soil
- Larval Host for Rawson's Metalmark



https://www.wildflower.org/plants/result.php?id_plant=agha4

Calephelis rawsoni

(Rawson's Metalmark)

If you see holes in the leaves of native plants, it's a good thing! Native butterflies are using it for a host. These plants and animals have coevolved over millennia to survive together.



<https://www.butterfliesandmoths.org/species/Calephelis-rawsoni>

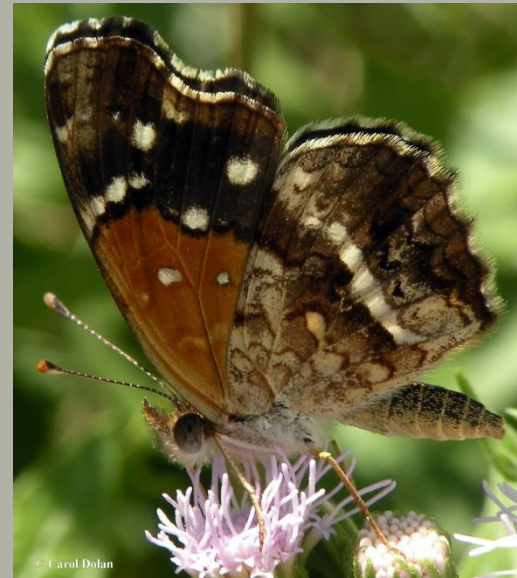
Anisacanthus quadrifidus var. Wrightii (Flame Acanthus)

- Texas Native
- Hardy to 0° F
- Height 3–4 feet
- Width 3–4 feet
- Perennial: Performs best if cut back near ground each winter.
- Drought tolerant
- Heat tolerant
- Larval host for Texan Crescent



https://www.wildflower.org/plants/result.php?id_plant=ANQUW

Anthanassa texana (Texan Crescent)



<https://www.butterfliesandmoths.org/species/Anthanassa-texana>

Bothriochloa laguroides ssp. Torreyana (Silver Beard Grass)

- ◉ Bastrop Native
- ◉ Hardy to 0° F
- ◉ Height 3–6 feet
- ◉ Width 3–4 feet
- ◉ Perennial grass
- ◉ Drought tolerant
- ◉ Heat tolerant
- ◉ Larval host for Skippers and Satyrs



https://www.wildflower.org/plants/result.php?id_plant=BOLAT

Bouteloua curtipendula

(Sideoats Grama)

- **Bastrop Native**
- Hardy to -20° F
- Height 1–3 feet
- Width 1–3 feet
- Perennial grass
- Drought tolerant
- Heat tolerant
- Larval host for Green Skipper, Dotted Skipper, others



https://www.wildflower.org/plants/result.php?id_plant=BOLAT

Hesperia viridis (Green Skipper)



<https://www.butterfliesandmoths.org/species/Hesperia-viridis>

Hesperia attalus

(Dotted Skipper)



<https://www.butterfliesandmoths.org/species/Hesperia-attalus>

Caesalpinia pulcherrima (Pride of Barbados)

- Texas Superstar®
- Hardy to 15° F
- Height 5-8 feet
- Width 5-8 feet
- Root-hardy perennial in Bastrop
- Texas Superstar:
“Extremely drought tolerant.”
- Blooms in summer



<http://texassuperstar.com/plants/caesalpinia/index.html>

Chasmanthium latifolium

(Inland Sea Oats)

- **Bastrop Native**
- Hardy to -20° F
- Height 2–4 feet
- Width 2–4 feet
- Perennial grass
- Shade tolerant
- Heat tolerant in shade
- Larval host for Pepper & Salt Skipper, Bells Road Side Skipper, Bronzed Roadside Skipper butterflies.



https://www.wildflower.org/plants/result.php?id_plant=CHLA5

Amblyscirtes hegon (Pepper and Salt Skipper)



<https://www.butterfliesandmoths.org/species/Amblyscirtes-hegon>

Amblyscirtes aenus (Bronze Roadside-Skipper)



<https://www.butterfliesandmoths.org/species/Amblyscirtes-aenus>

Conoclinium coelestinum (Blue Mistflower)

- **Bastrop Native**
- Hardy to -20° F
- Height 3–4 feet
- Width: spreads easily
- Perennial
- Heat tolerant
- Low water use
- Late season nectar



https://www.wildflower.org/plants/result.php?id_plant=cocol3

Conoclinium greggii (Gregg's Mistflower)

- Texas Native
- Hardy to 0° F
- Height 1–2 feet
- Width: spreads easily
- Perennial
- Heat tolerant
- Low water use
- Late season nectar
- Larval host for Rawson's Metalmark



https://www.wildflower.org/plants/result.php?id_plant=COGR10

Engelmannia peristenia

(Engelmann's Daisy)

- Bastrop Native
- Hardy to -20° F
- Height 2 feet
- Width: 2–3 feet
- Perennial
- Heat tolerant
- Drought tolerant
- Nectar source



https://www.wildflower.org/plants/result.php?id_plant=ENPE4

Eysenhardtia texana

(Texas Kidneywood)

- ◉ **Bastrop Native**
- ◉ Hardy to 10° F
- ◉ Height 10 feet
- ◉ Width 8 feet
- ◉ Deciduous Shrub
- ◉ Heat Tolerant
- ◉ Drought tolerant
- ◉ Leaves have tangerine scent when crushed
- ◉ Nectar source
- ◉ Larval host for Southern Dogface Butterfly



https://www.wildflower.org/plants/result.php?id_plant=EYTE

Zerene cesonia (Southern Dogface)



<https://www.butterfliesandmoths.org/species/Zerene-cesonia>

Helianthus annuus (Common Sunflower)

- Bastrop Native
- Height 10 feet
- Width 8 feet
- Annual
- Heat Tolerant
- Drought tolerant
- Nectar source
- Larval host for Bordered Patch and Checkerspots
- Seeds popular with birds



https://www.wildflower.org/plants/result.php?id_plant=HEAN3

Chlosyne lacinia (Bordered Patch)



<https://www.butterfliesandmoths.org/species/Chlosyne-lacinia>

Chlosyne nycteis (Silvery Checkerspot)



<https://www.butterfliesandmoths.org/species/Chlosyne-nycteis>

Helianthus maximiliani

(Maximilian Sunflower)

- ◉ Bastrop Native
- ◉ Hardy to -20° F
- ◉ Height 3–10 feet
- ◉ Width 3–5 feet
- ◉ Perennial
- ◉ Heat Tolerant
- ◉ Soil moisture dry
- ◉ Nectar source
- ◉ Seeds popular with birds



Hesperaloe parviflora (Red Yucca)

- Texas Native
- Hardy to -20° F
- Height 5 feet
- Width 4–6 feet
- Evergreen Succulent
- Heat Tolerant
- Drought tolerant
- Nectar source: bees and hummingbirds
- Long blooming season



Lantana urticoides

(Texas Lantana)

- Texas Native
- Hardy to 10° F
- Height 2–3 feet
- Width 3–5 feet
- Perennial: prune near soil in winter
- Heat Tolerant
- Soil moisture dry
- Nectar source



Gulf Fritillary on Lantana

Malvaviscus arboreus var. Drummondii (Turkscap)

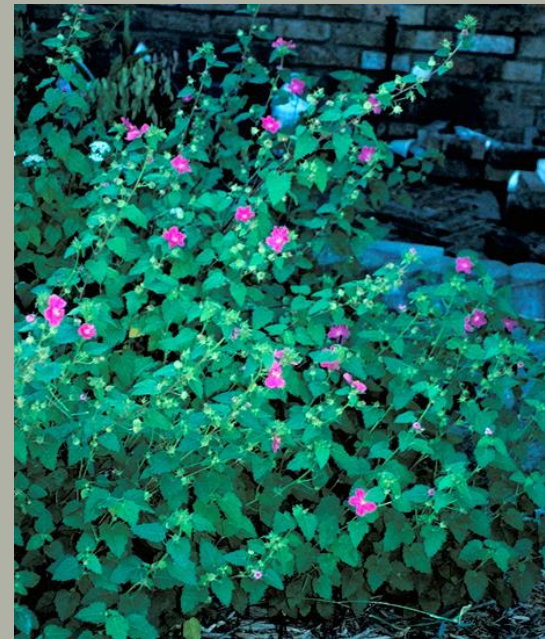
- ◉ **Bastrop Native**
- ◉ Hardy to -30° F
- ◉ Height 3–4 feet
- ◉ Width 3–5 feet
- ◉ Perennial shrub, but performs best cut near ground in winter.
- ◉ Drought tolerant
- ◉ Heat tolerant
- ◉ Prefers shade
- ◉ Nectar source, hummingbirds love it



Pavonia lasiopetala

(Rock Rose)

- Texas Native
- Hardy to 10° F
- Height 3–4 feet
- Width 3–4 feet
- Perennial shrub, but looks best with regular pruning
- Heat tolerant
- Drought tolerant
- Nectar source



Penstemon baccharifolius (Rock Penstemon)

- Texas Native
- Hardy to 10° F
- Height 1–2 feet
- Width 1–2 feet
- Perennial shrub, looks best with winter pruning
- Heat tolerant
- Drought tolerant
- Nectar source for hummingbirds



Phyla nodiflora

(Texas Frogfruit)

- **Bastrop Native**
- Hardy to 10° F
- Height 0–1 feet
- Width: spreads quickly, can become invasive
- Perennial
- Heat tolerant
- Drought tolerant
- Larval host for Phaon
Crescentspot, Buckeye, and
White Peacock butterflies



Phyciodes phaon (Phaon Crescent)



<https://www.butterfliesandmoths.org/species/Phyciodes-phaon>

Anartia jatrophae

(White Peacock)



<https://www.butterfliesandmoths.org/species/Anartia-jatrophae>

Salvia 'Mystic Spires'

(Mystic Blue Spires Sage)

- Texas Superstar®
- Root hardy to 0° F
- Height 2-3 feet
- Width 3-4 feet
- Perennial
- Heat Tolerant
- Low water use
- Attracts hummingbirds, bees, and butterflies
- Prune to within 12 inches of ground after blooming to maintain best performance.



<http://texassuperstar.com/plants/salviamysticspires/index.html>

Salvia farinacea 'Henry Duelberg'

(Henry Duelberg Salvia)

- Texas Native
- Texas Superstar®
- Root hardy to 0° F
- Height 3 feet
- Width 3 feet
- Perennial
- Heat Tolerance: High
- Deer resistant
- Augusta is white variant
- Attracts hummingbirds, bees, and butterflies
- Prune to within 6 inches of ground late winter to maintain best performance.



<https://texassuperstar.com/plants/salvia/index.html>

Sorghastrum nutans

(Indiangrass)

- **Bastrop Native**
- Hardy to -20° F
- Height 3–5 feet
- Width 2–3 feet
- Perennial grass
- Heat Tolerant
- Low water use
- Larval Host: Pepper-and-Salt Skipper butterfly.
- Low maintenance, but pruning back in late winter helps sunlight reach new spring growth.



Symphotrichum oblongifolium

(Fall Aster)

- **Bastrop Native**
- Hardy to -30° F
- Height 1–3 feet
- Width 1–3 feet
- Perennial
- Heat Tolerant
- Low water use
- Fall nectar source
- Prune in June for best performance.



Salvia greggii (Autumn Sage)

- Texas Native
- Root hardy to 10° F
- Height 3 feet
- Width 3–5 feet
- Subshrub: performs best if trimmed back 1/3 late winter and late summer
- Heat Tolerant
- Drought Tolerant
- Deer resistant



https://www.wildflower.org/plants/result.php?id_plant=sagr4

Tecoma stans

(Yellowbells, Esperanza)

- Texas Native
- Hardy to 10° F
- Height 3–5 feet
- Width 2–5 feet
- Perennial
- Heat Tolerant
- Drought tolerant
- Nectar source
- Blooms in summer



https://www.wildflower.org/plants/result.php?id_plant=test

Ungnadia speciosa (Mexican Buckeye)

- ◉ **Bastrop Native**
- ◉ Hardy to 10° F
- ◉ Height 15–20 feet
- ◉ Width 8–12 feet
- ◉ Deciduous tree
- ◉ Heat Tolerant
- ◉ Drought tolerant
- ◉ Nectar source
- ◉ Larval host: Henrys Elfin butterfly



Callophrys henrici

(Henry's Elfin)



<https://www.butterfliesandmoths.org/species/Callophrys-henrici>

Verbesina encelioides (Cowpen Daisy)

- ◉ Bastrop Native
- ◉ Not freeze hardy
- ◉ Height 2–3 feet
- ◉ Width 2–4 feet
- ◉ Annual
- ◉ Heat Tolerant
- ◉ Low water use
- ◉ Nectar source for bees and butterflies.



https://www.wildflower.org/plants/result.php?id_plant=VEEN

Viguiera dentata (Sunflower Goldeneye)

- Texas Native
- Hardy to 10° F
- Height 3–4 feet
- Width 4–4 feet
- Perennial
- Low water use
- Drought tolerant
- Likes part-shade
- Nectar source



https://www.wildflower.org/plants/result.php?id_plant=vide3

Vitex agnus-castus

(Texas Lilac)

- Texas Superstar®
- Hardy to 0° F
- Height 10–15 feet
- Width 10–15 feet
- Deciduous shrub or tree
- Heat tolerant
- Drought tolerant
- Nectar source

